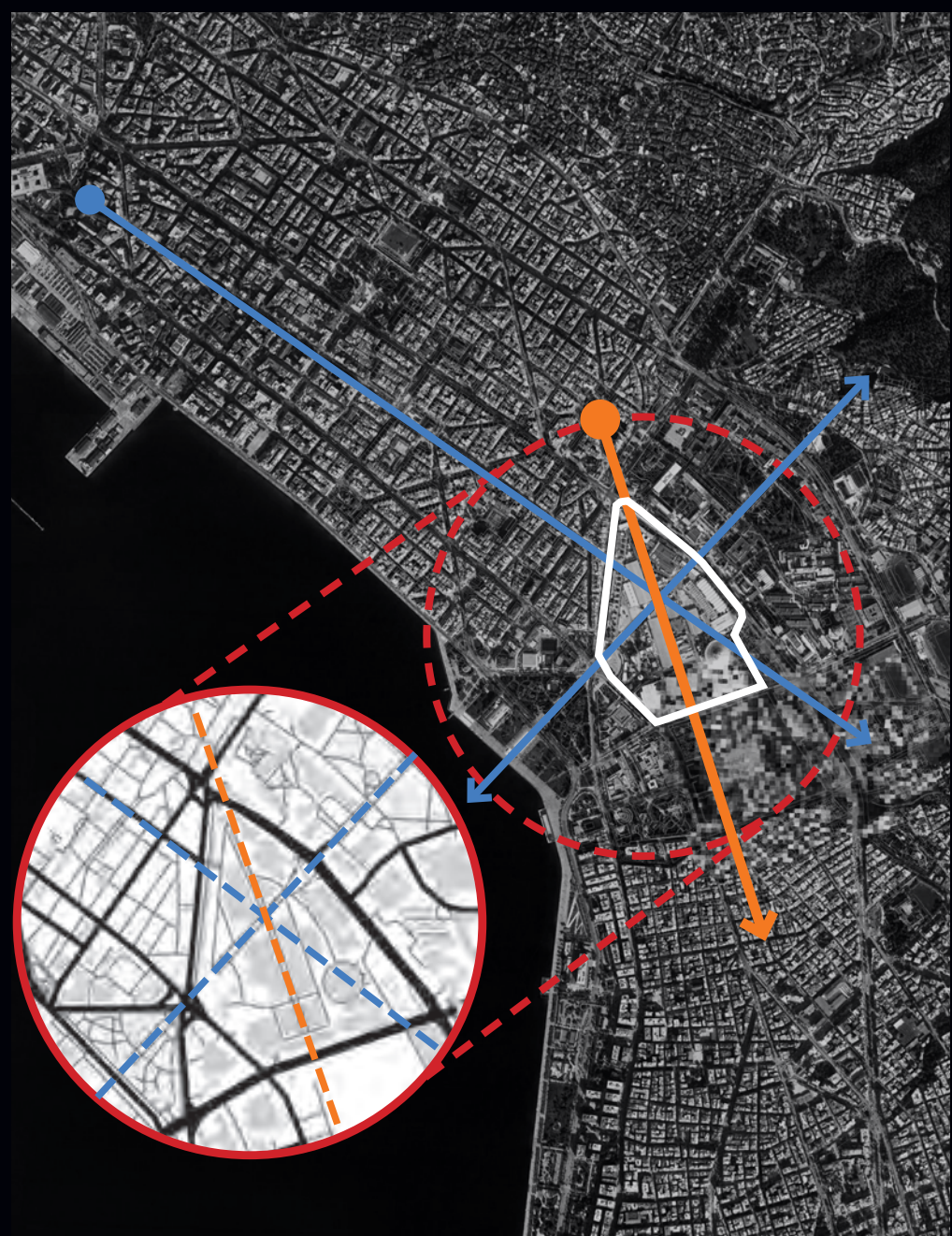




**Metamorphic Grid**  
An organising masterplan

Our proposal provides you with a flexible and adaptable masterplan that enables you as a client to make changes inside - interchanging buildings and public spaces as the project develops and the design evolves.



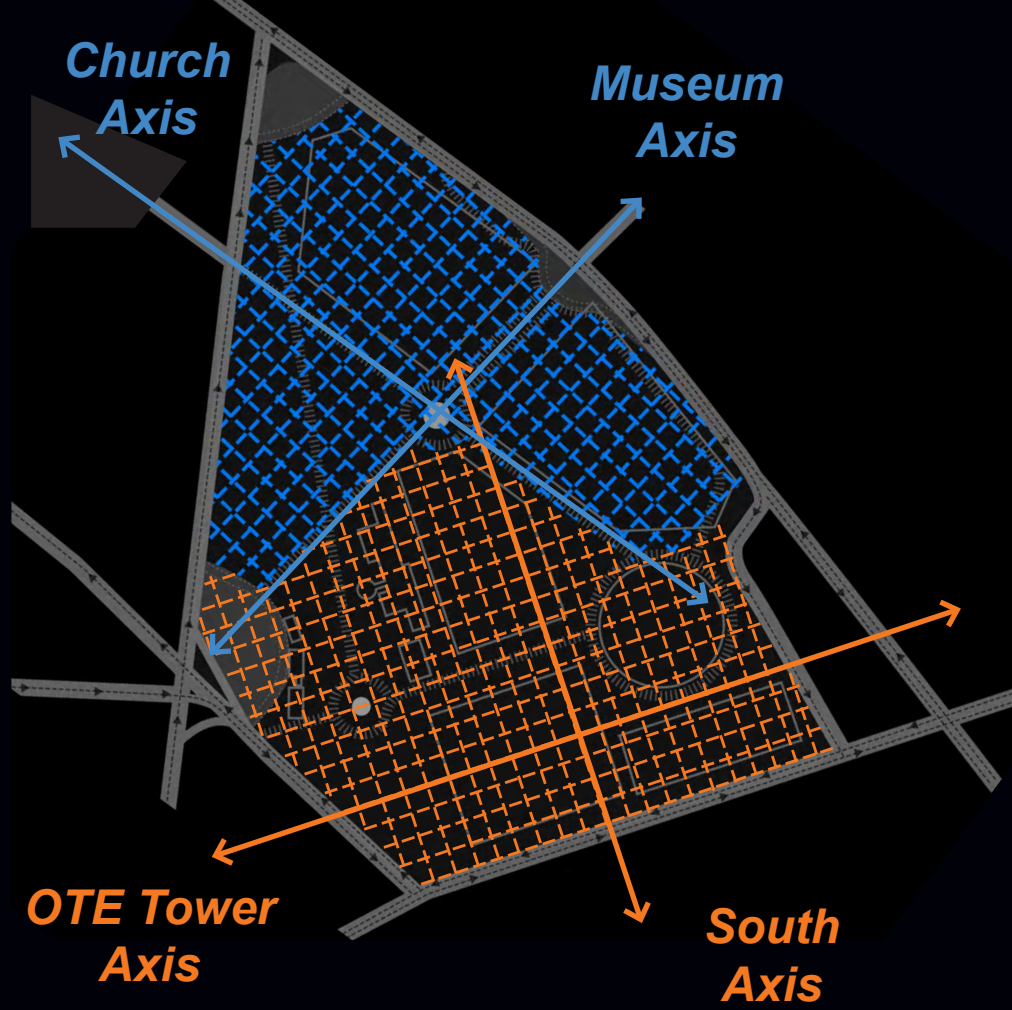
**Woven into its Context:**  
We have achieved this with an organising grid structure that links into the major axial routes of the city as well as aligning itself with two subgrids that sensitively respond to the geometry of the site and its existing buildings.



**A Living Grid**  
Creating a mosaic of Possibilities

A grid provides order but should also allow city life to thrive and develop. We have described this as a 'living grid'.

Visitors can occupy, personalise and enjoy a mosaic of different spaces. The Confexpark becomes not just an Exhibition area but a public hub for the city.



**Flexible and Adaptable:**

We have created a an efficient, flexible and adaptable structure that provides a framework to respond to the needs of your brief but that can be interchanged over time. In essence it's allowing for a metamorphosis of the site to reach its highest potential, which is why we have called the project a metamorphic grid.

Site Plan & Surrounding Area (1:1500)



Gardens – a mosaic of plant types and spaces

The gardens are about creating variety and vibrancy. We have provided a grid that allows the landscape to be broken down and fragmented into a mosaic of different types of spaces and 'rooms' - a patch work of gardens, with hard surfaces and soft surfaces. Some are intimate planted spaces, others more open with sea views.

There are dry spaces and lush spaces, olive groves and lavender gardens, places for people to sit and enjoy the park or for children to play. Some areas are quiet, for reflection, others more busy for events.

It is also about community engagement and allowing city residents to shape the character and appearance and activities of spaces.

The streets have tree lined routes helping to create outdoor exhibition spaces emphasizing the entrance experience as well as human scaled seating areas such as those in the commercial business district with awnings and indoor/outdoor facades and green roof terraces.

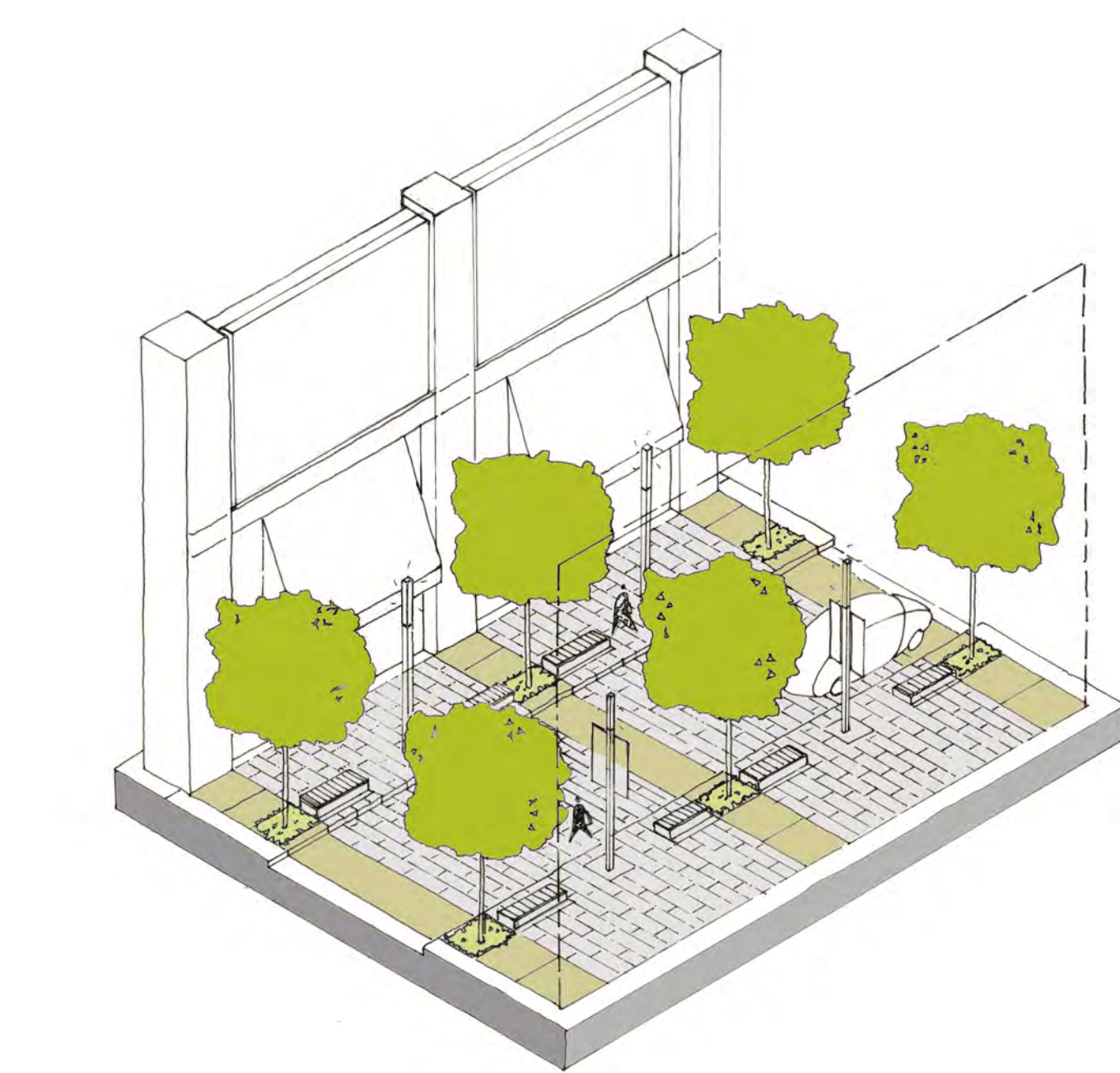
The reason for a fragmented garden is to allow for change and a variety of functions.

Creating Vibrant External Spaces



Biodiversity, planting indigenous flora to encourage local fauna

The streets have tree lined routes helping to create outdoor exhibition spaces emphasizing the entrance experience as well as human scaled seating areas such as those in the commercial business district with awnings and indoor/outdoor facades and green roof terraces.



Activated, naturally shaded streets



A variety of human-scaled spaces to enjoy



Height and Enclosure - Event Areas



Intimate, Sheltered Spaces





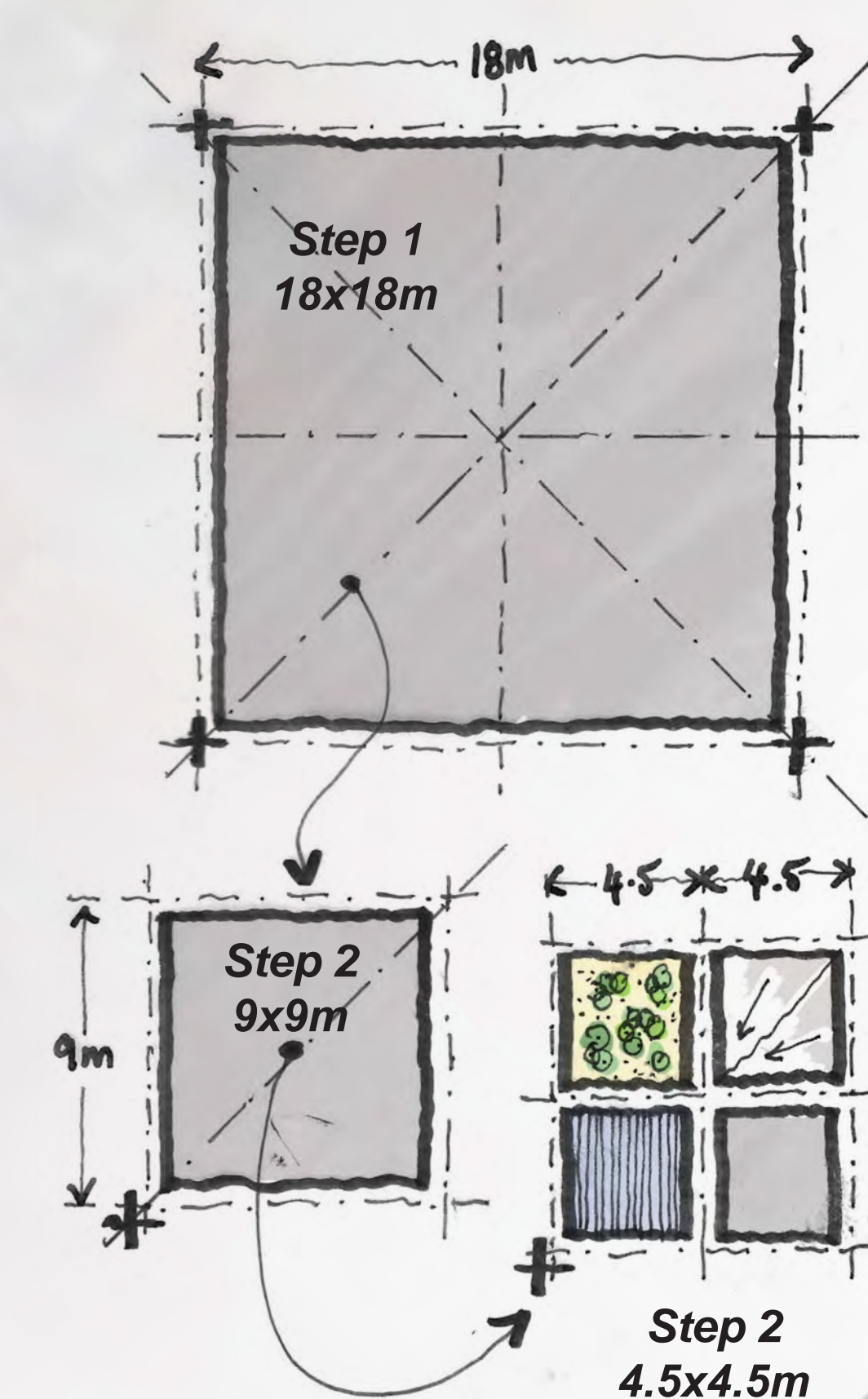


### Roofscape – elegant horizontal planes

The roofscape creates a series of horizontal planes out of characterful lightweight elements.

The roof areas comprise modular interchangeable elements that allow for natural light into the exhibition spaces, angled PV cells to generate energy and planted zones to encourage local wildlife habitats and diversity.

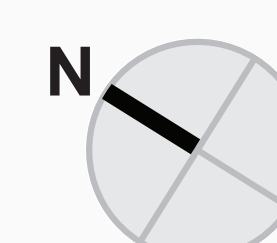
This also creates a series of striking roof planes that reflect the sunlight and sky throughout the day animating Heli Expo and giving it a strong presence and sense of place.



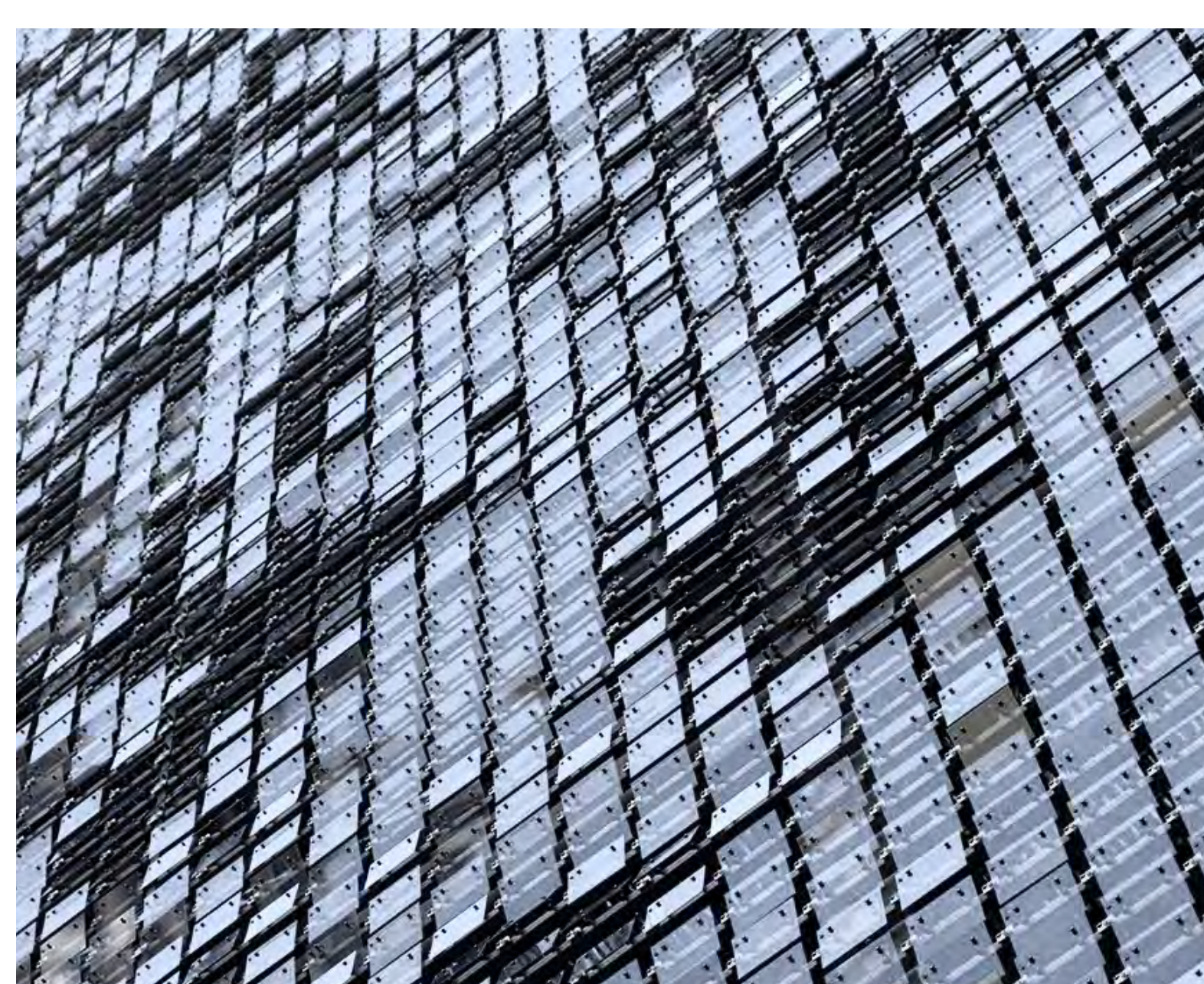
Grid Module Design Principle

1. The underlying Living Grid model is based on a structurally efficient 18x18m grid. This module is repeated across the site, connecting together to form large-span, structure-free spaces.

2. The grid module is further broken down. This subsequent sub-division creates mosaic framework of different spaces and places.



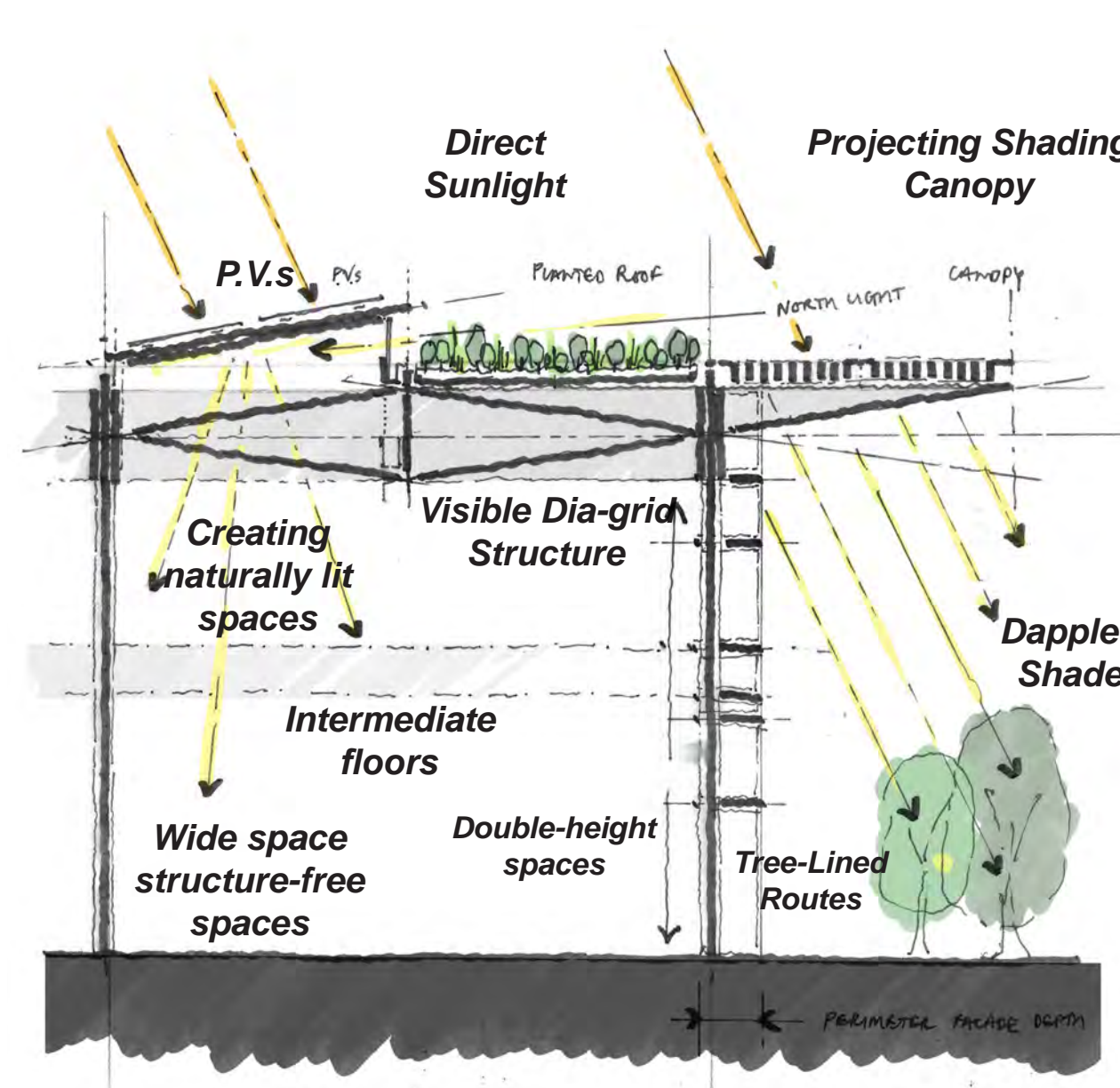
Roof Plan (1:500)



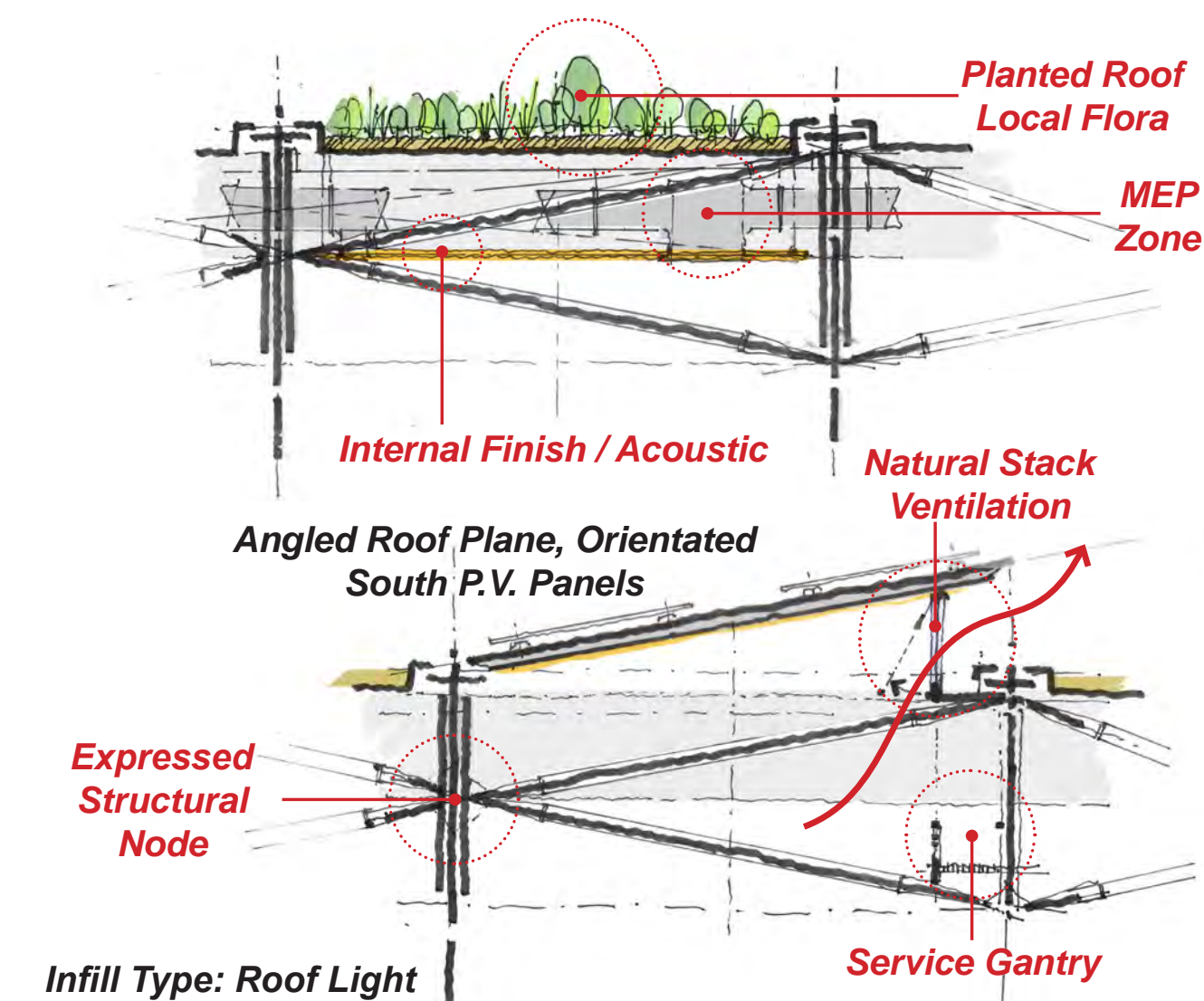
A shimmering roof plane



Dappled natural light animated the interior spaces



Canopy Section Concept

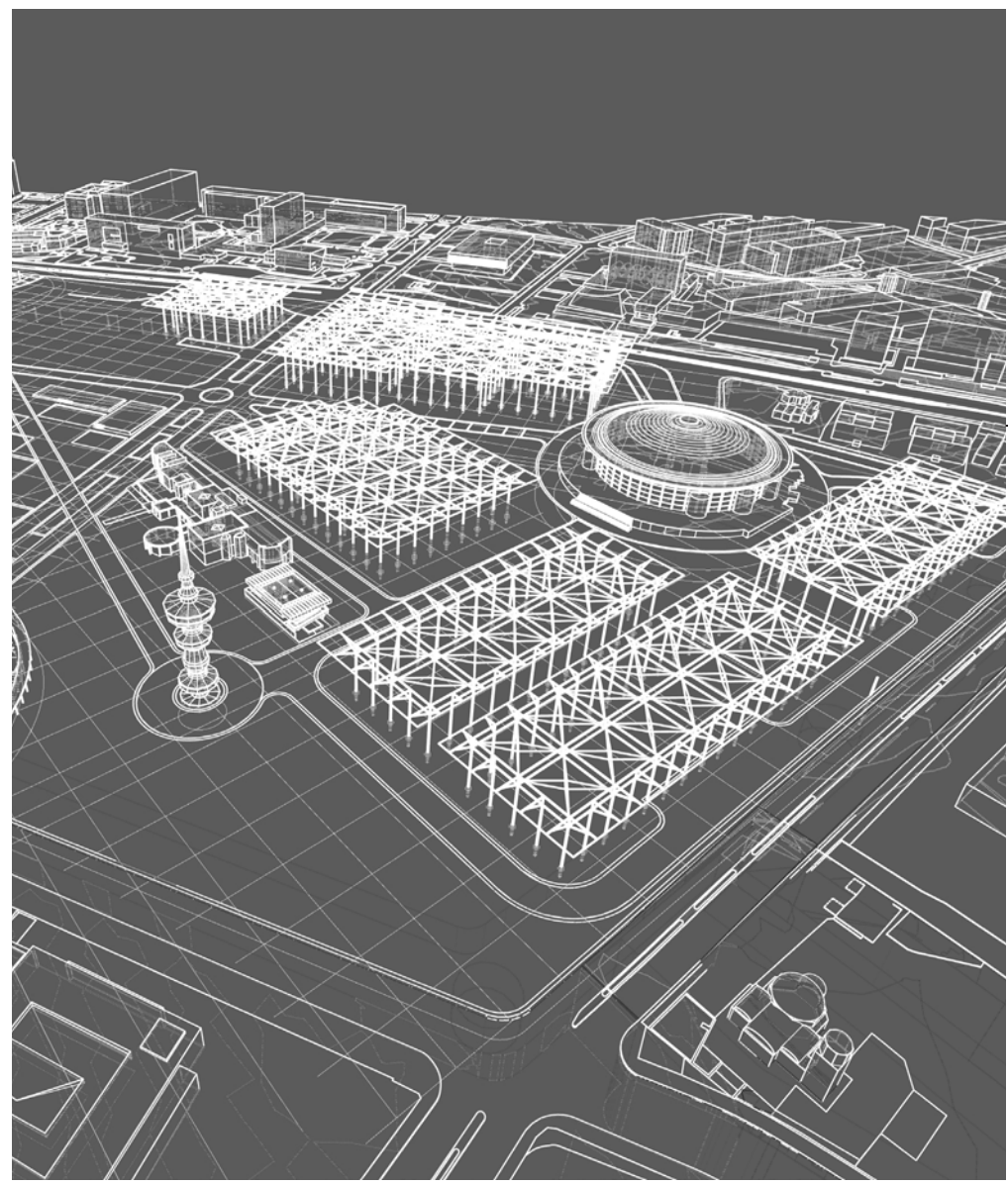


Infill Modules - Roof Activation



# The Layered Grid

This exploded axonometric illustrates how an organising grid allows for flexible and cost effective modular buildings that meet your budget requirements.



## An Efficient Structural Grid



## Interlinked Landscape



## A Permeable Landscape

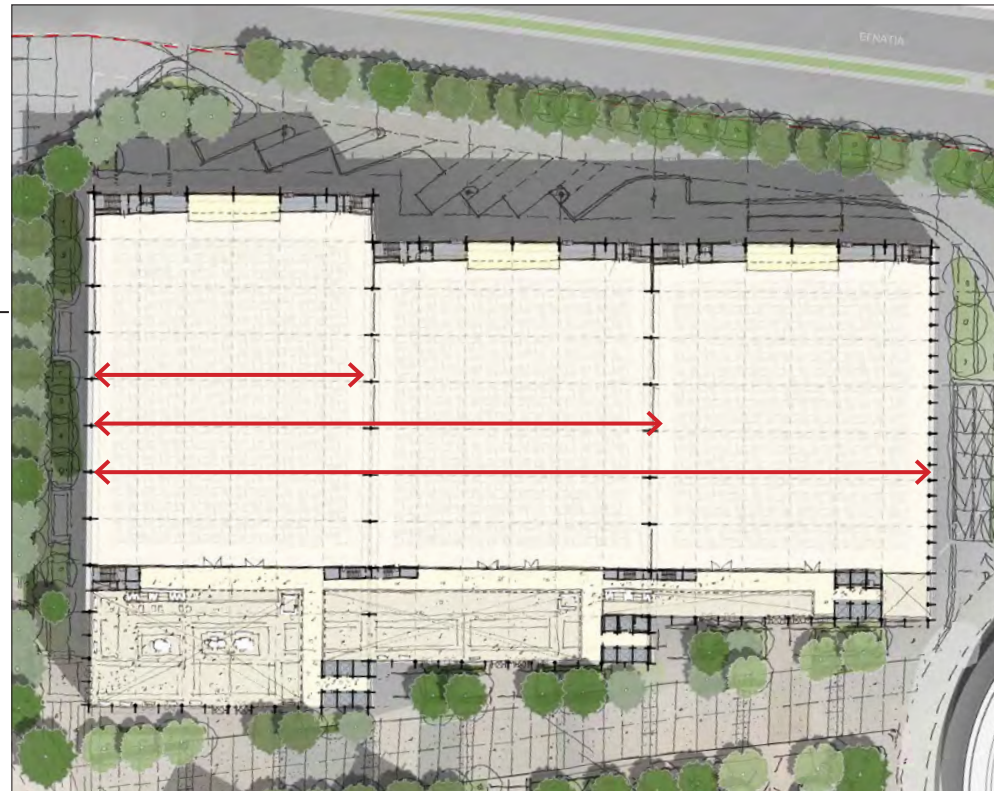
The edges of the site could be permeable to allow meandering routes through the landscape of the confex park.

Exhibition halls with moveable partitions light weight roof structure modular roof elements with angled PV cells and planted areas

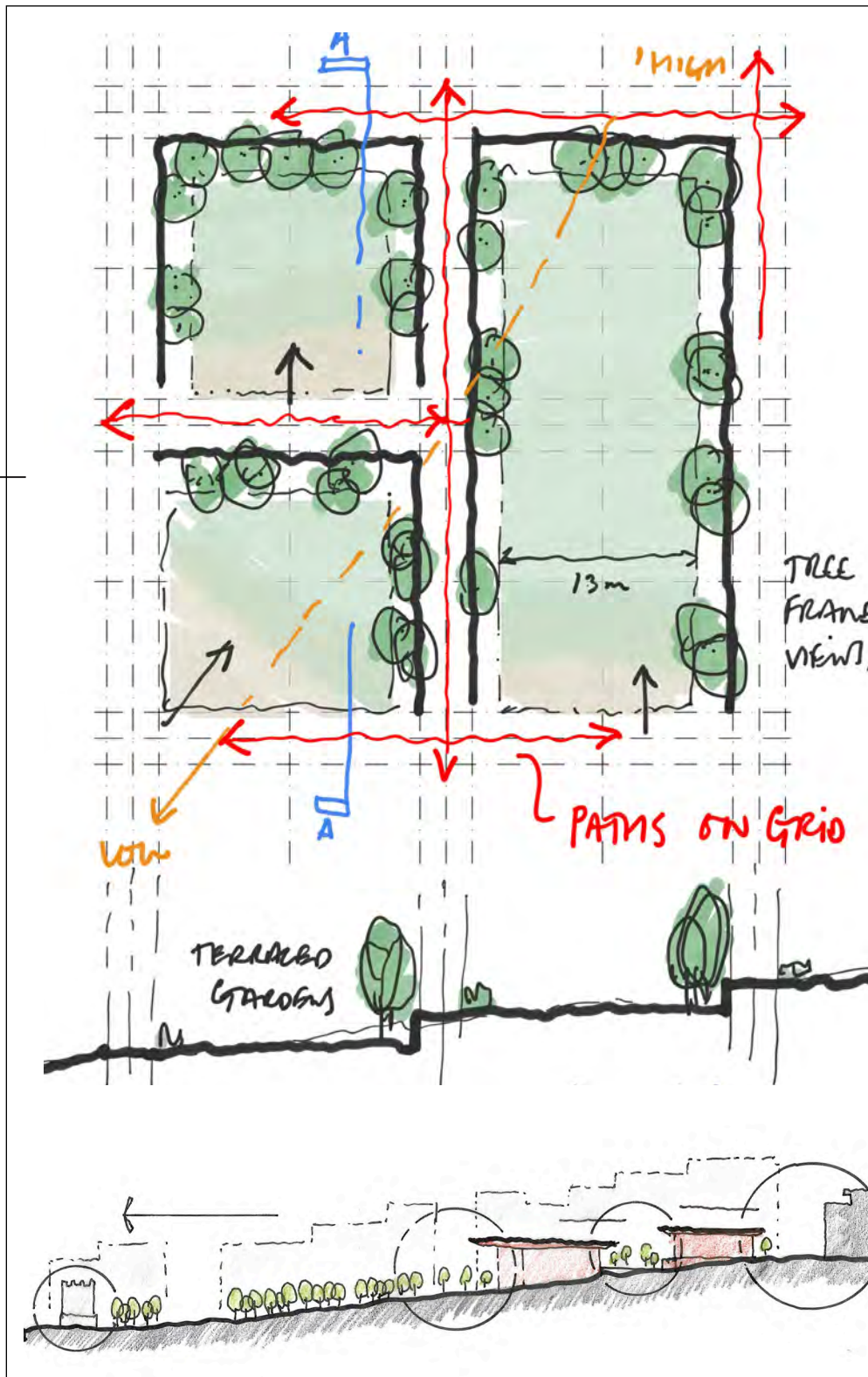
4



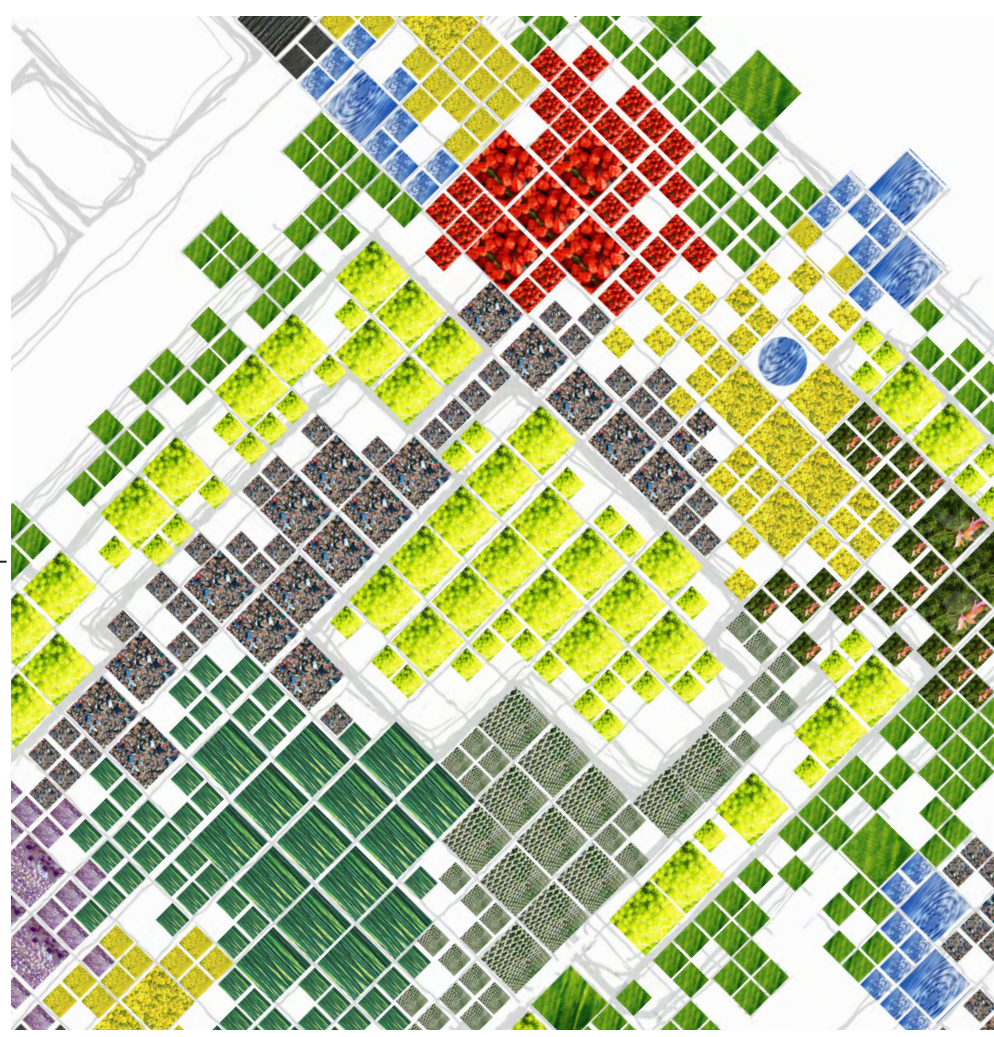
**Sustainable Green Roof**  
Some areas of the roof could be planted with different coloured shrubs improving biodiversity



## Flexible Hall Design



## The Fragmented Garden



**The Fragmented Garden**  
Fragmented Gardens with a patchwork of different trees and plants

Business district comprising hotels, halls, retail and offices

Event Garden

Recreational Garden



Tree-Lined Avenues

Creating Different Experiences

Contoured Approach

Extending the Living Grid into the Landscape

A mix of seclusion & open spaces

A Mosaic of Different Routes

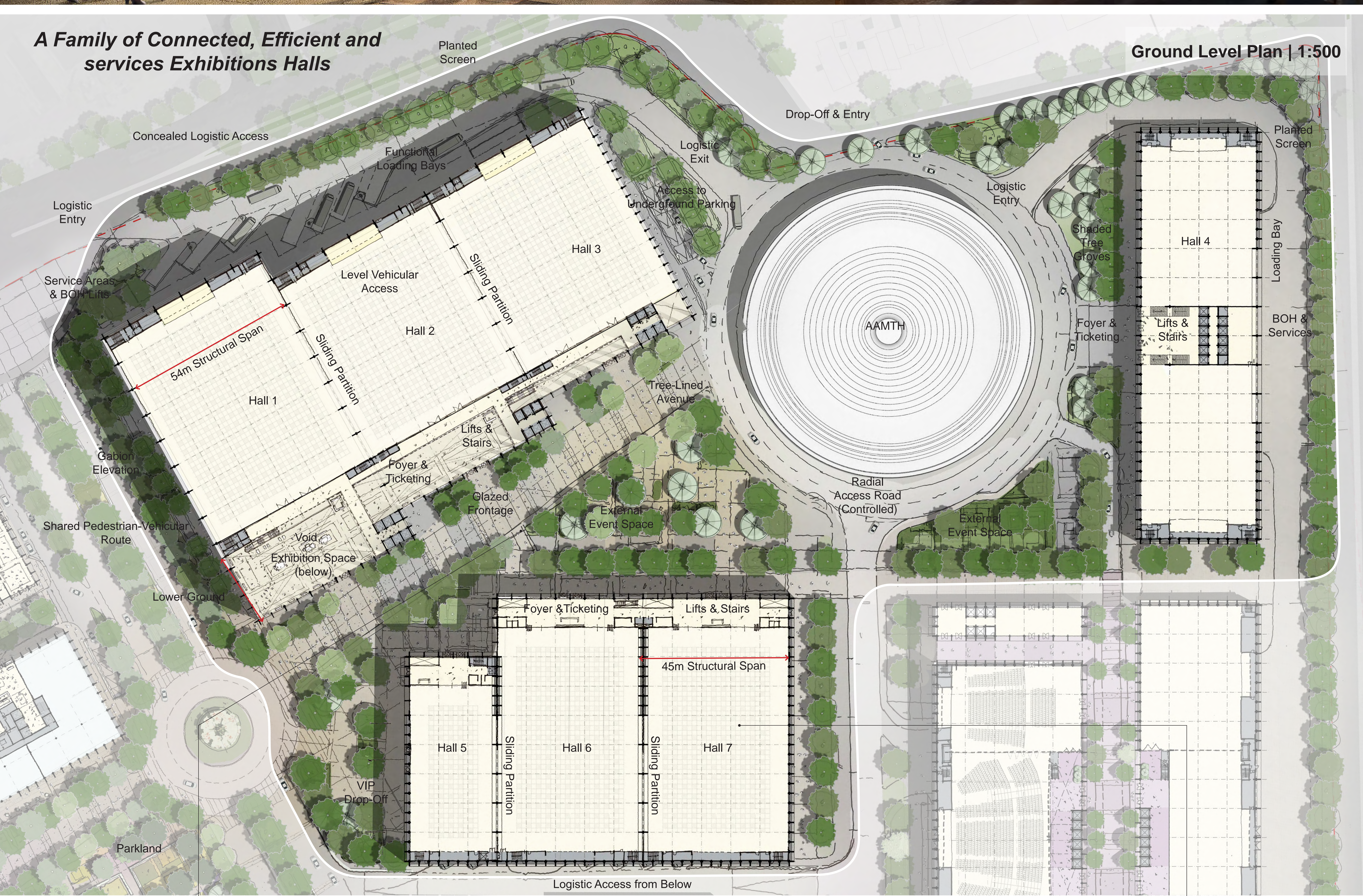
**View of the Parkland and Living Grid Landscape**





A Clear Sense of Arrival to the Exhibition Centre

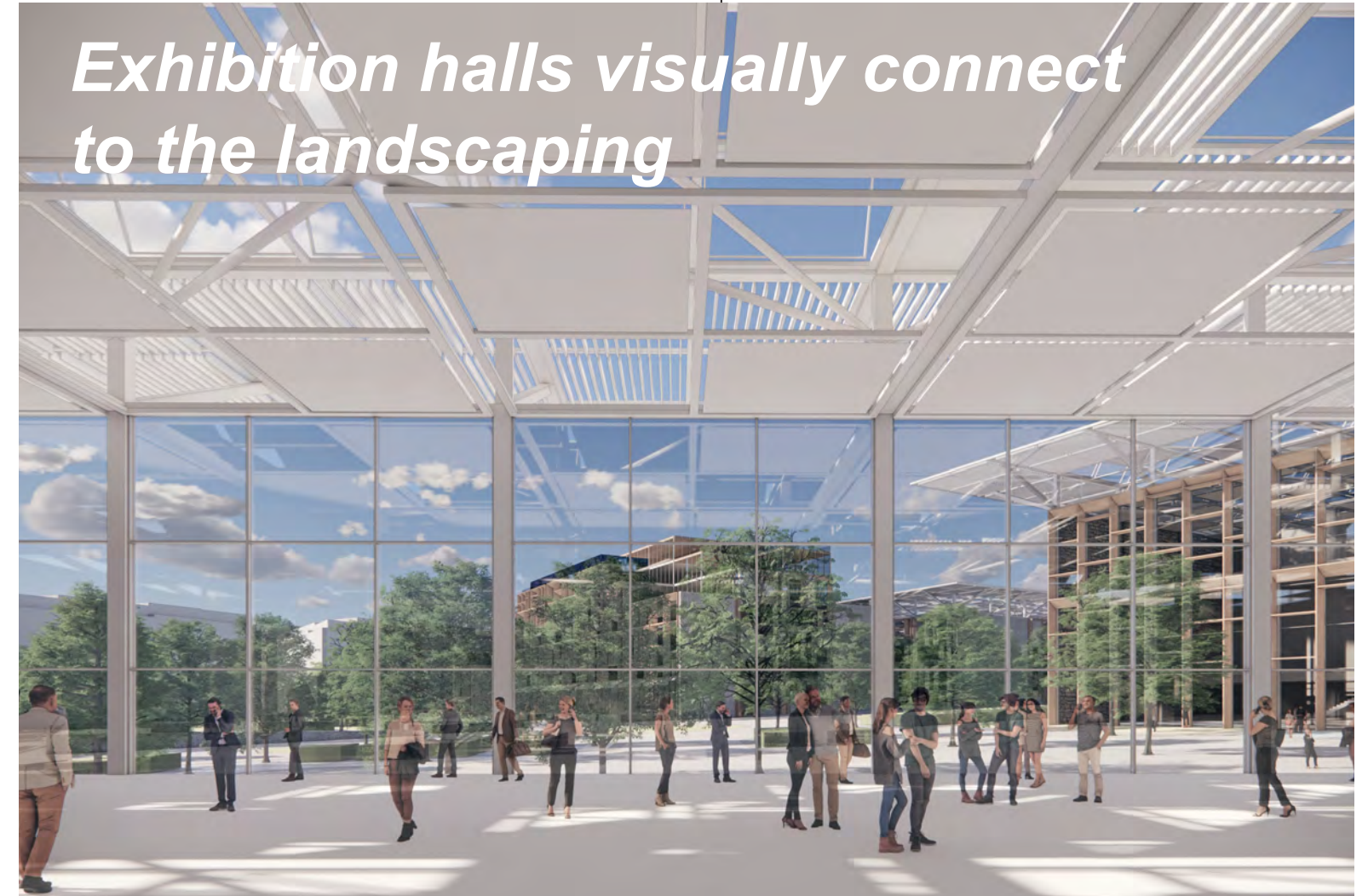
A family of efficient, flexible and modular Exhibition halls



Overhanging eaves create pleasant shaded routes



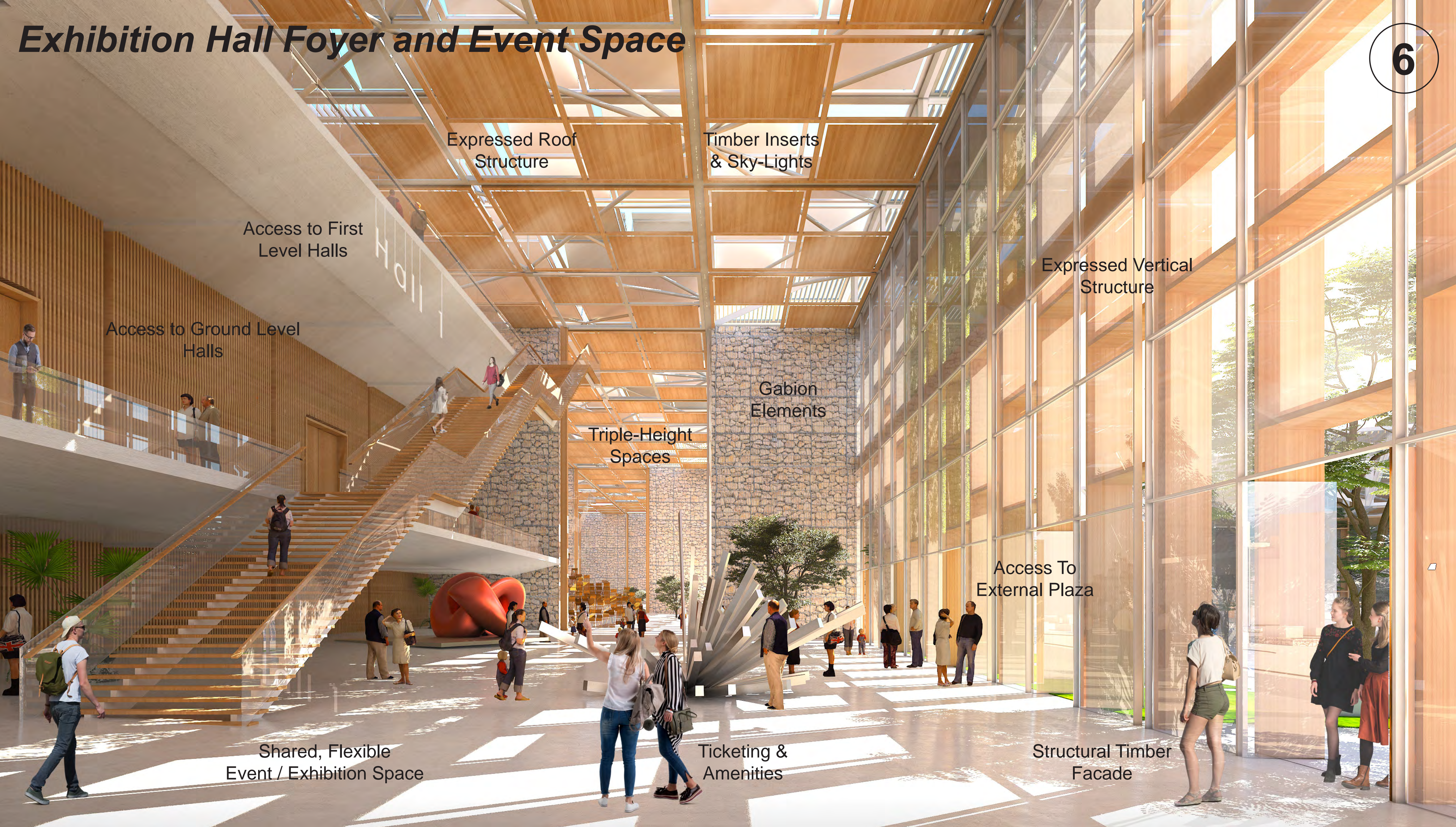
Site Cross-Section



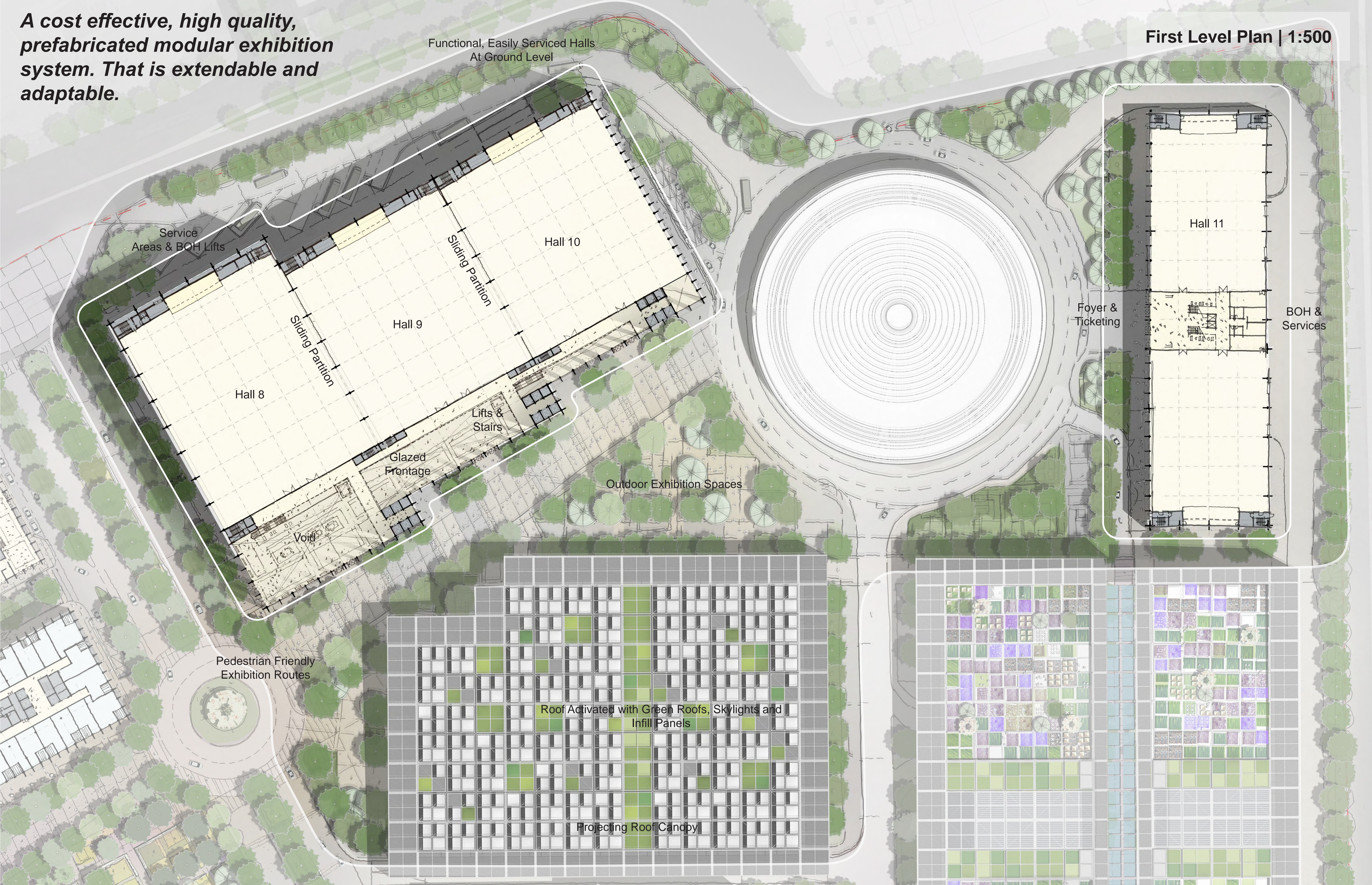
Exhibition halls visually connect to the landscaping



# Exhibition Hall Foyer and Event Space



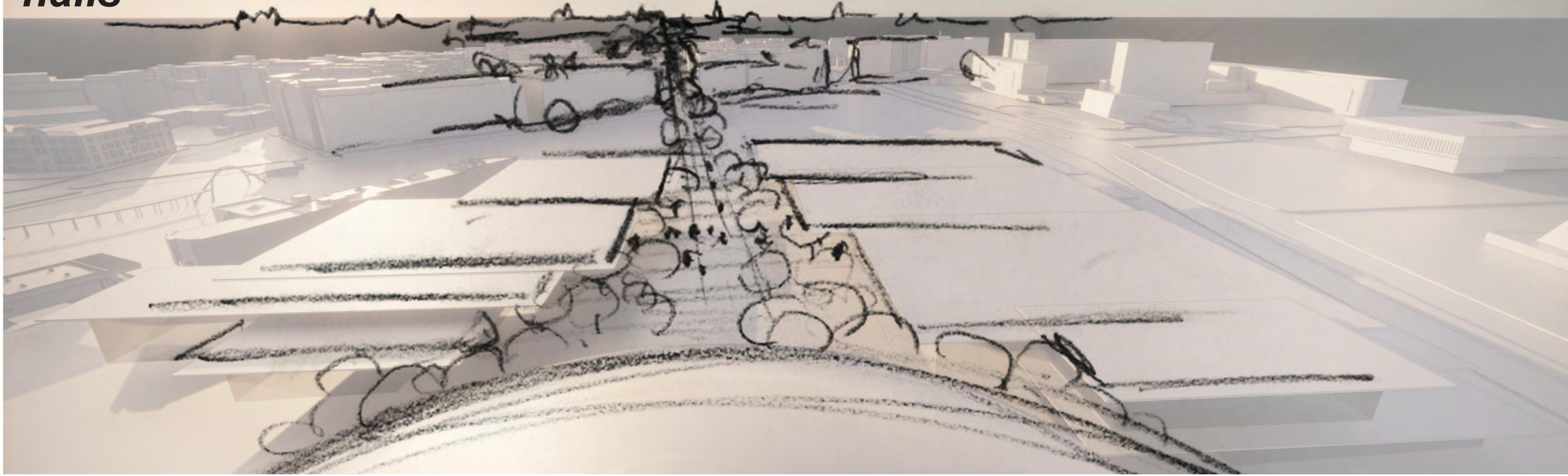
**A cost effective, high quality, prefabricated modular exhibition system. That is extendable and adaptable.**



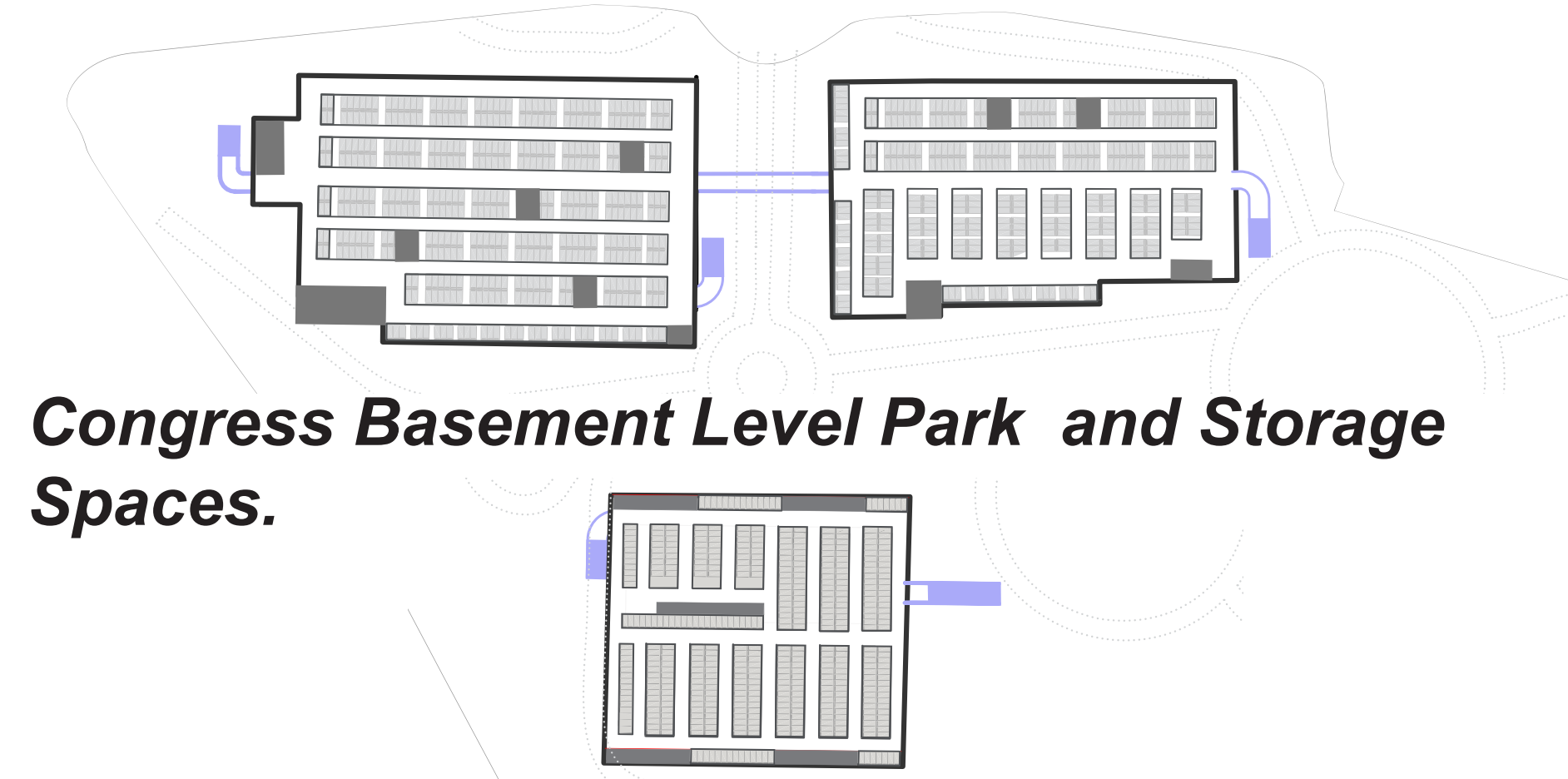
**Integrating Logistic Access to create highly serviceable spaces**



**A dramatic series of floating roof planes characterises the exhibition halls**



**Basement Level Park and Storage Spaces.**



**Congress Basement Level Park and Storage Spaces.**



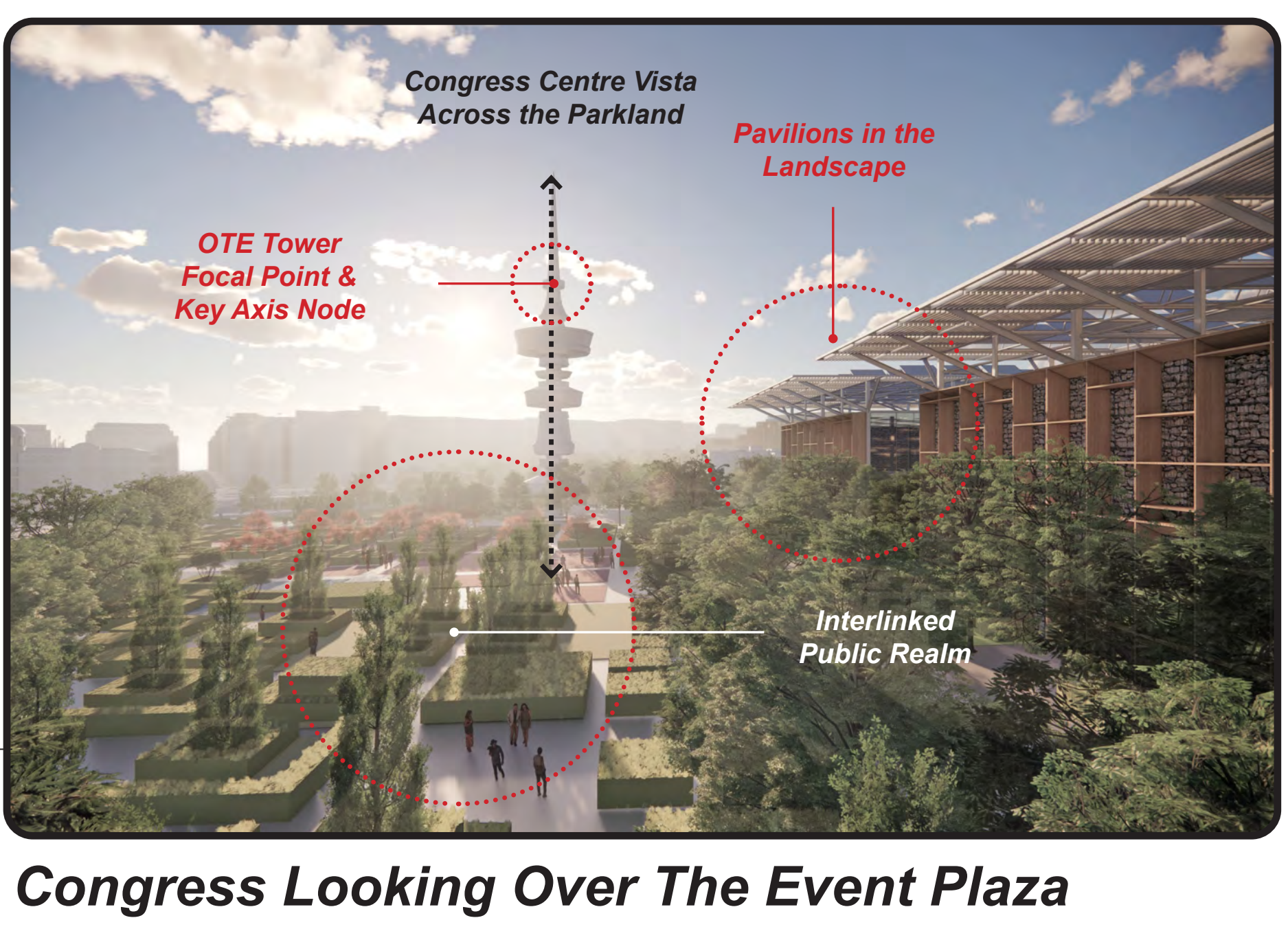
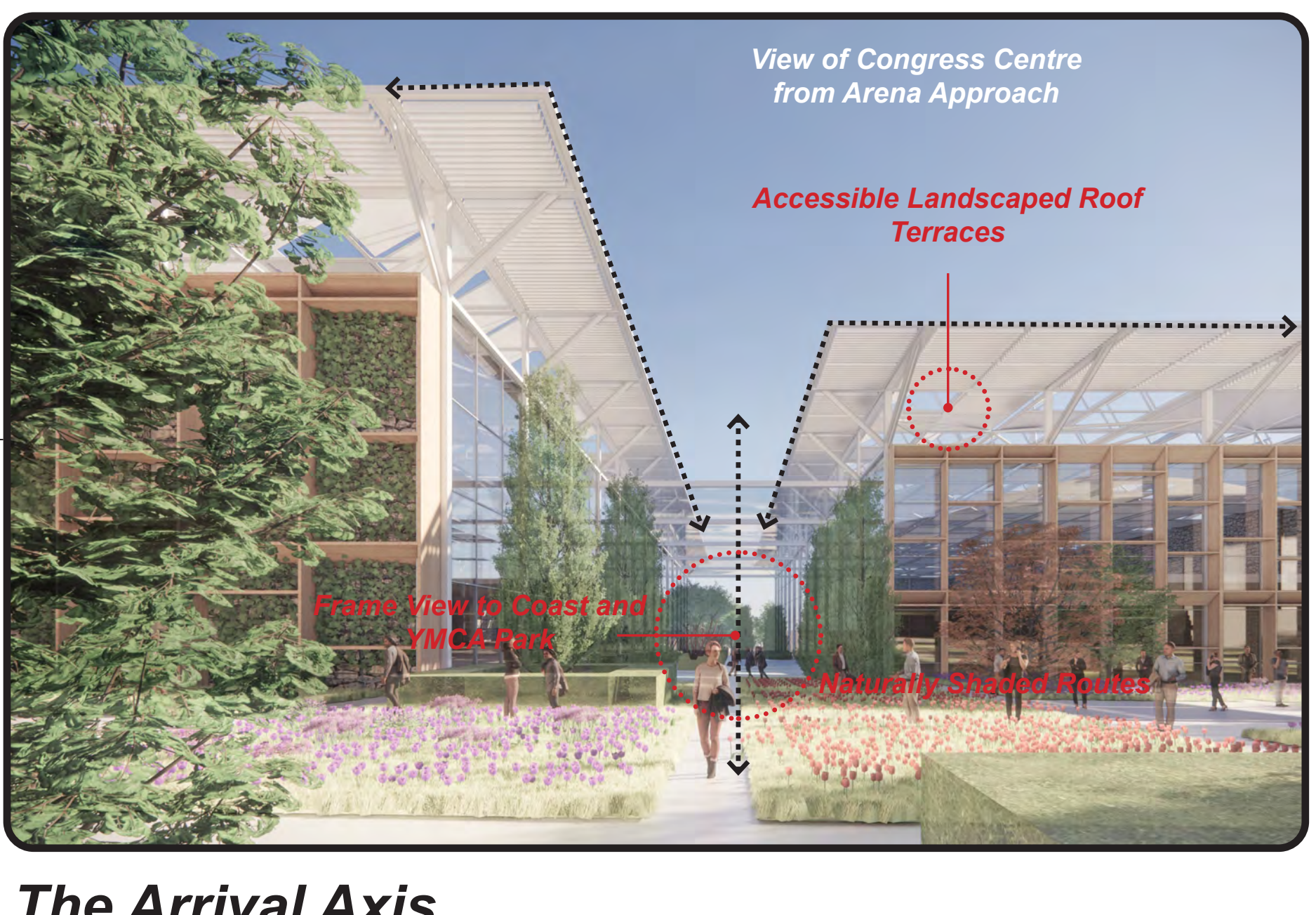
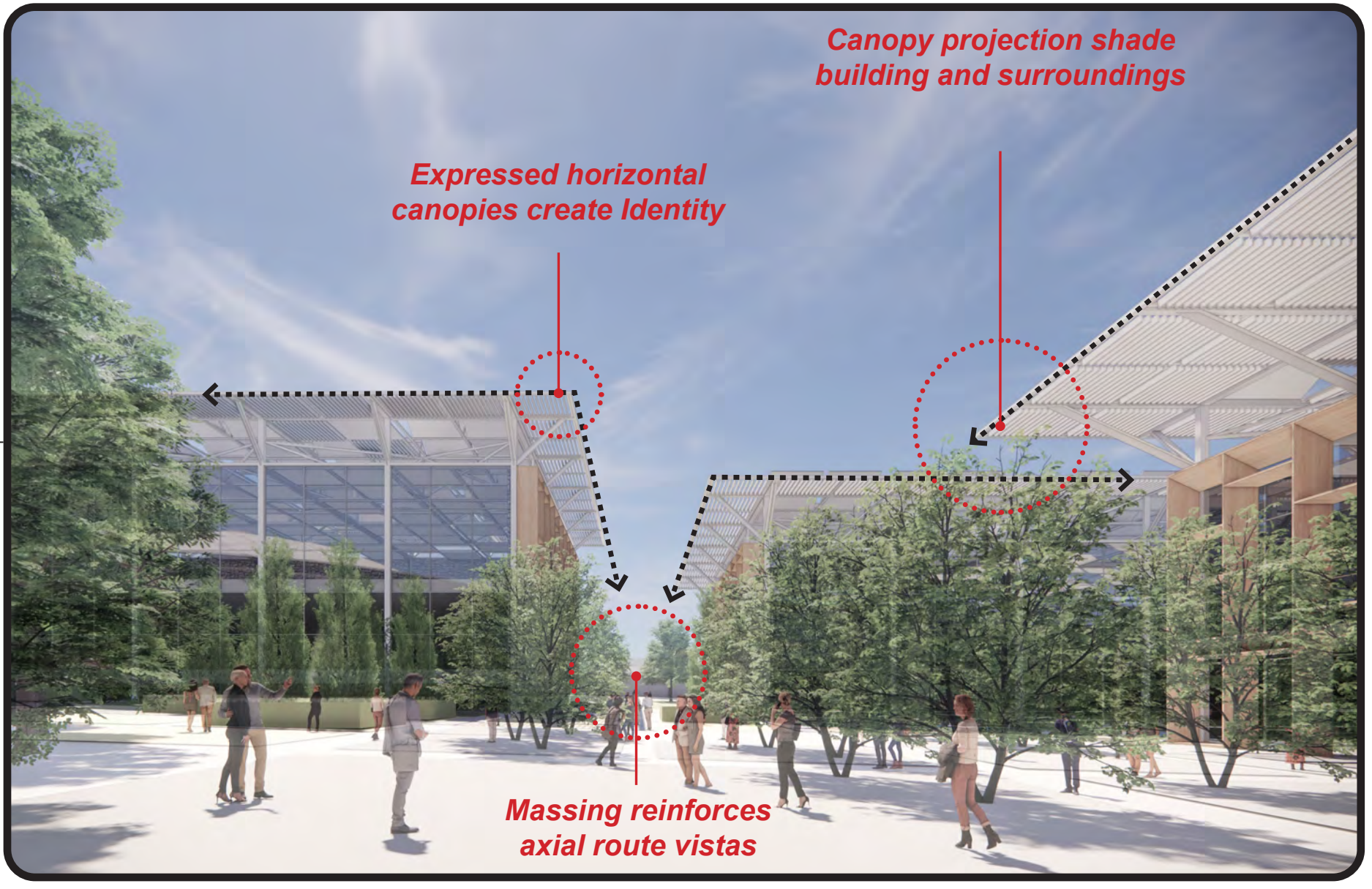
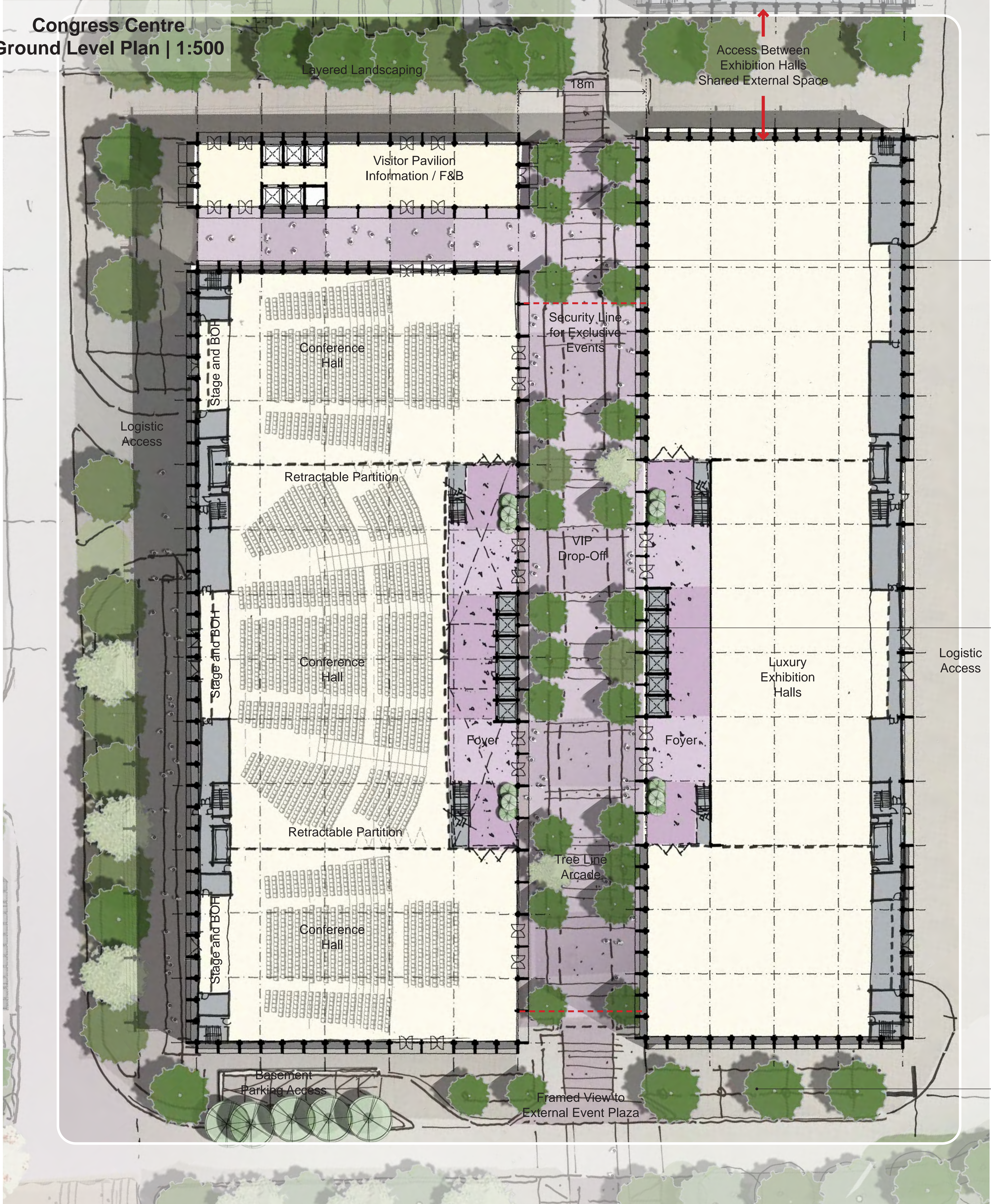
# The Congress Centre and VIP Exhibition Halls

A memorable family of structures with expressed horizontal canopies

Nestled into the sites Parkland

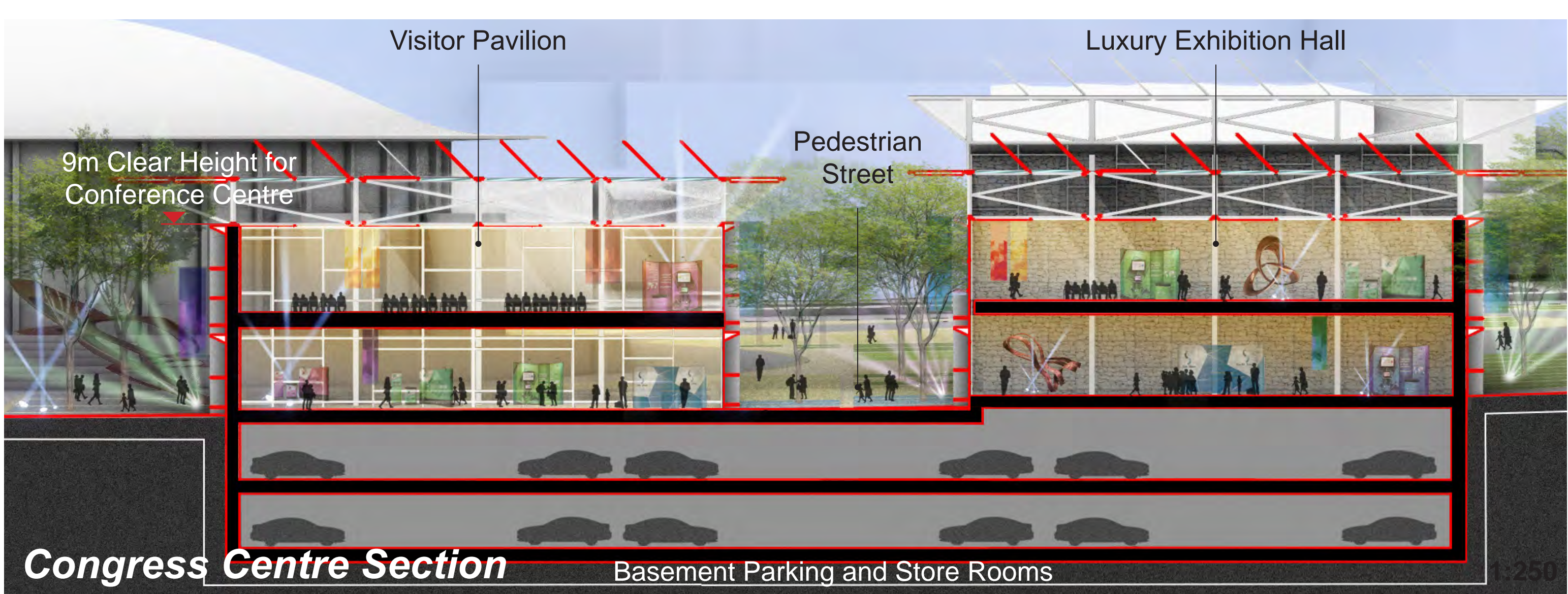
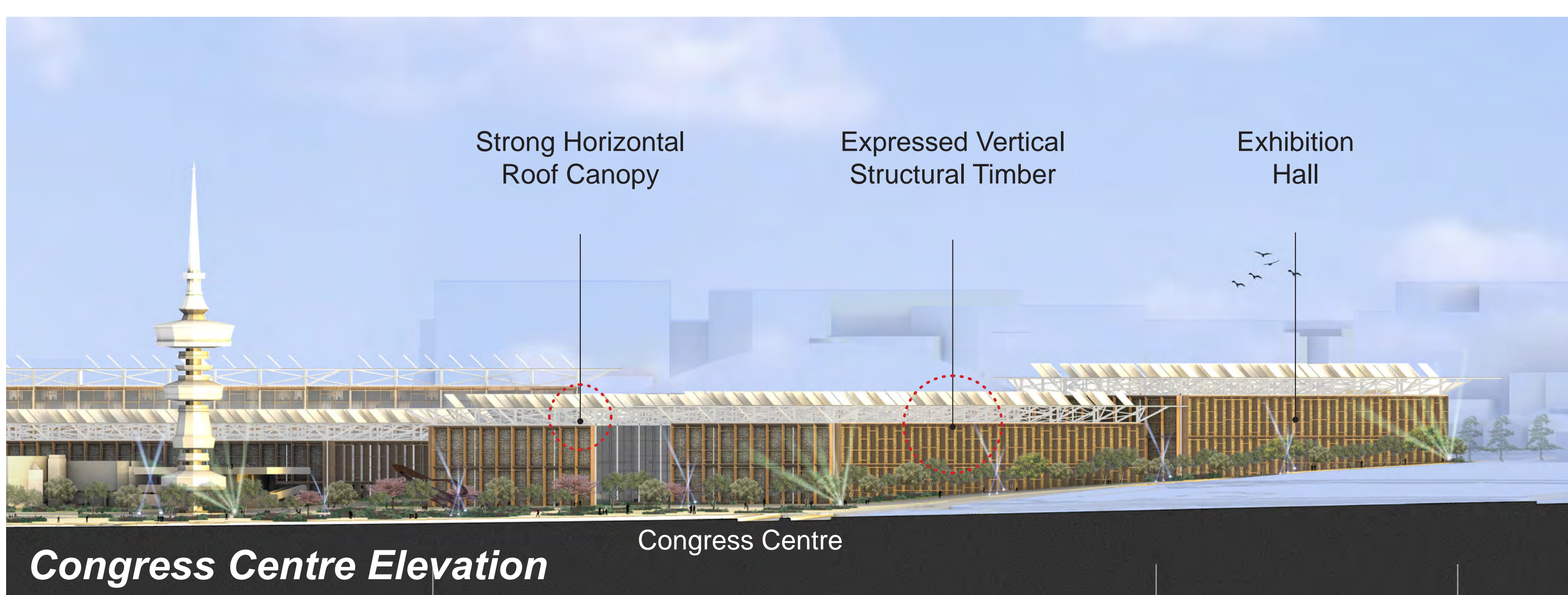
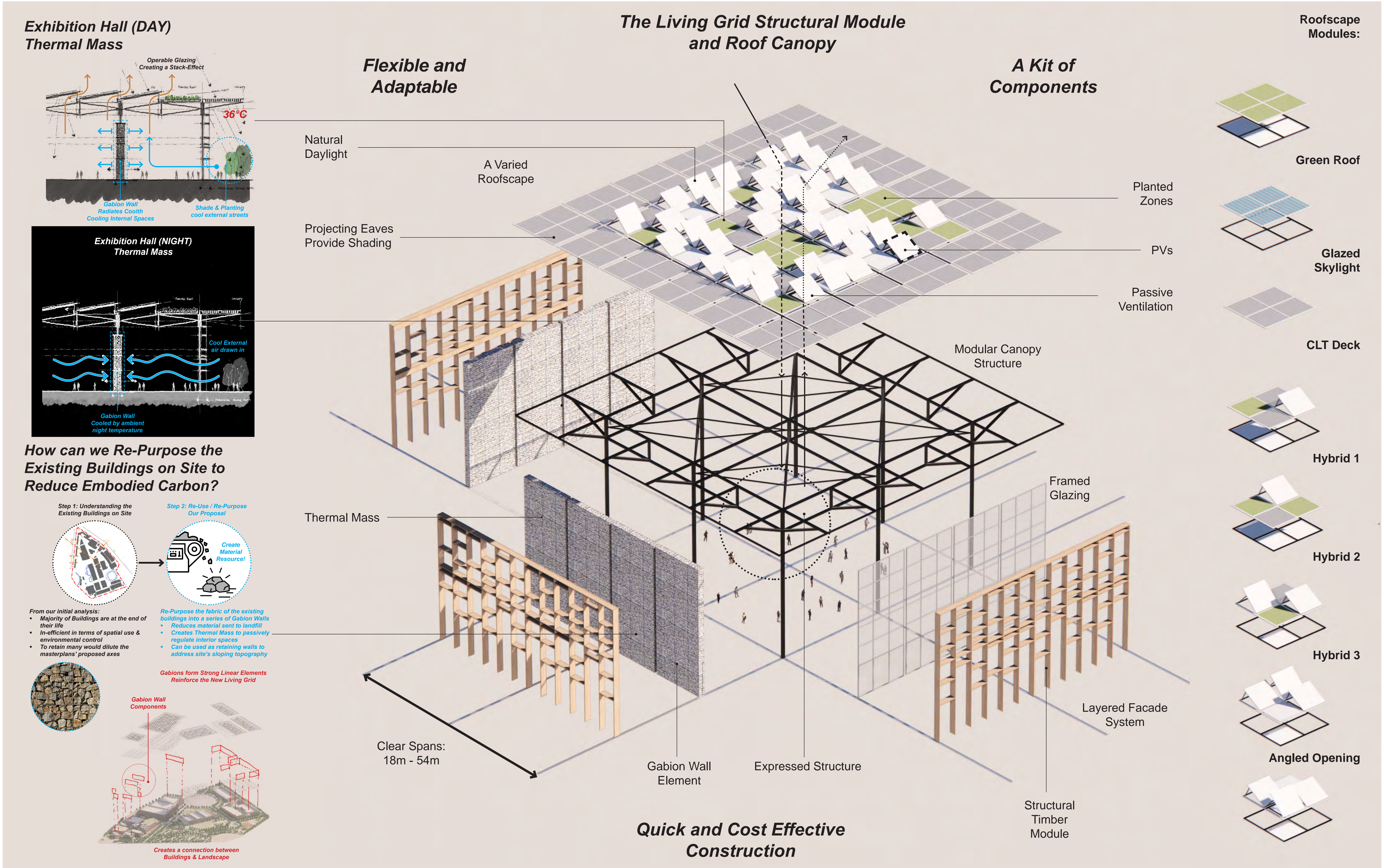
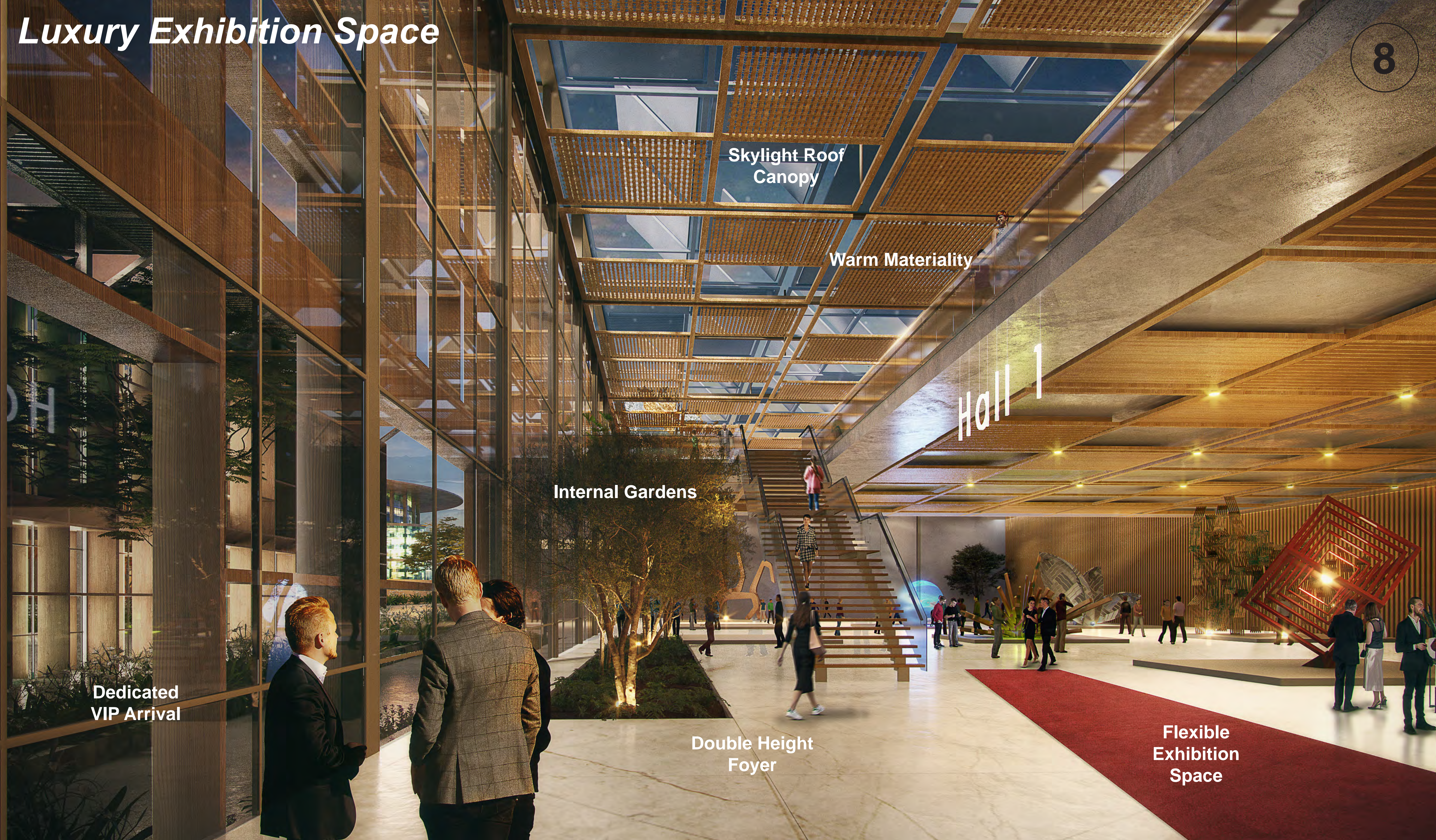
Buildings Merged with the Landscape

Overlapping Layered Roof Planes





# Luxury Exhibition Space







A vibrant, active district and threshold between Heli-Expo and the city



Activated Roofscape



Business Centre Courtyard



Deep Shading Facade

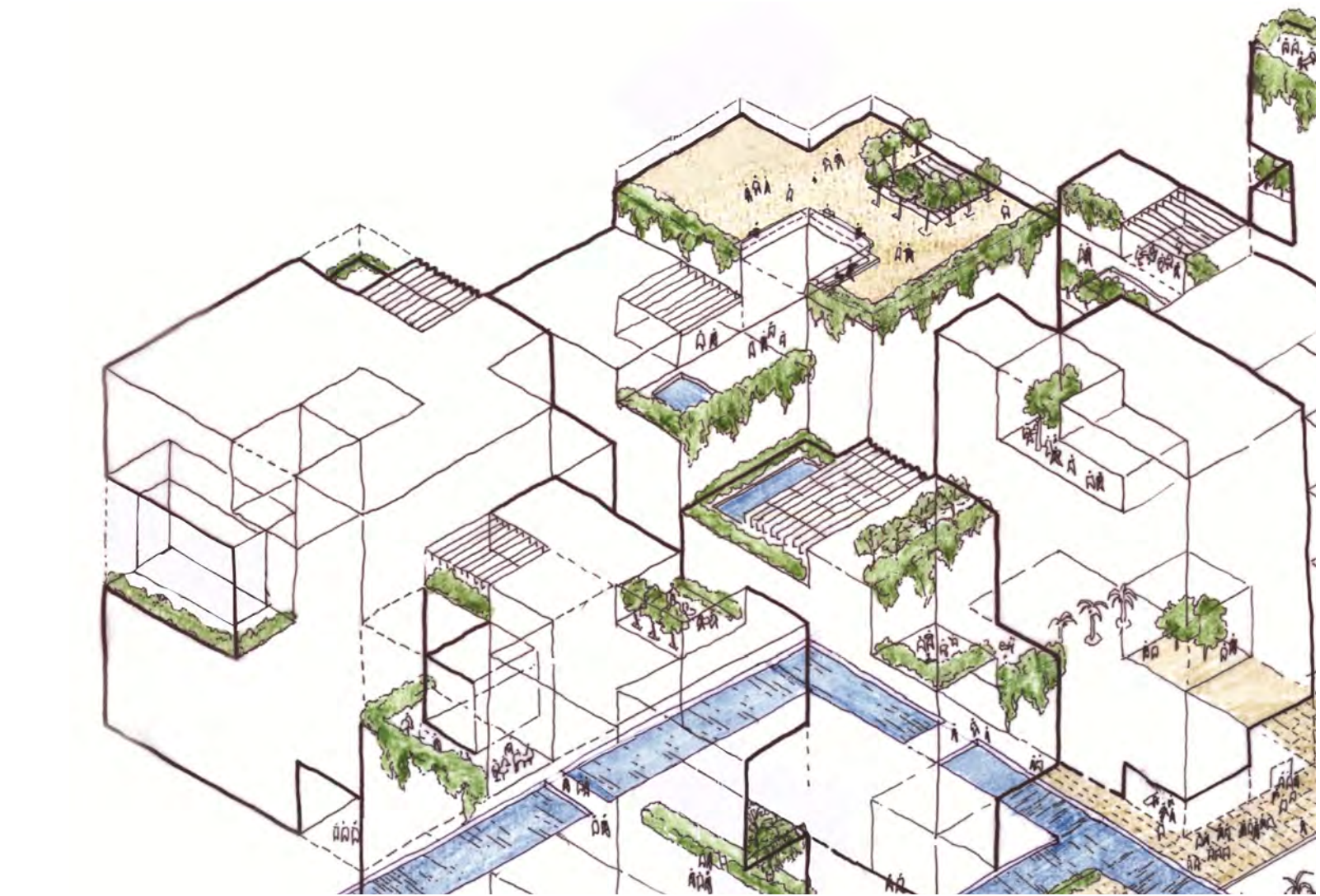




The Business Centre... upper level Plan



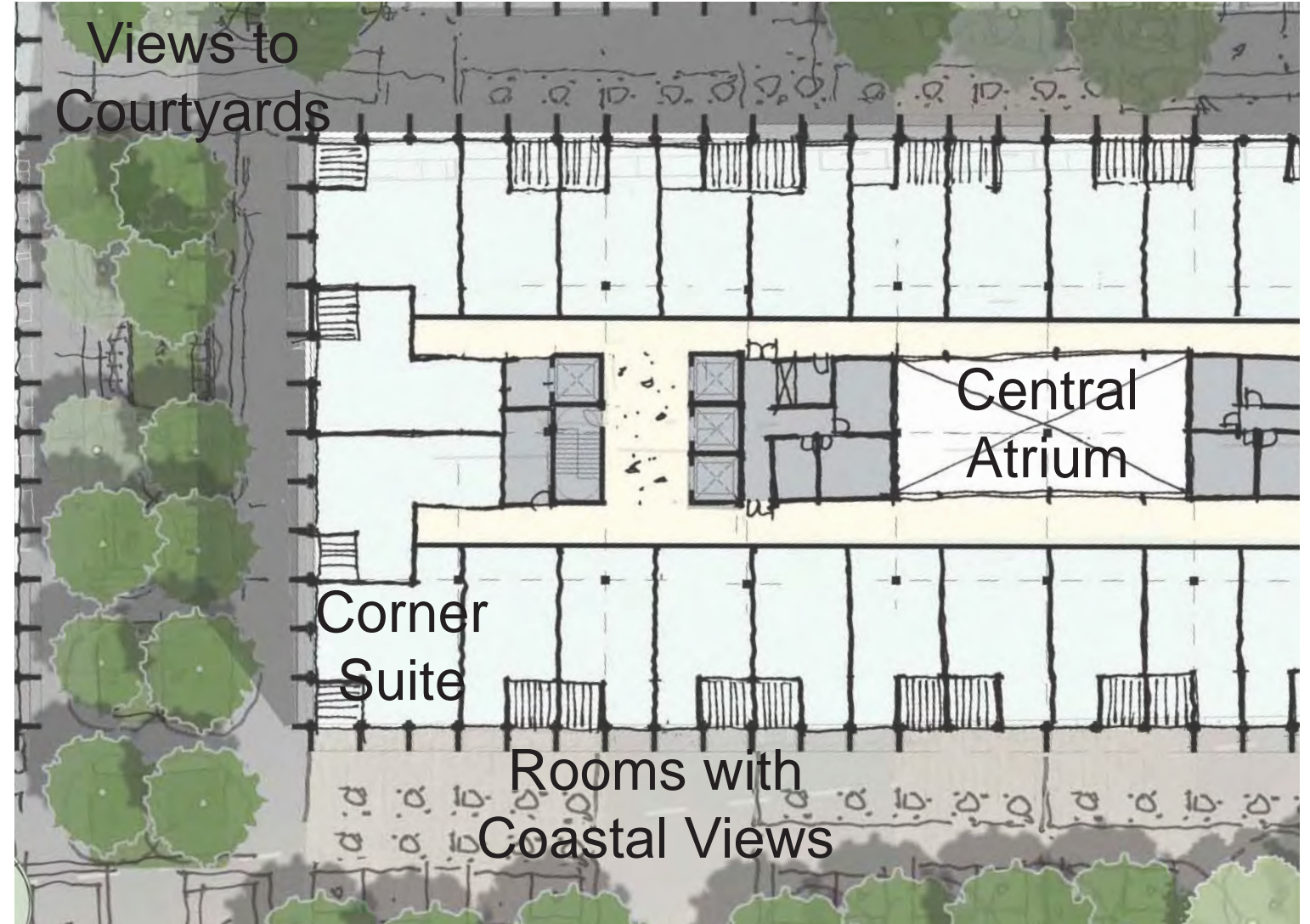
Modular Design, Efficient Layout...



Offices With Activated Rooftop Terraces



Tree Lined Street



Hotel