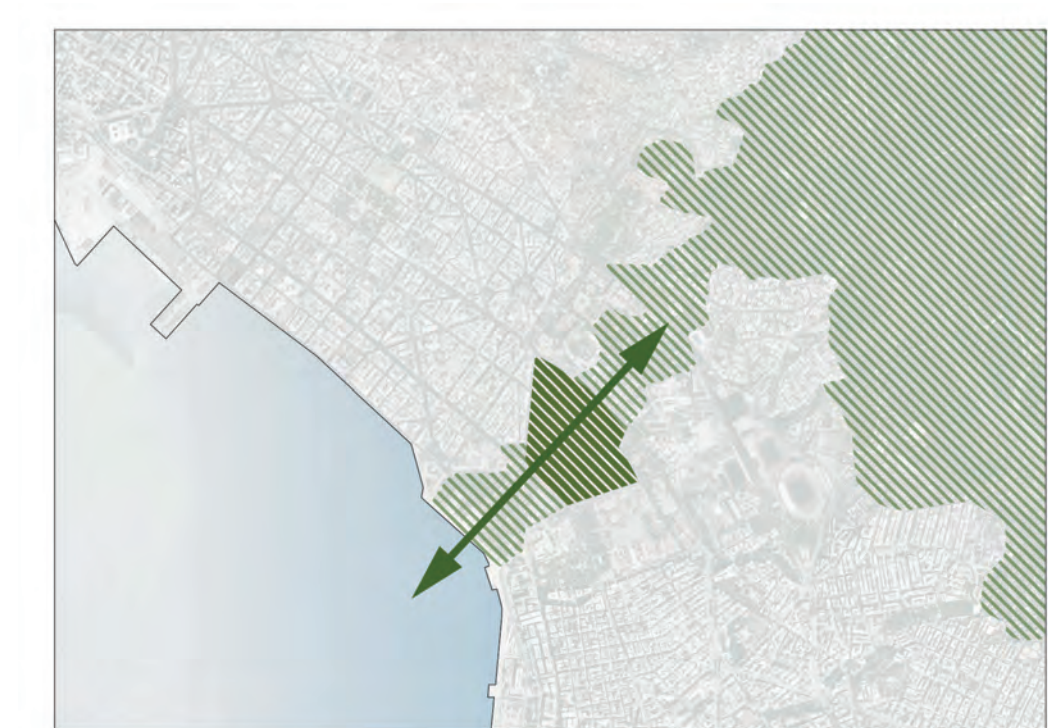




CITY SCALE
1:1500



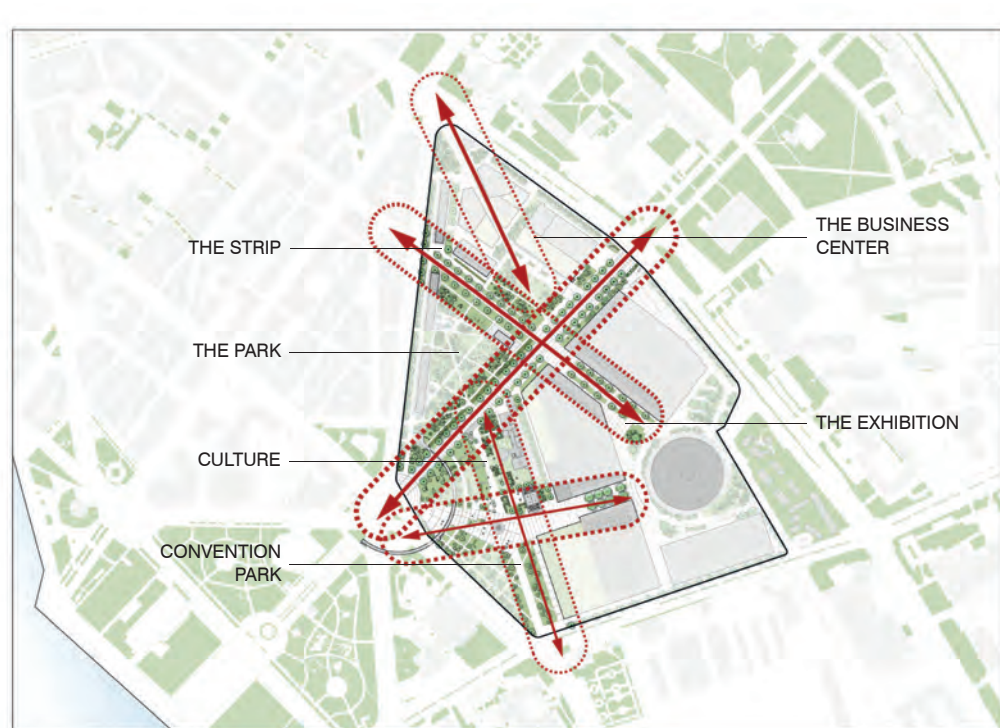
GREEN 'HEART' AND CONTINUITY
From the Thermaic Gulf to the Selk Sou Forest



URBAN LINK
Between the city center and the eastern part of the city



INTEGRATION & CONTINUITY
Spatial and Visual Connections and Transparencies



URBAN SCENOGRAPHY TO CREATE URBAN EXPERIENCES
Spatial Continuity - Urban Narratives - Destinations, Spaces and Mixed Use

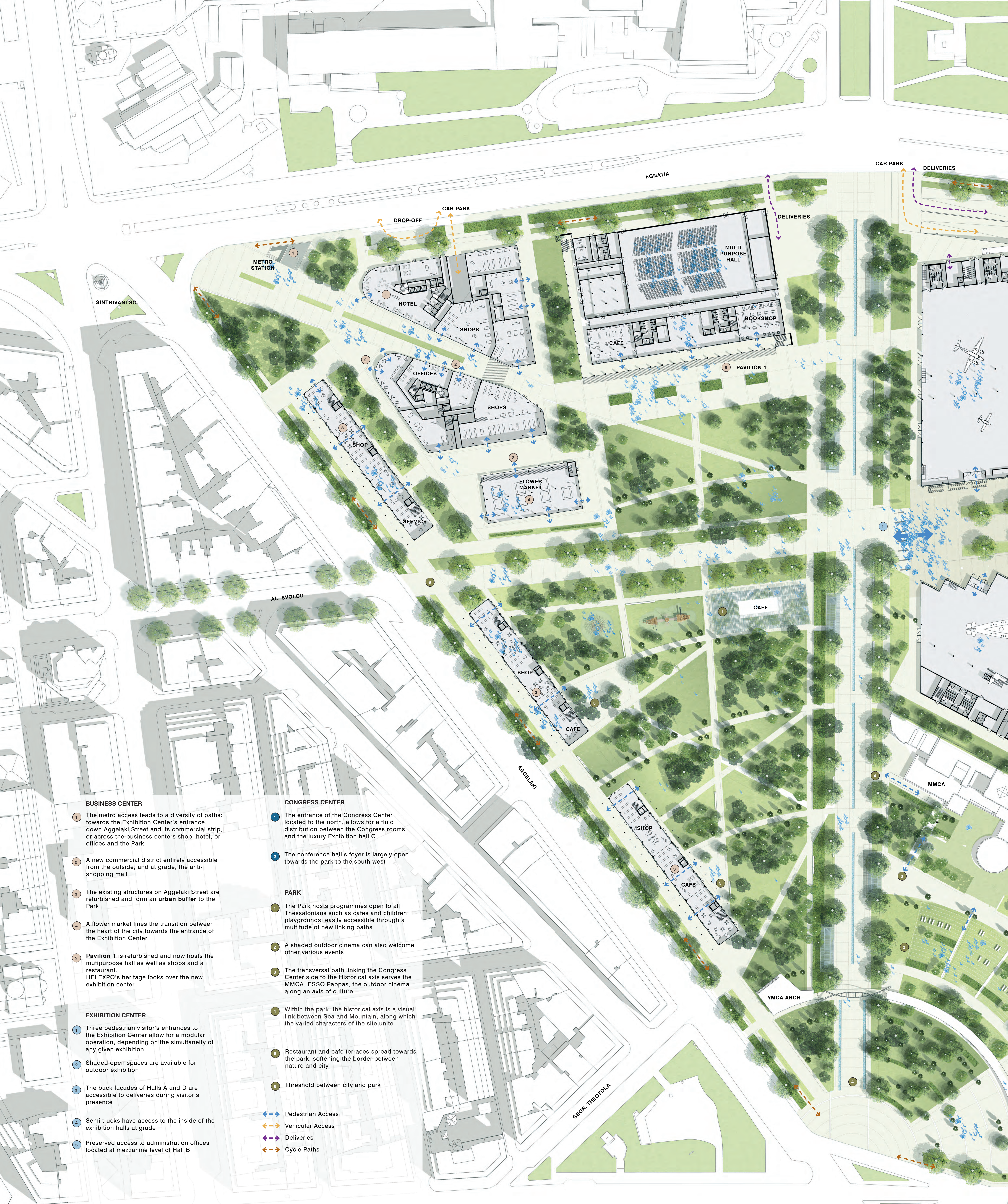


ENHANCING URBAN IDENTITIES AND LOCATIONS
Different Characters of the Sectors



PENETRATION OF SPACE
Redefining the Urban Space





BUSINESS CENTER

- 1 The metro access leads to a diversity of paths: towards the Exhibition Center's entrance, down Aggelaki Street and its commercial strip, or across the business centers shop, hotel, or offices and the Park
- 2 A new commercial district entirely accessible from the outside, and at grade, the anti-shopping mall
- 3 The existing structures on Aggelaki Street are refurbished and form an urban buffer to the Park
- 4 A flower market lines the transition between the heart of the city towards the entrance of the Exhibition Center
- 5 Pavilion 1 is refurbished and now hosts the multipurpose hall as well as shops and a restaurant. HELEXPO's heritage looks over the new exhibition center

EXHIBITION CENTER

- 1 Three pedestrian visitor's entrances to the Exhibition Center allow for a modular operation, depending on the simultaneity of any given exhibition
- 2 Shaded open spaces are available for outdoor exhibition
- 3 The back façades of Halls A and D are accessible to deliveries during visitor's presence
- 4 Semi trucks have access to the inside of the exhibition halls at grade
- 5 Preserved access to administration offices located at mezzanine level of Hall B

CONGRESS CENTER

- 1 The entrance of the Congress Center, located to the north, allows for a fluid distribution between the Congress rooms and the luxury Exhibition hall C
- 2 The conference hall's foyer is largely open towards the park to the south west

PARK

- 1 The Park hosts programmes open to all Thessalonians such as cafes and children playgrounds, easily accessible through a multitude of new linking paths
- 2 A shaded outdoor cinema can also welcome other various events
- 3 The transversal path linking the Congress Center side to the Historical axis serves the MMCA, ESSO Pappas, the outdoor cinema along an axis of culture
- 4 Within the park, the historical axis is a visual link between Sea and Mountain, along which the varied characters of the site unite
- 5 Restaurant and cafe terraces spread towards the park, softening the border between nature and city
- 6 Threshold between city and park

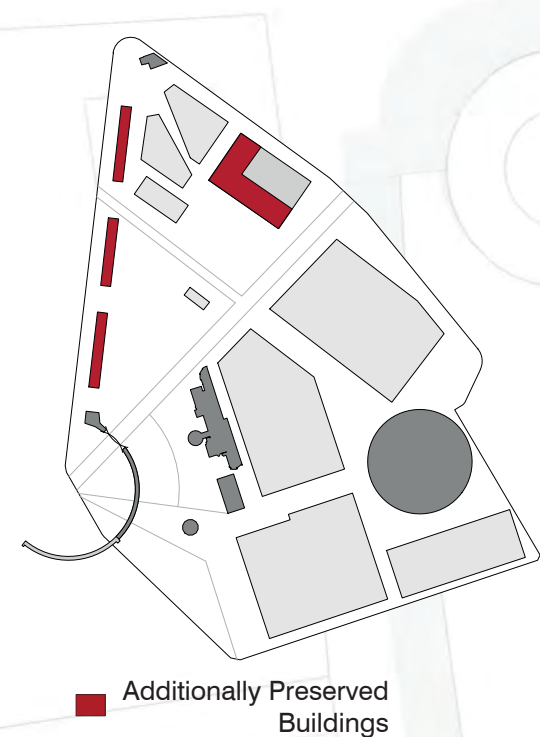
- ➡ Pedestrian Access
- ➡ Vehicular Access
- ➡ Deliveries
- ➡ Cycle Paths

THE LOCAL HERITAGE

PRESERVING AND SHOWCASING TIF HELEXPO'S ARCHITECTURAL HISTORY - REVITALISING ARCHITECTURAL TREASURES, SAVING CARBON



SITE SCALE
1:500



THE COLOURS OF THE EARTH

A SUSTAINABLE PALETTE OF MATERIALS, A FRUGAL CONSTRUCTIVE APPROACH INSPIRED BY LOCAL CULTURE AND HISTORY



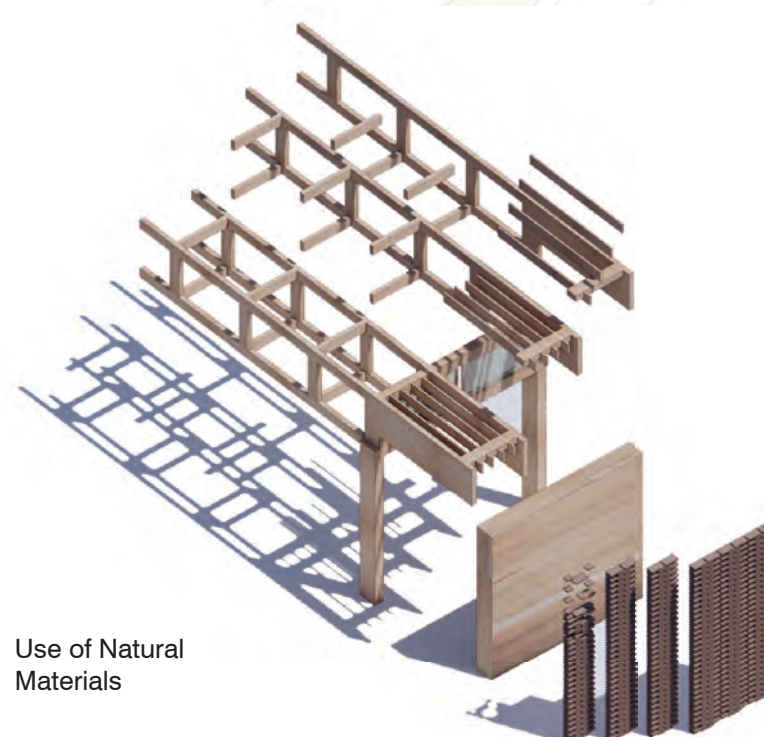
earth



clay



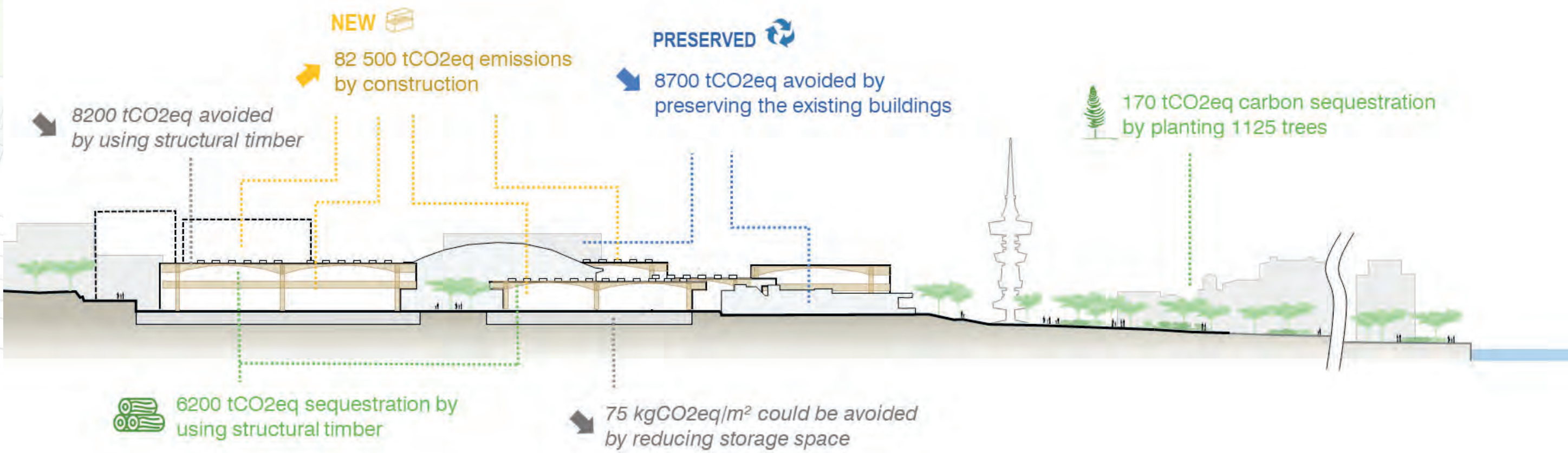
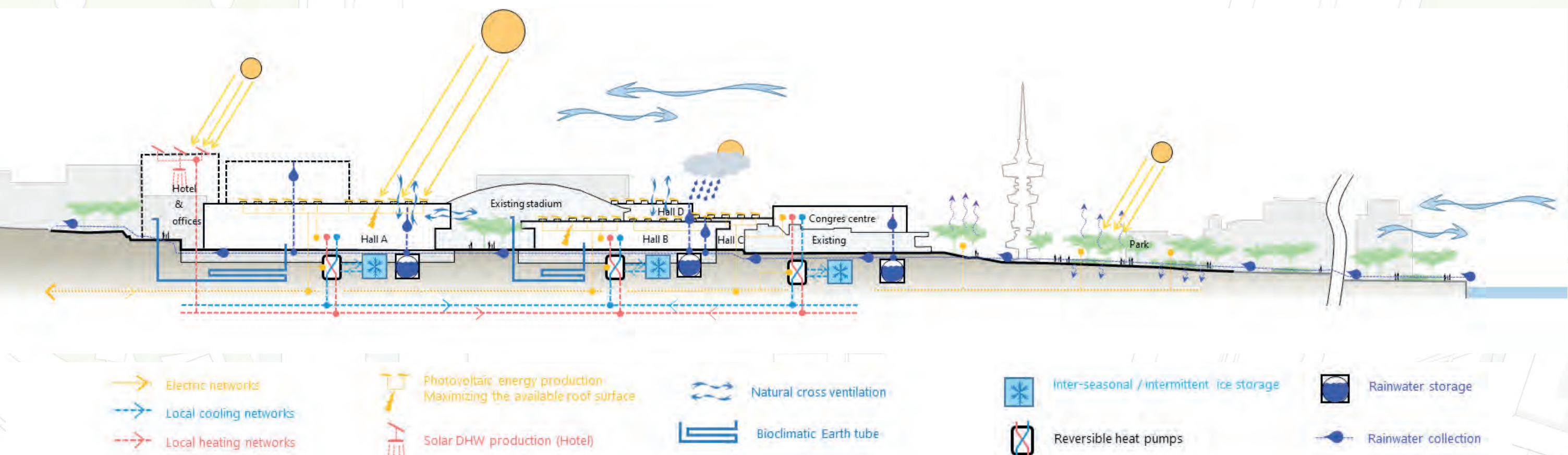
wood



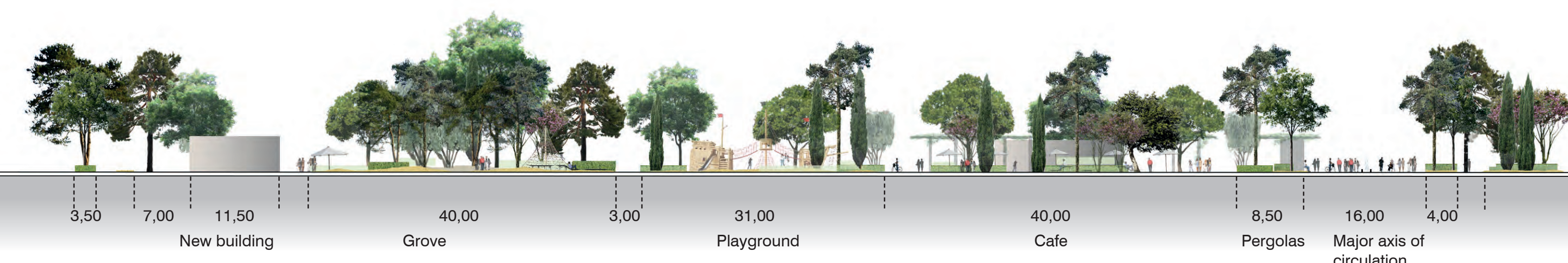
Use of Natural Materials



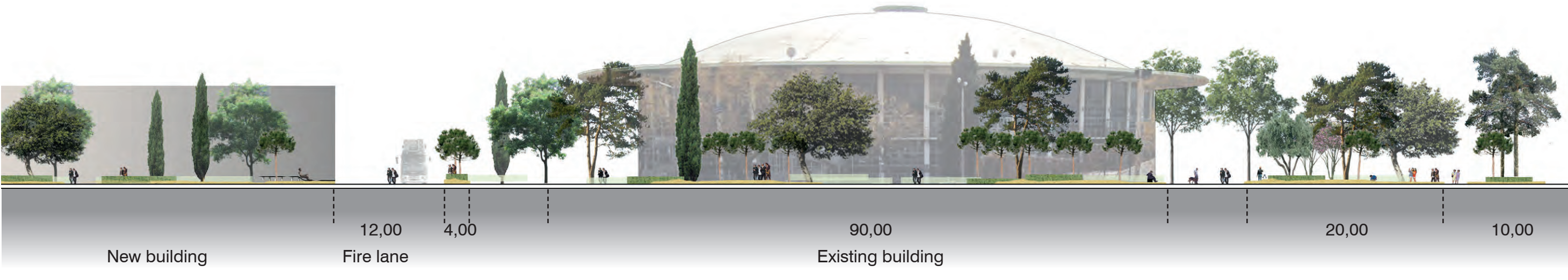
ZERO CO² A CONCEPT BASED ON SITE-SPECIFIC RENEWABLE ENERGY SOURCES AND WATER MANAGEMENT TO REDUCE THE CARBON FOOTPRINT



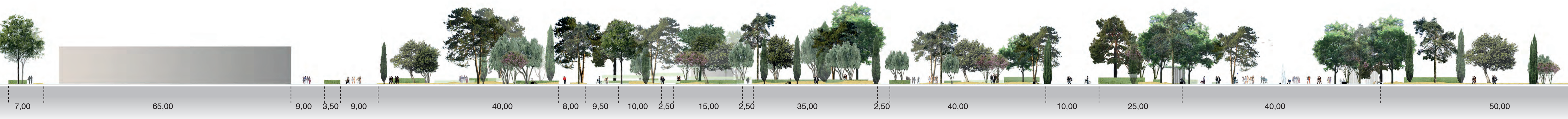
LANDSCAPE



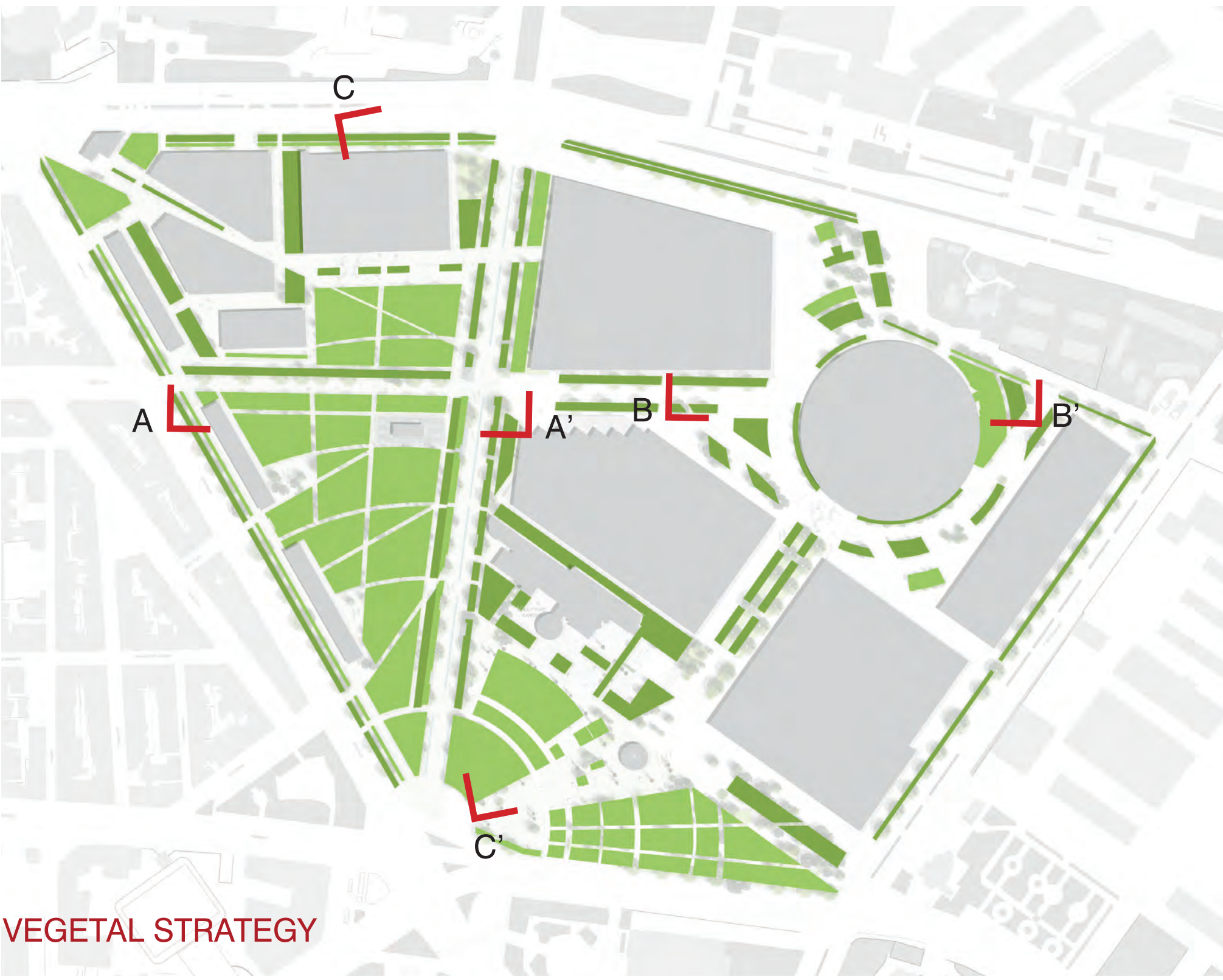
CROSS SECTION AA



CROSS SECTION BB



CROSS SECTION CC



VEGETAL STRATEGY

The park is a permeable space of 8 hectares.



Groves, flexible and natural organization, various species, 890 units.



Structuring axes, alignment of trees, 235 units.



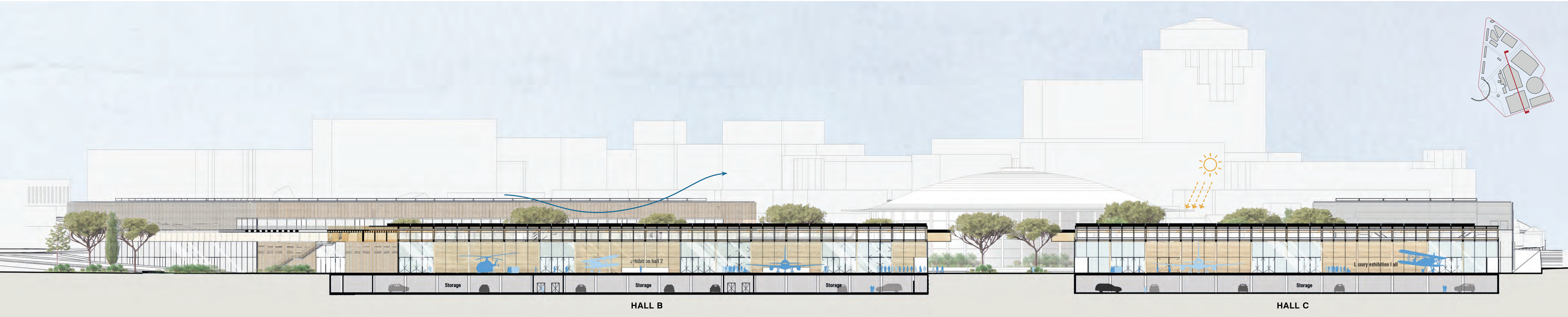
The herbaceous layer is mostly represented by lawn surfaces. However, occasional plantations complete it with bases, transition space between mineral and green volumes. They are mostly evergreen, flowering and fragrant.



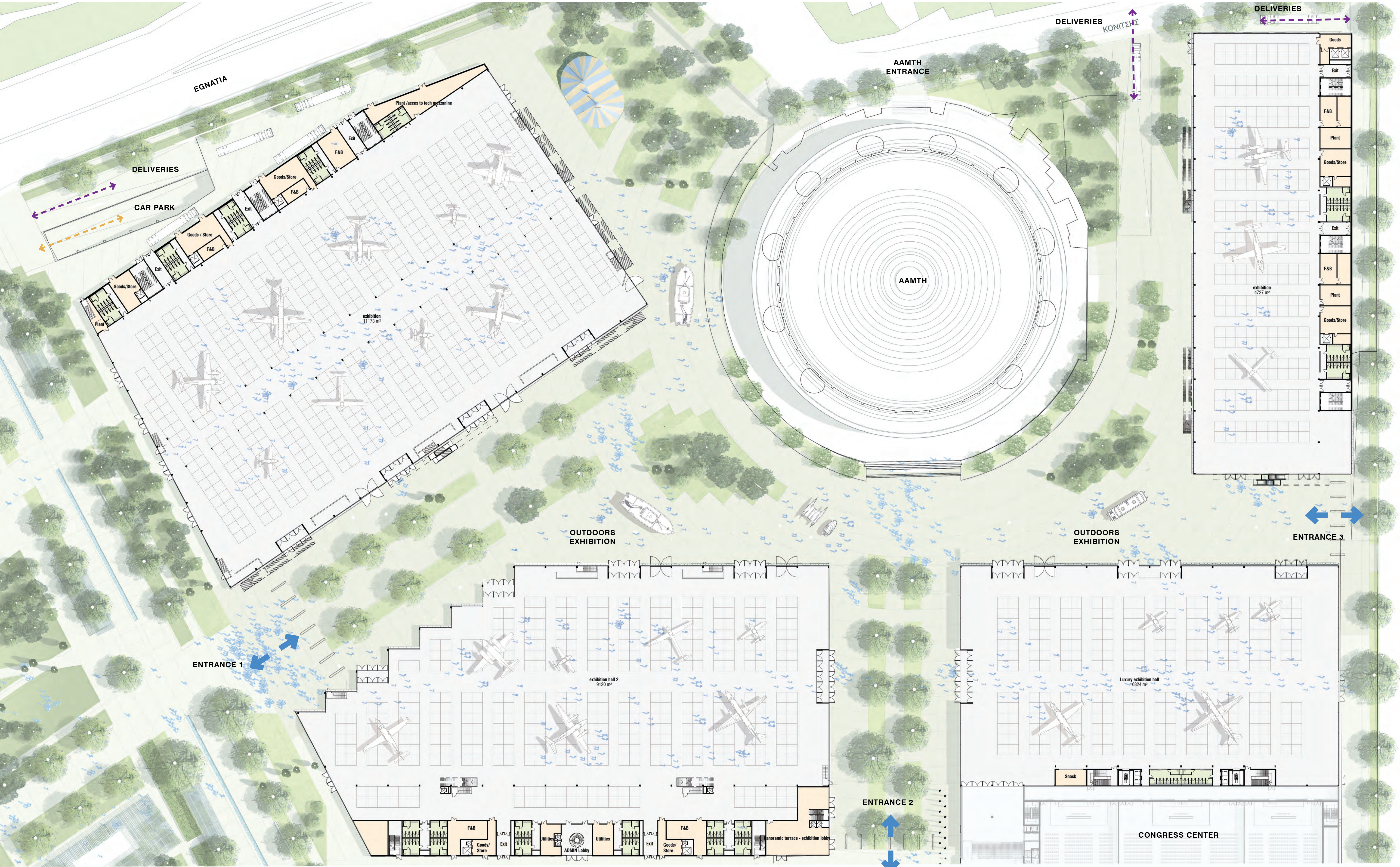
The trees of the project are mostly evergreen, they are part of the extension of existing wooded masses. The trees will be mostly in raised stems in order to clear the views towards the horizon.



EXHIBITION BUILDINGS

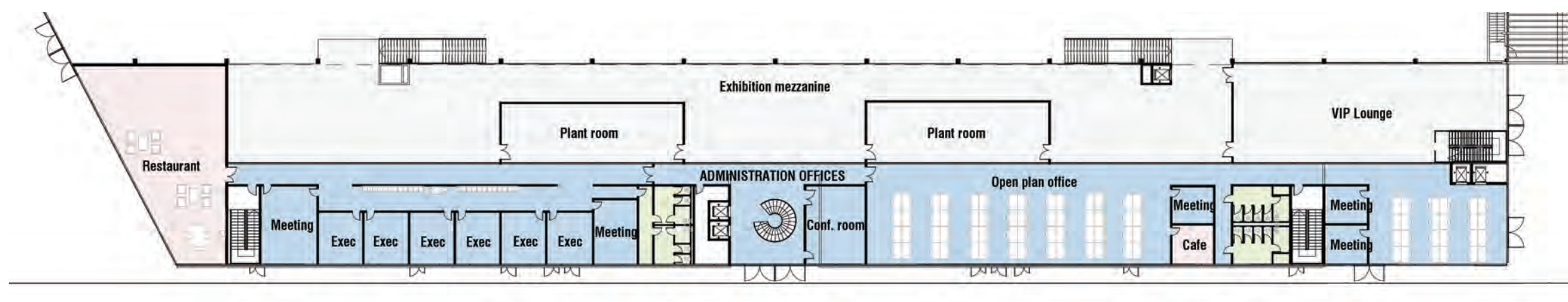


SECTION THROUGH HALLS B AND C
1:500



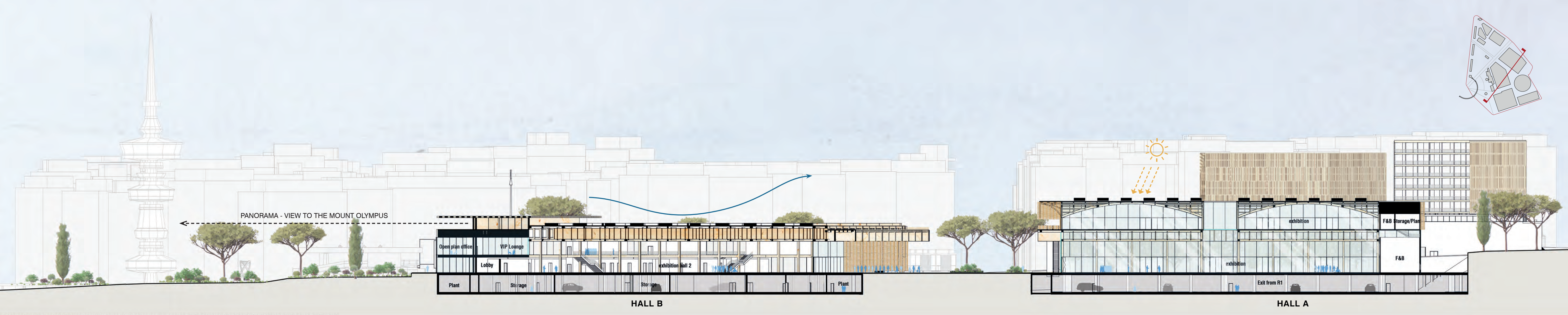
GROUND FLOOR
1:500

MEZZANINE HALL B
1:500

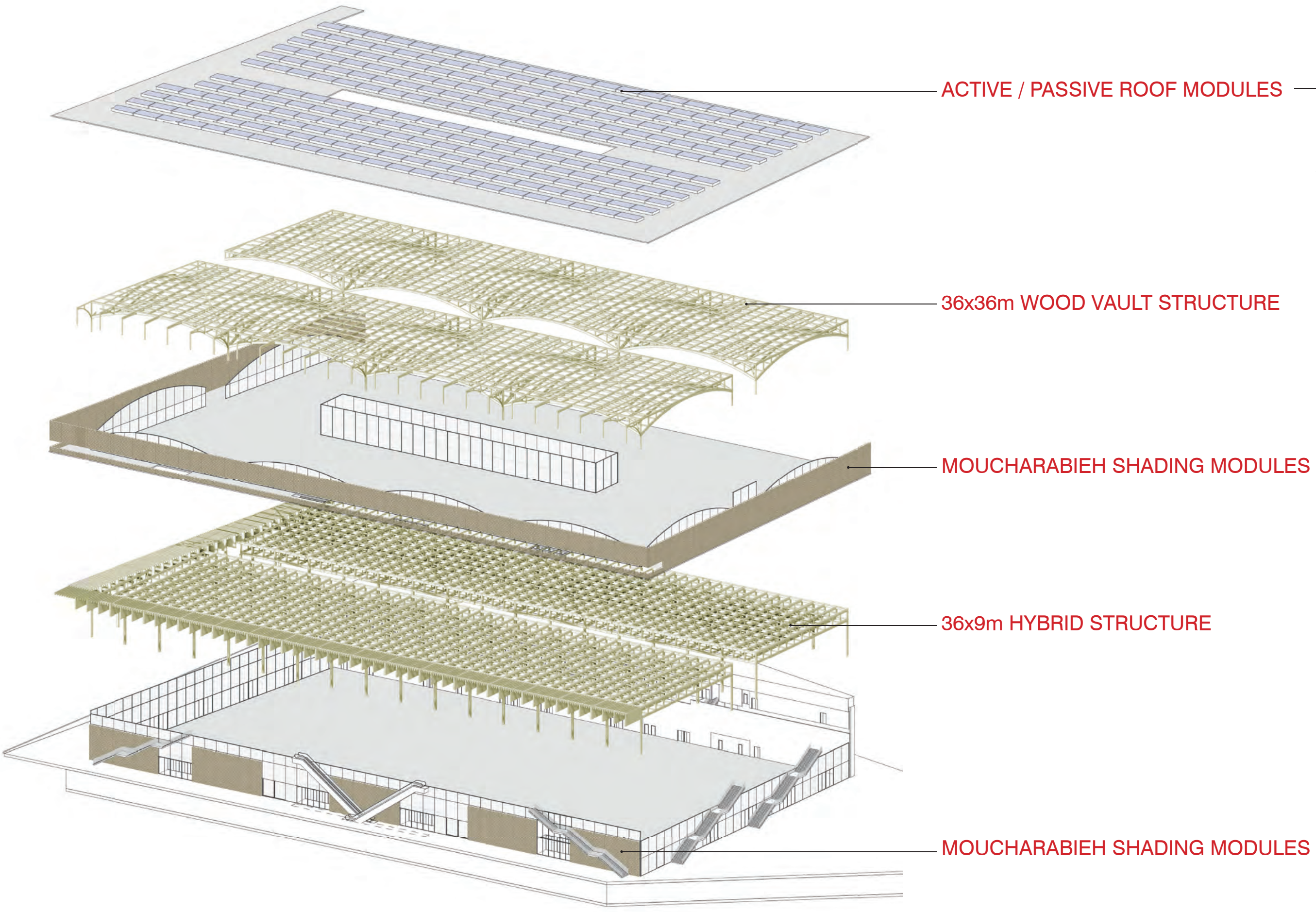


- Hotel
- Office
- Commerce
- Multipurpose Hall
- Service
- Parking

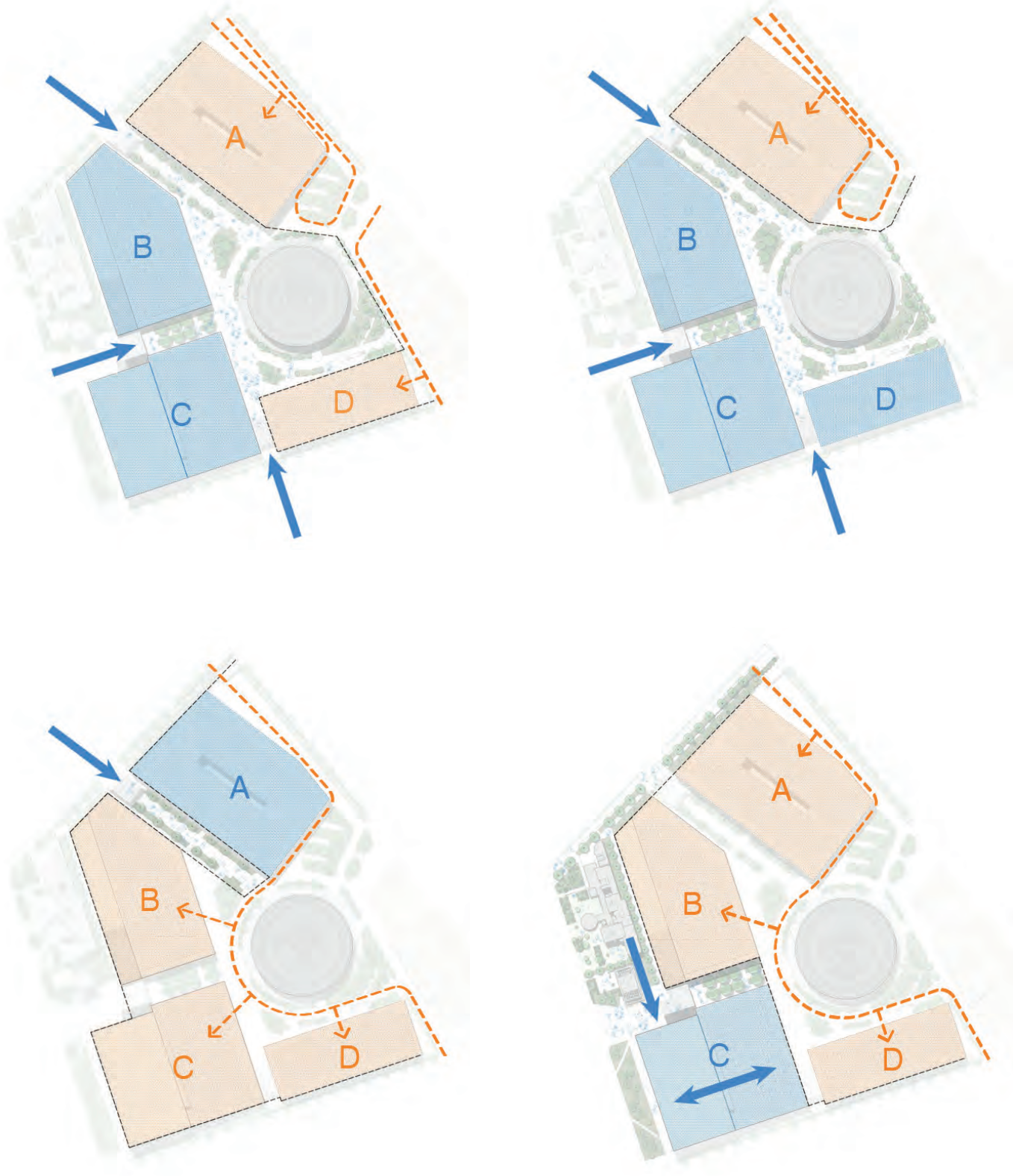
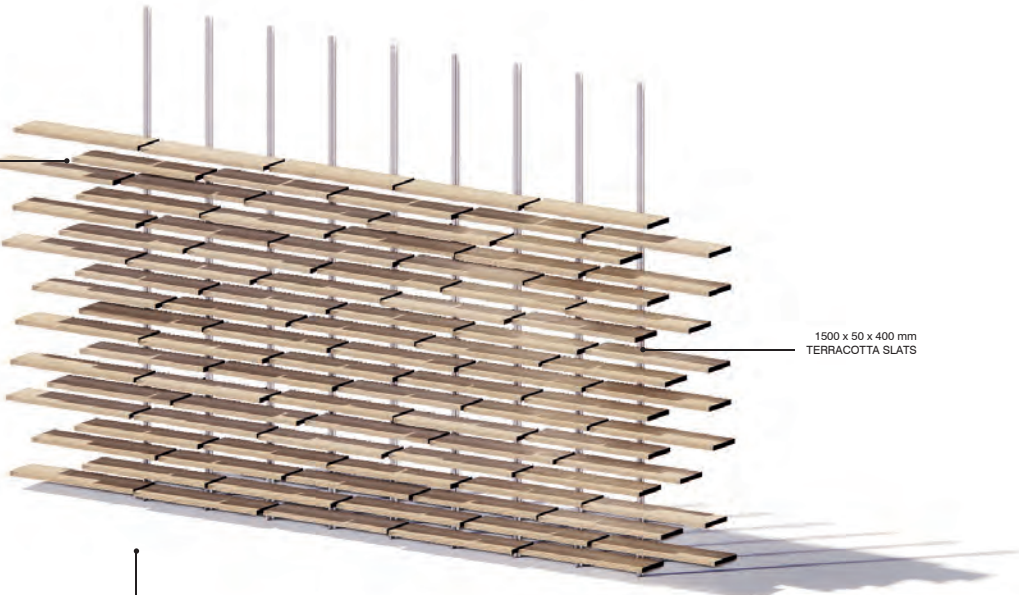
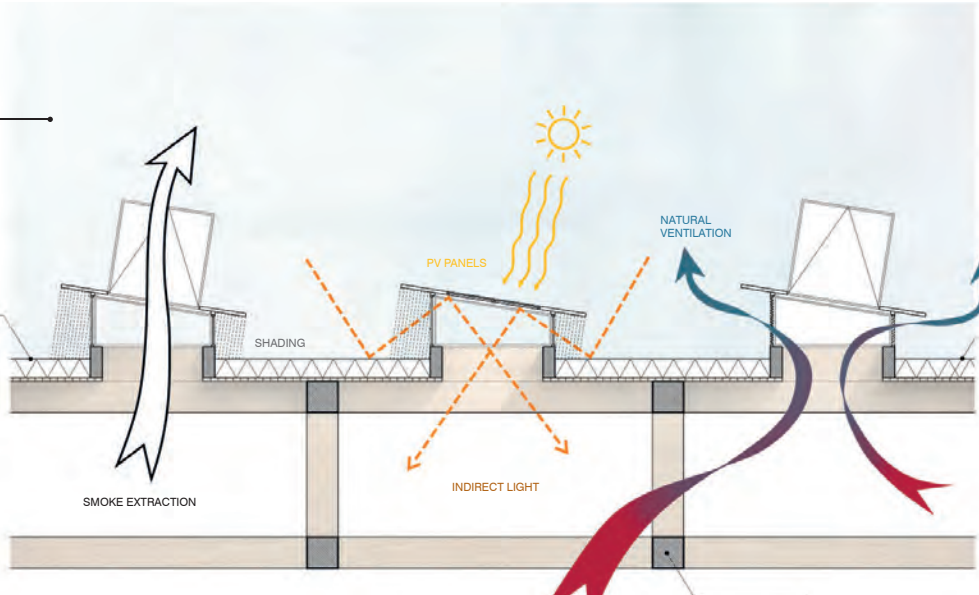
EXHIBITION BUILDINGS



SECTION THROUGH HALLS A AND B
1:500

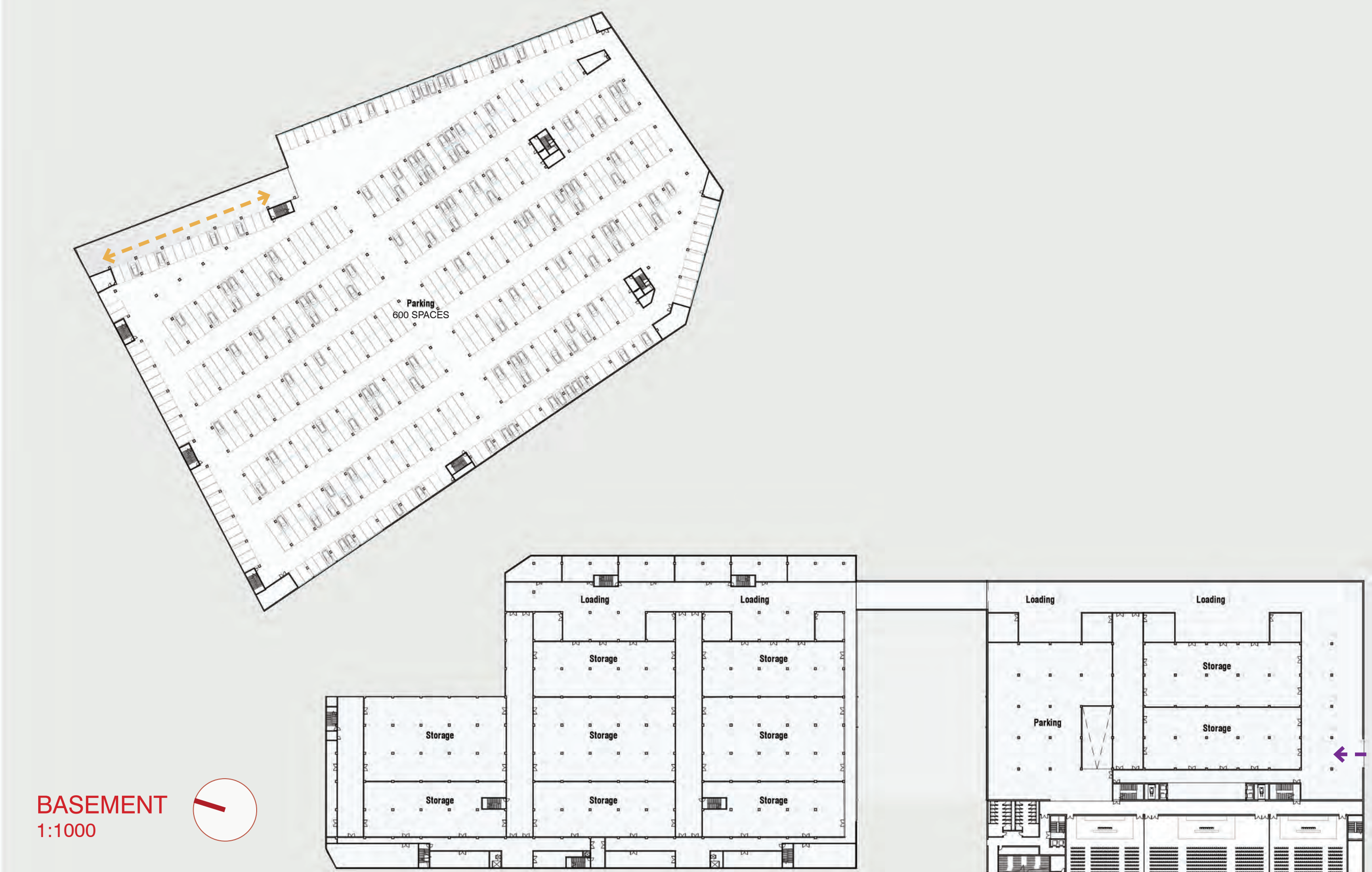
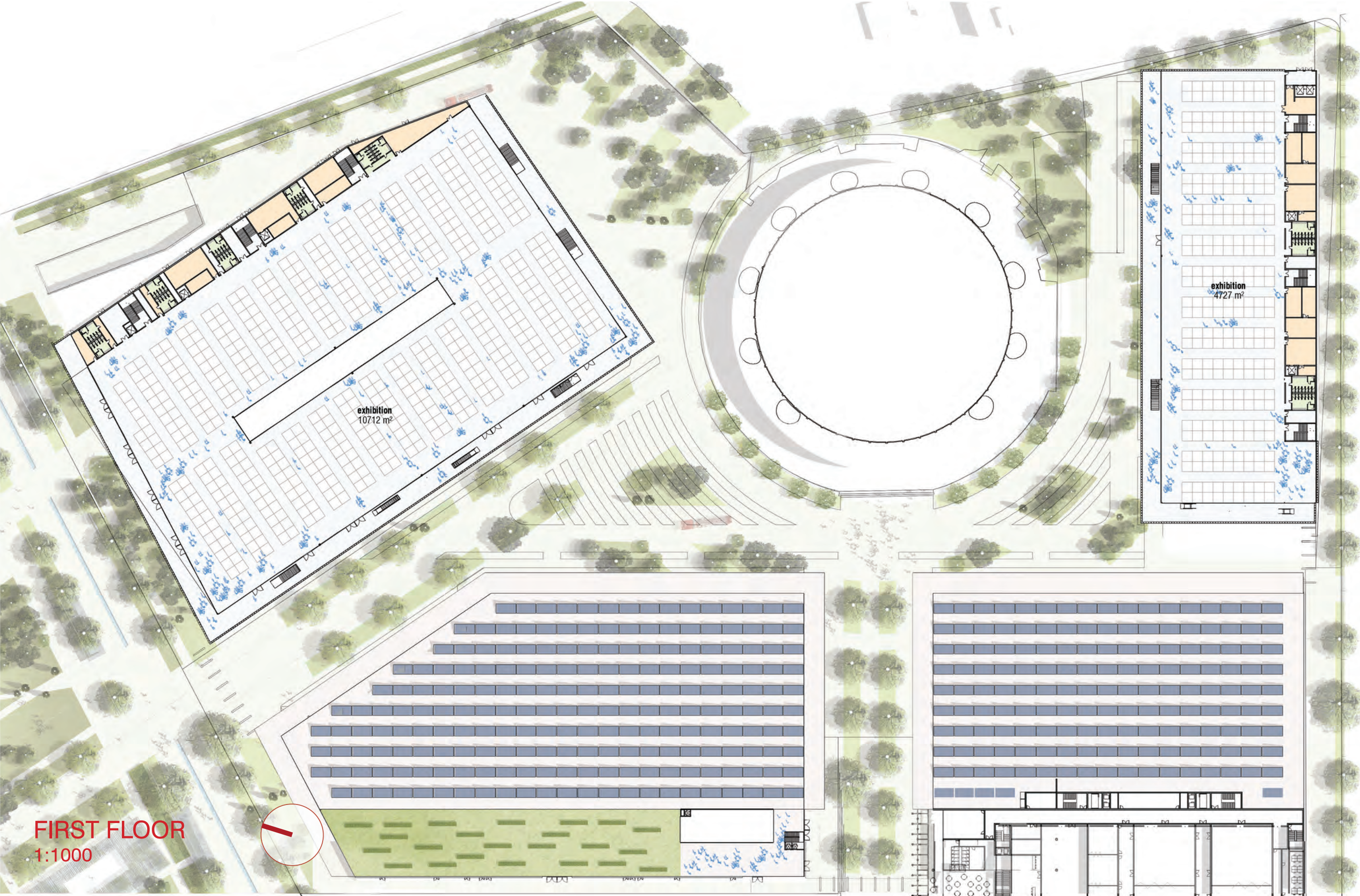


EXPLODED HALL A DIAGRAM

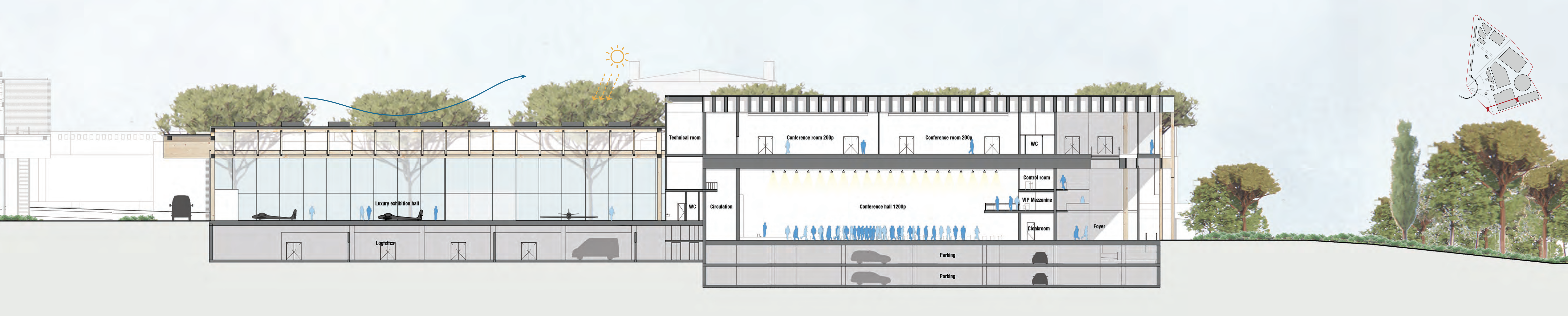


MODULAR USAGE

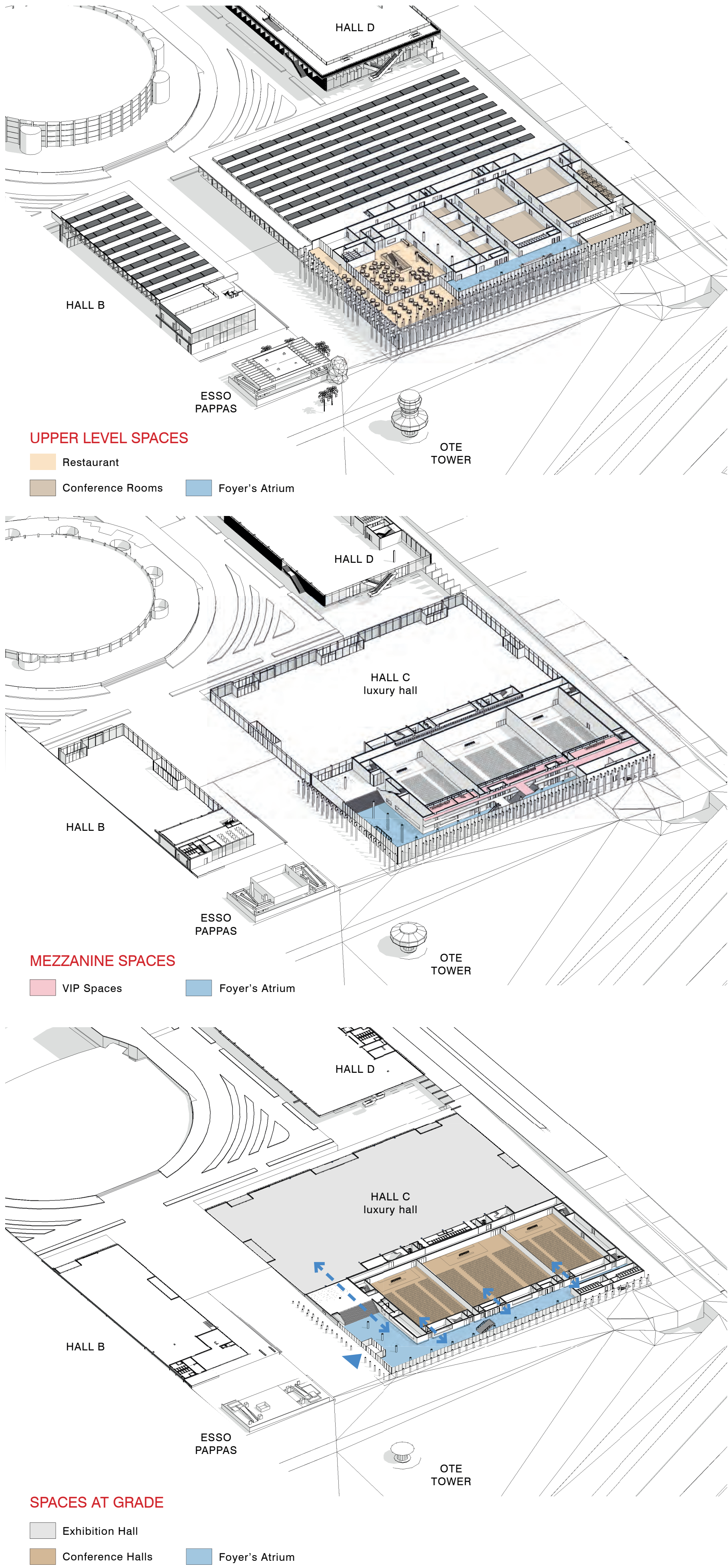
- CLOSED EXHIBITION SPACE
- LOGISTICS
- OPEN EXHIBITION SPACE
- VISITOR ACCESS



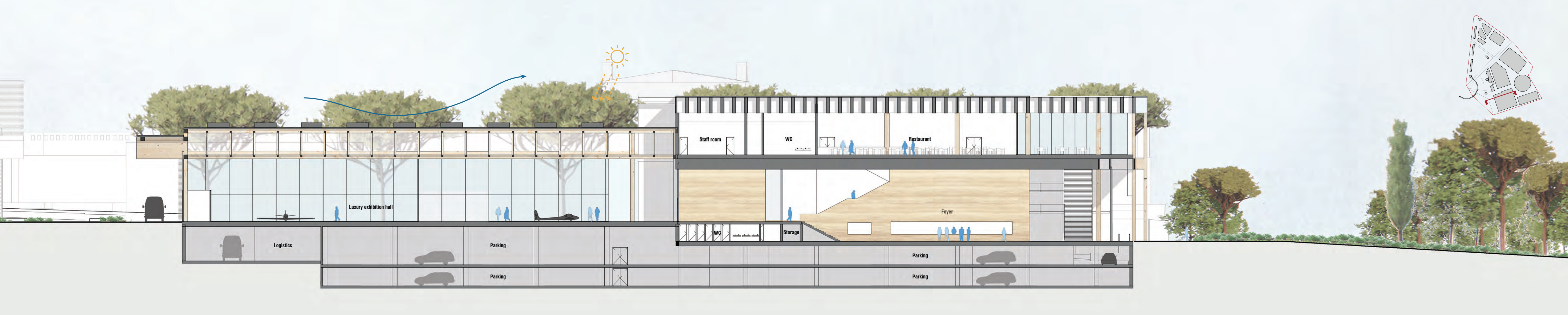
CONGRESS CENTER



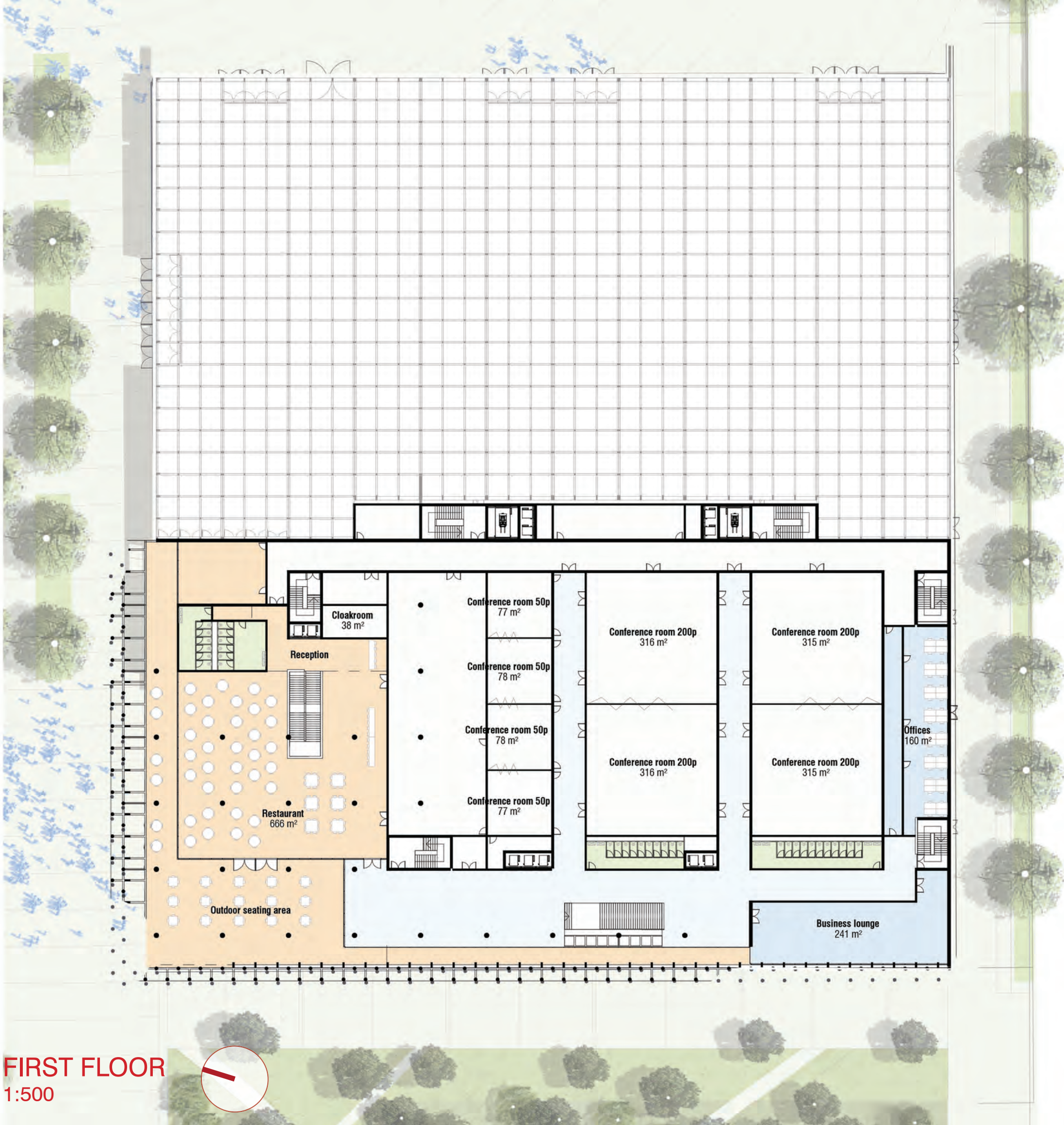
SECTION THROUGH THE CONGRESS CENTER
1:250



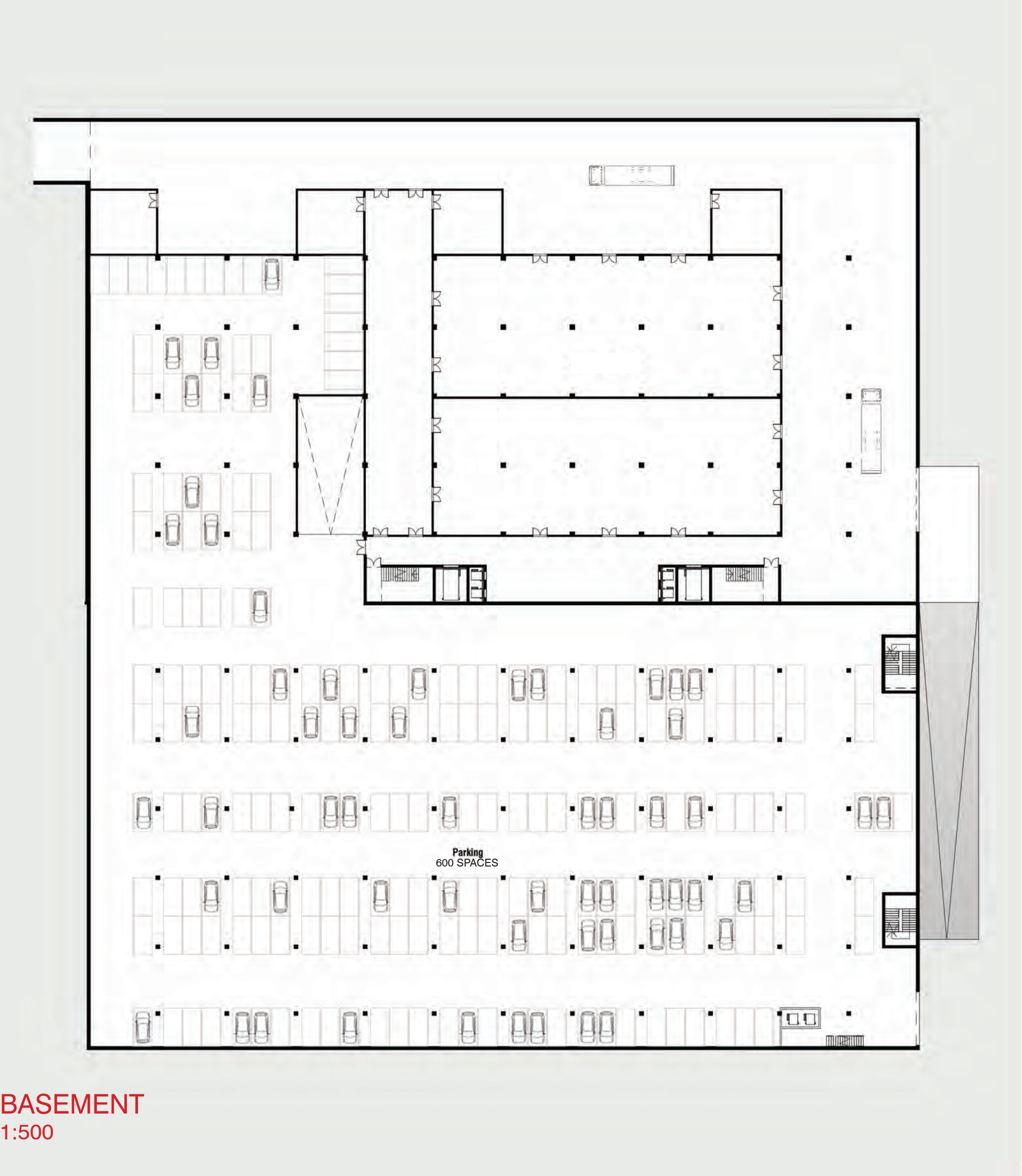
CONGRESS CENTER



SECTION THROUGH THE CONGRESS CENTER
1:250

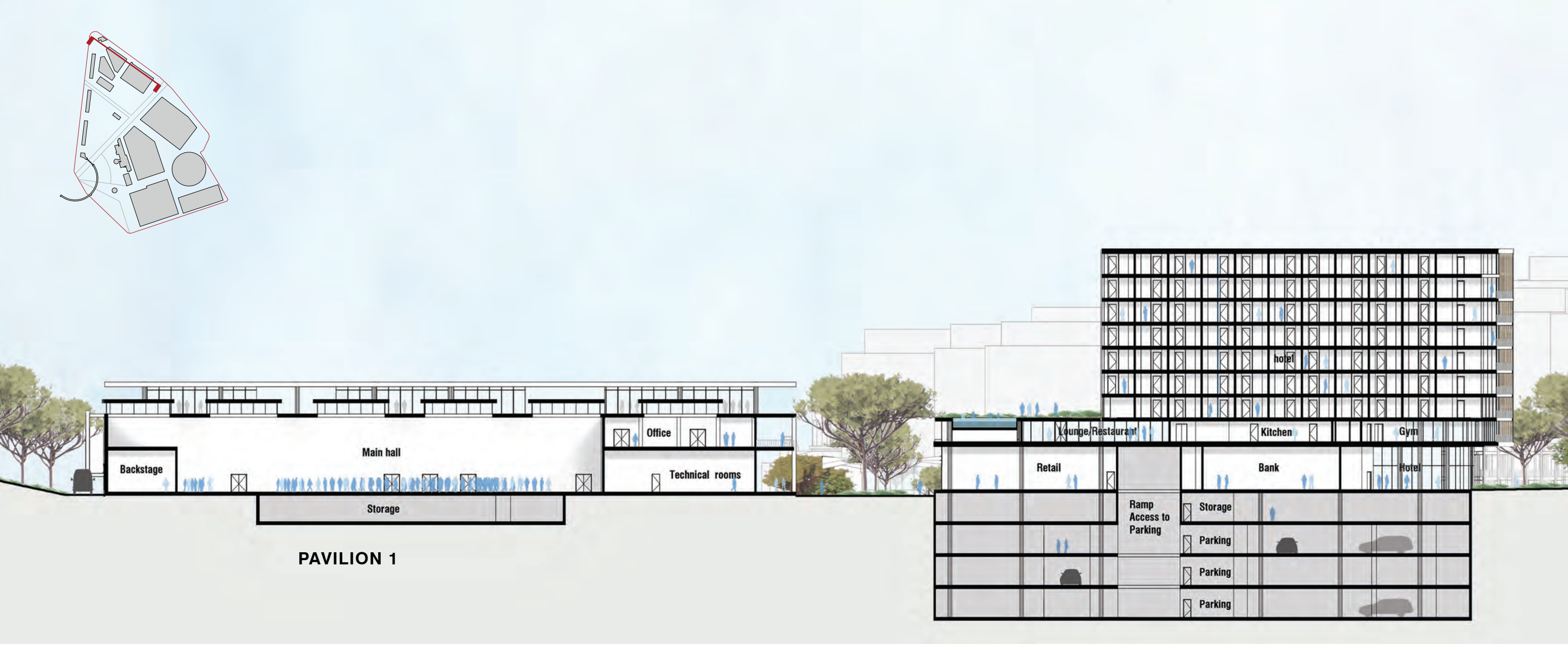


FIRST FLOOR
1:500

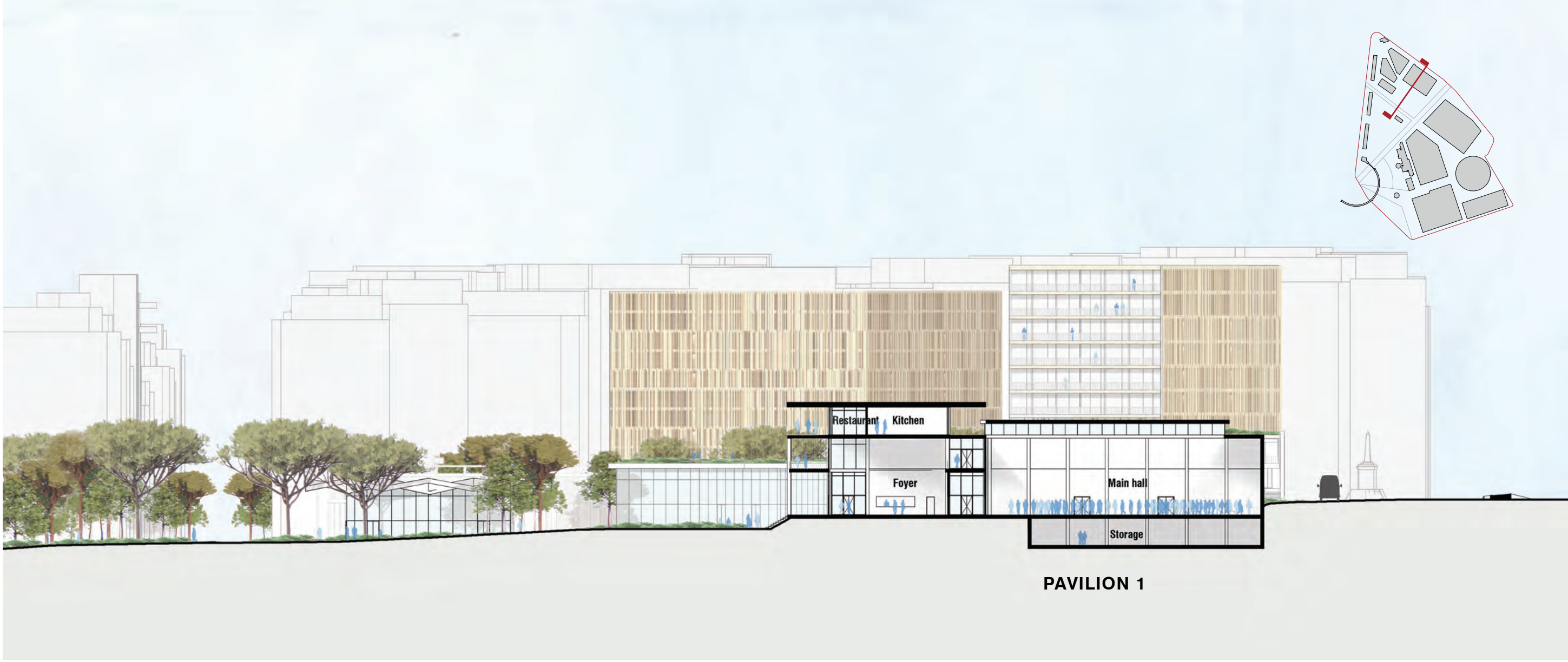


BASEMENT
1:500

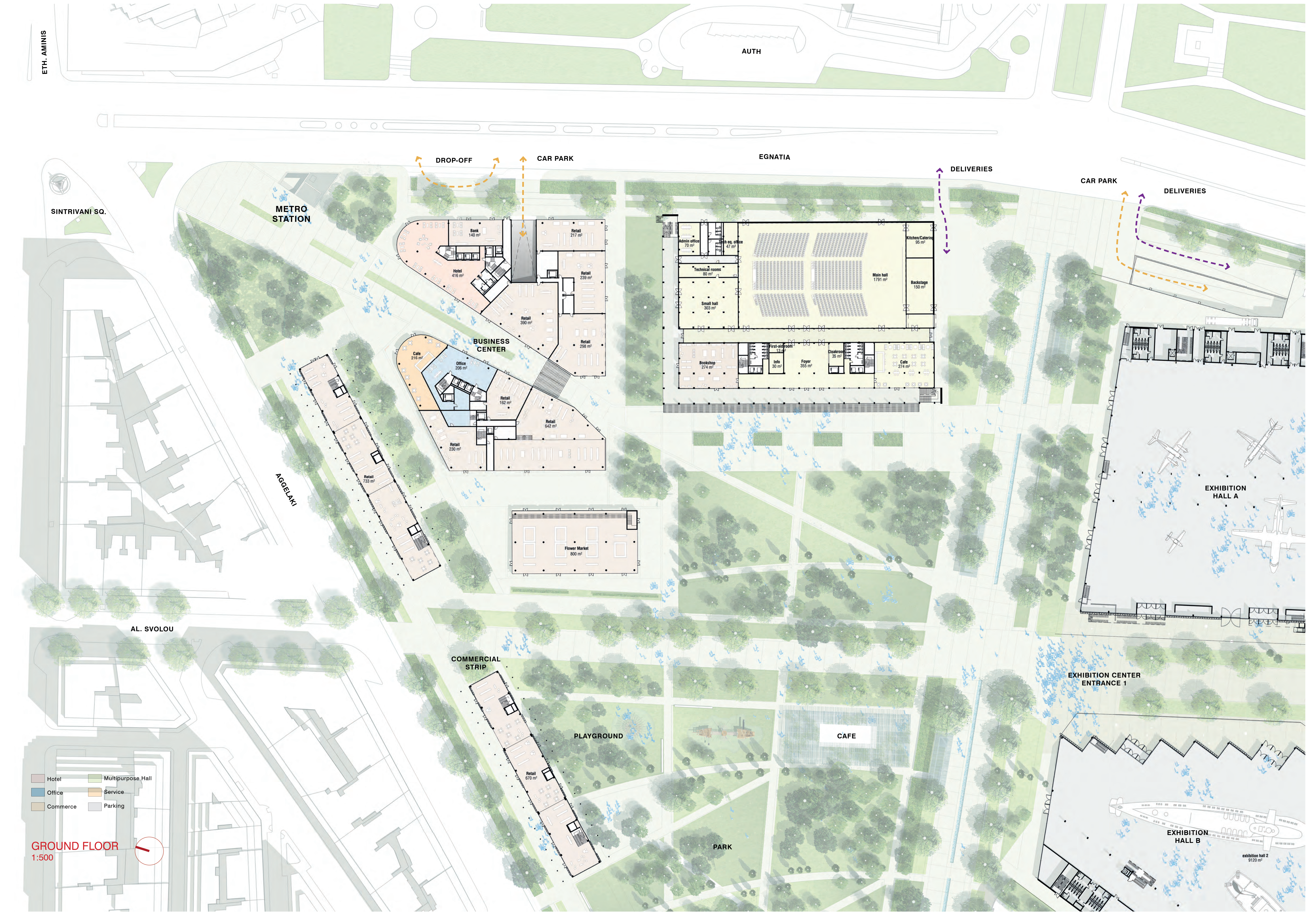
BUSINESS CENTER



SECTION THROUGH BUSINESS CENTER
1:500



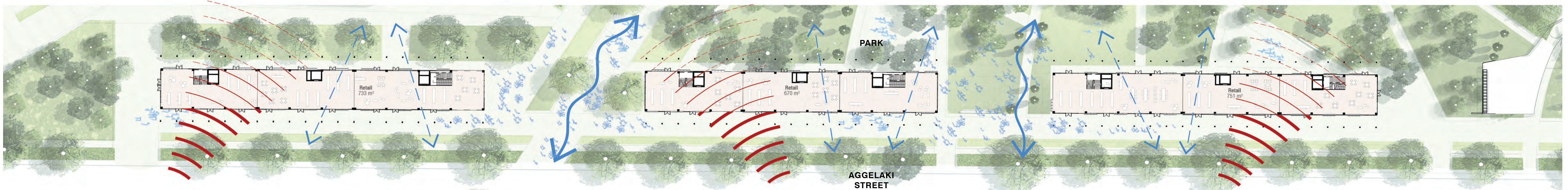
SECTION THROUGH PAVILION 1
1:500





SECTION THROUGH COMMERCIAL STRIP ON AGGELAKI STREET

1:500



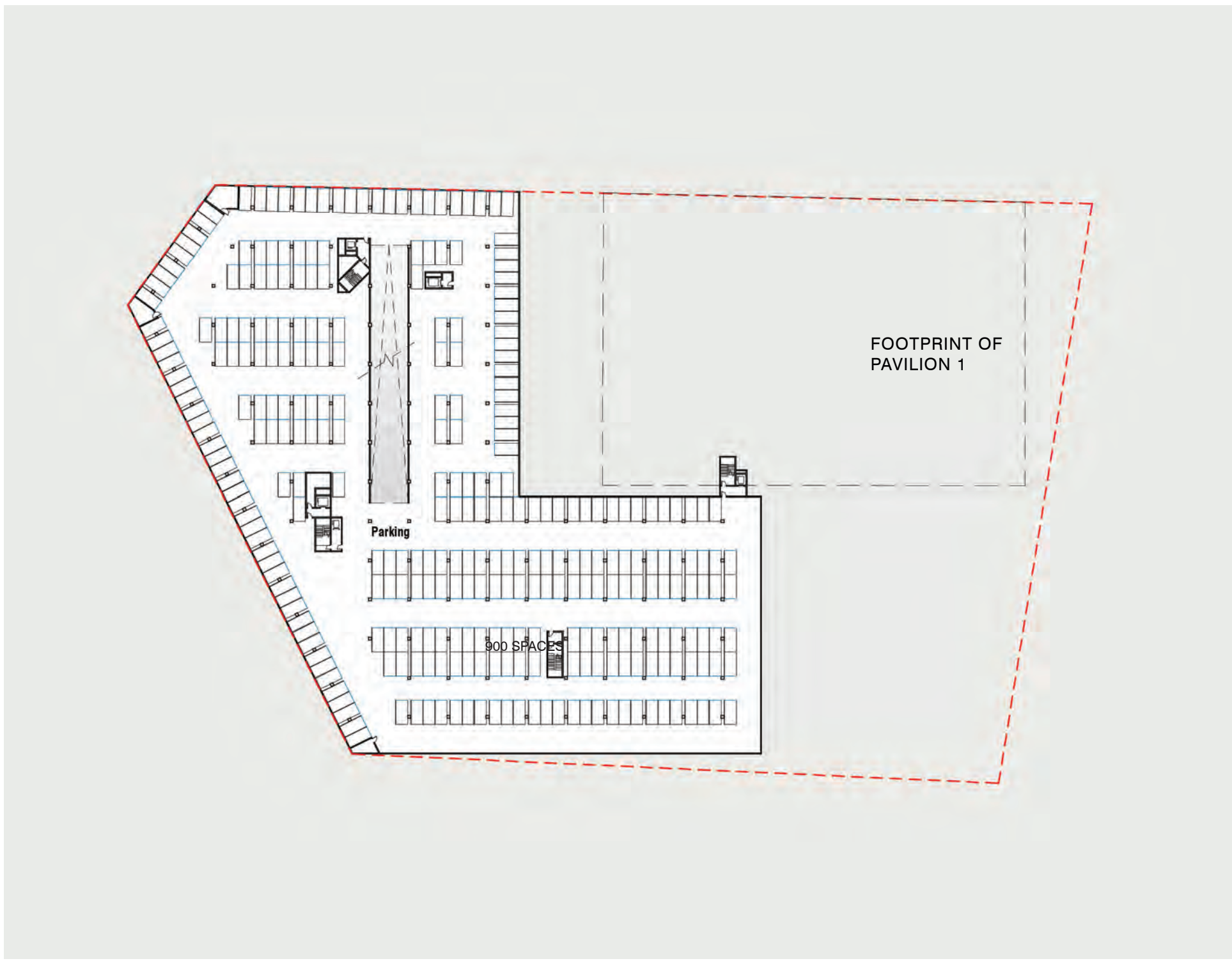
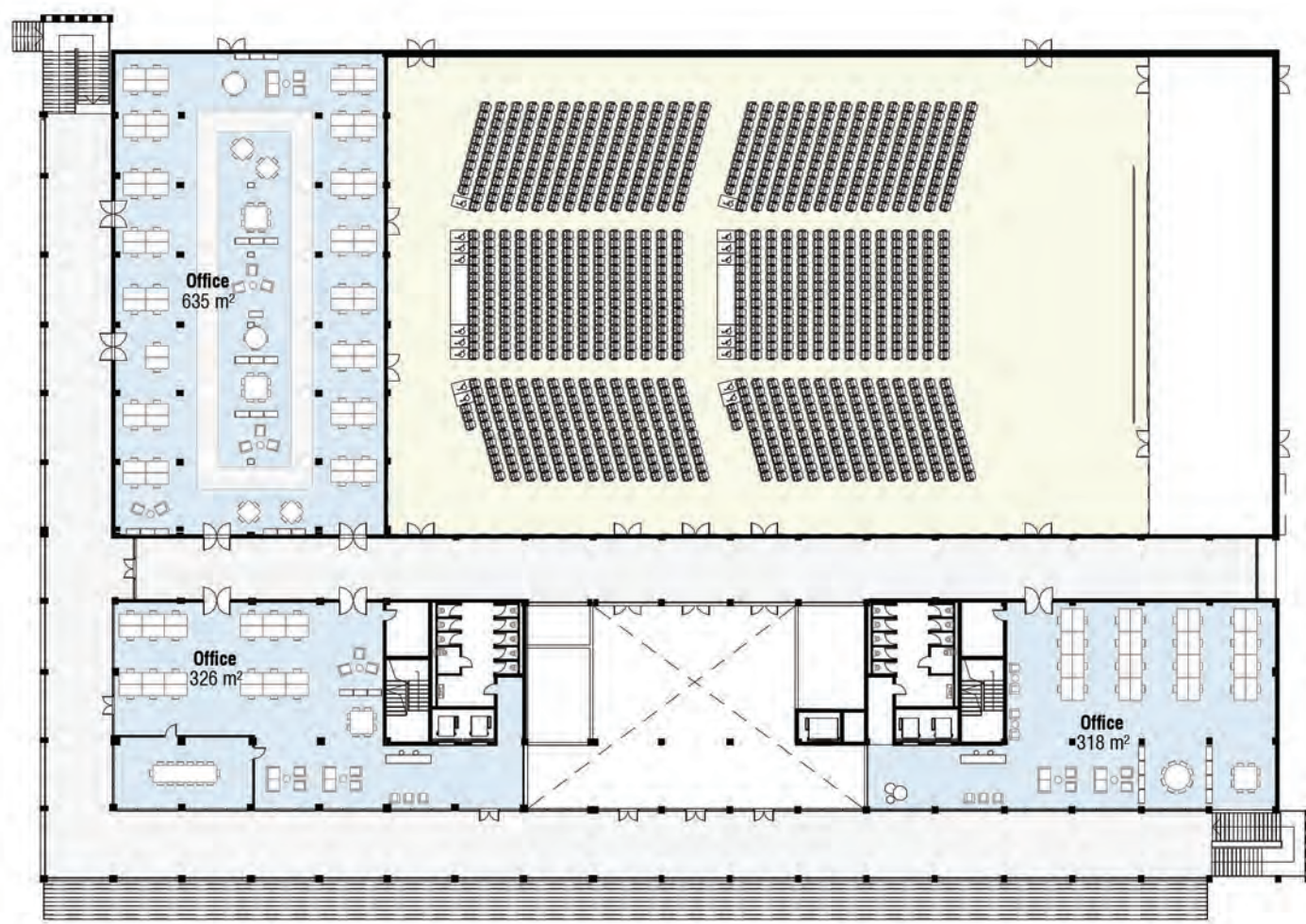
GROUND FLOOR PLAN OF COMMERCIAL STRIP ON AGGELAKI ST.

1:500



SECOND FLOOR PLAN OF THE BUSINESS CENTER

1:500



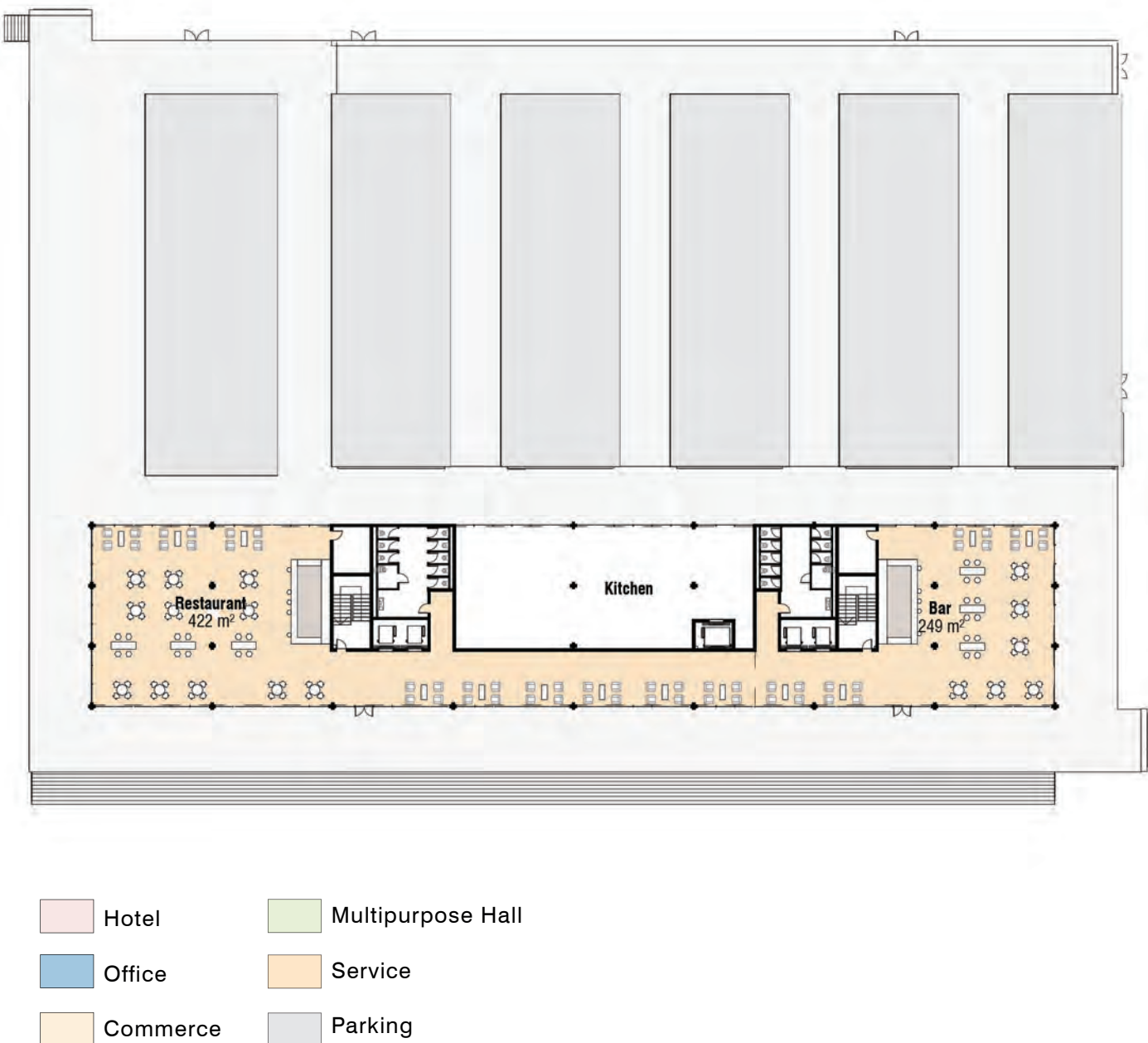
BASEMENT PLAN

1:1000



TYPICAL FLOOR PLAN OF THE BUSINESS CENTER

1:500



Hotel Multipurpose Hall
Office Service
Commerce Parking

