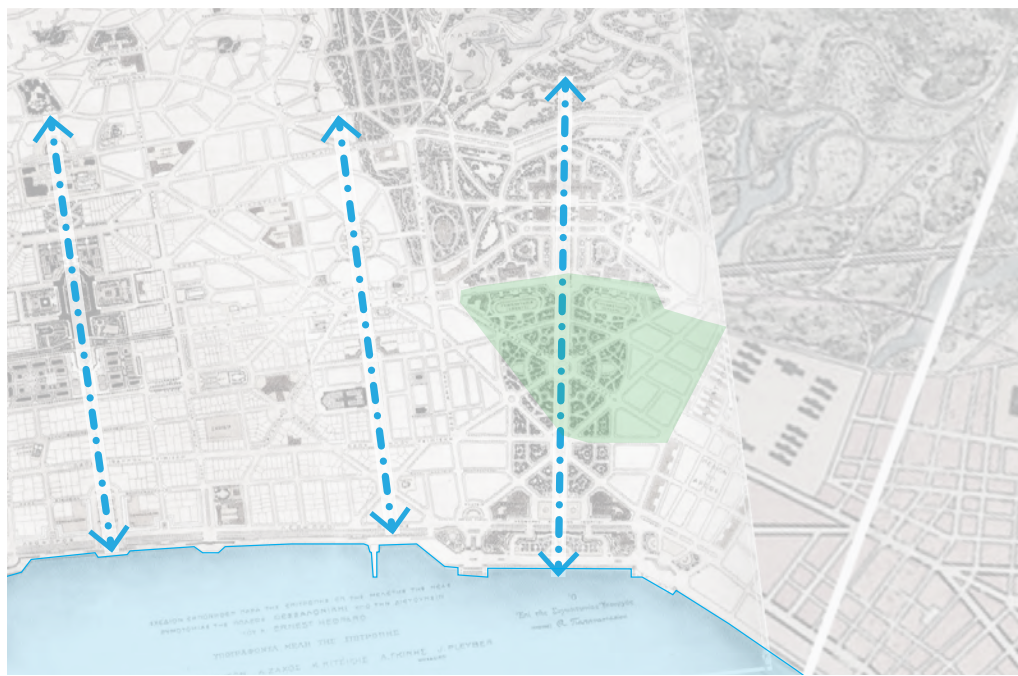




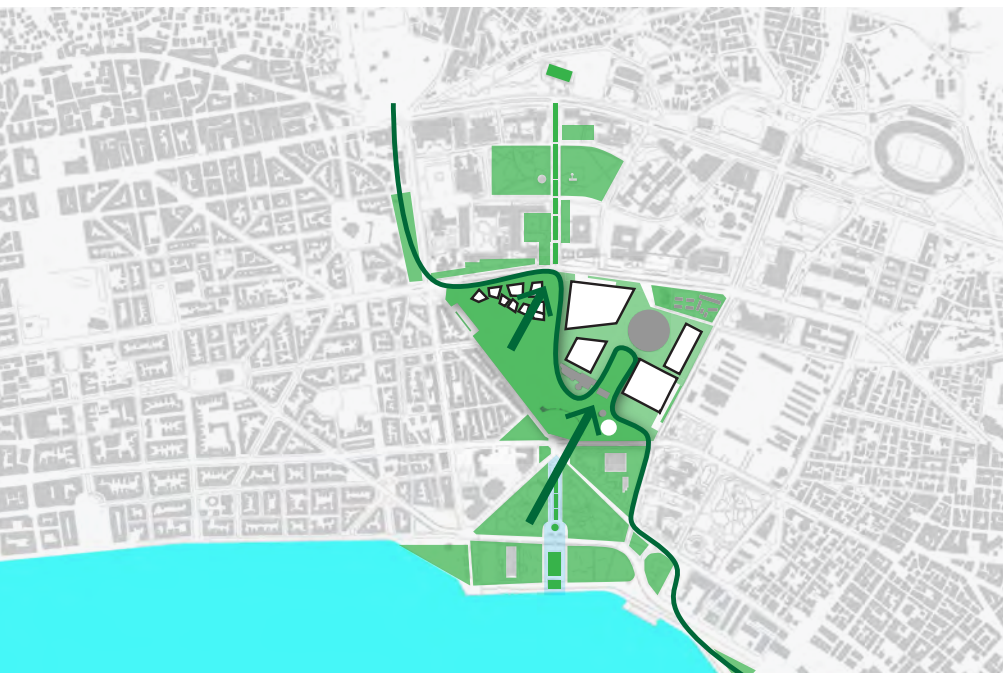
BIRD'S EYE VIEW FROM THE SOUTH-WEST



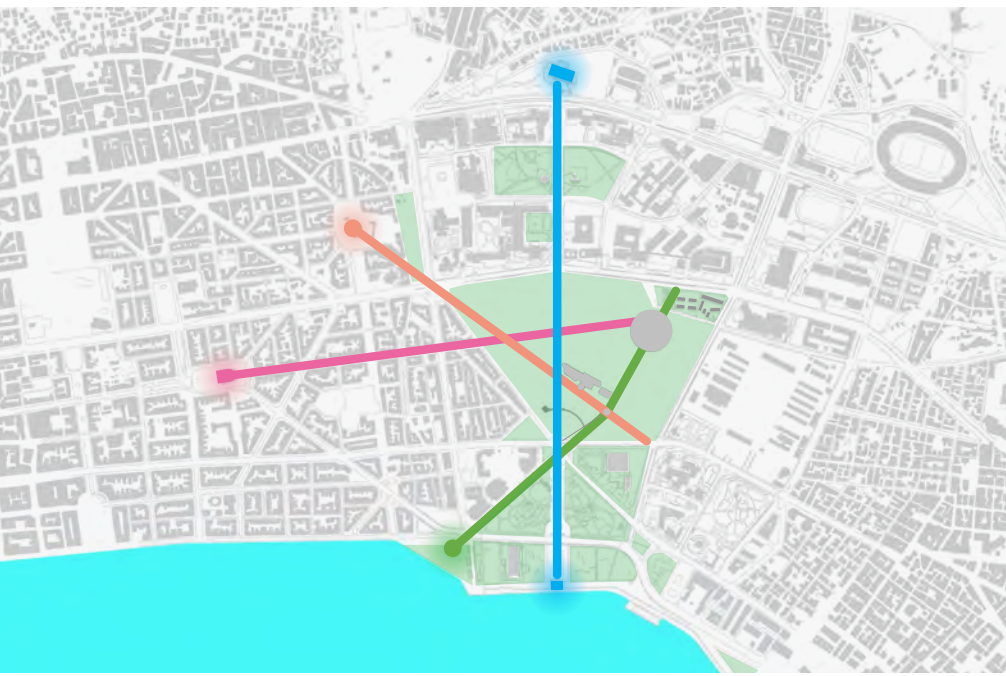
A NEW FOREST FOR THESSALONIKI
We must bring nature closer to our cities. We are creating an urban forest, a new park for Thessaloniki, where people can meet, gather and play. This new green link between mountains, city and sea will bring character, clean air and clarity to a place that today is mineral.



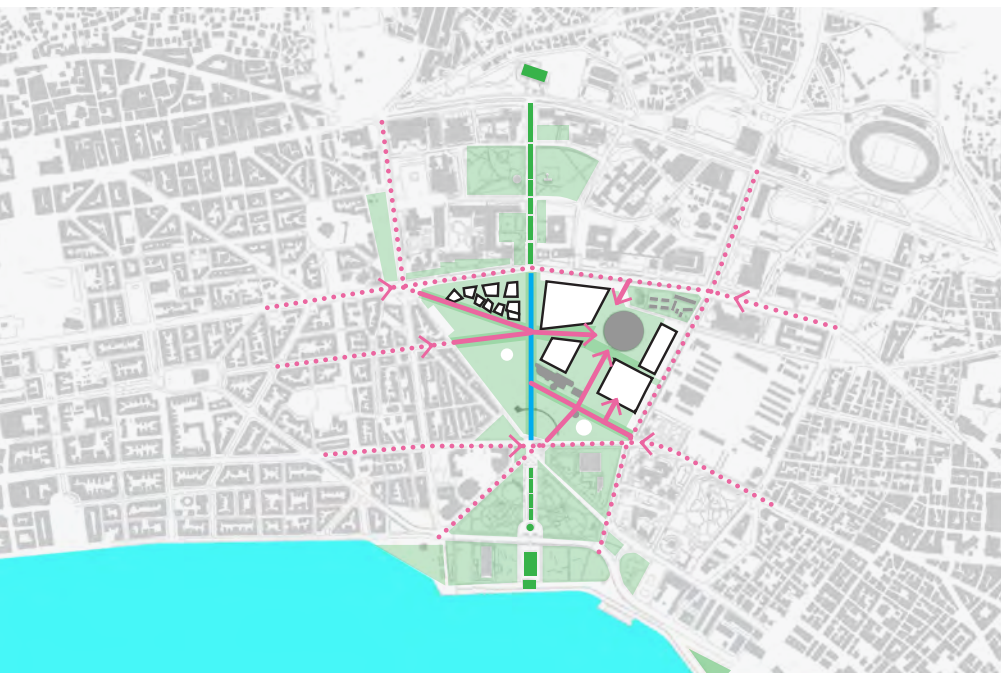
LINKING CITY AND SEA
In the celebration of Thessaloniki's long history as a centre of trade, we are reinstating a historical visual axis between city, sea and mountains. We use water to create a less formal, more naturalistic connection that mimics the water's journey from spring to shore.



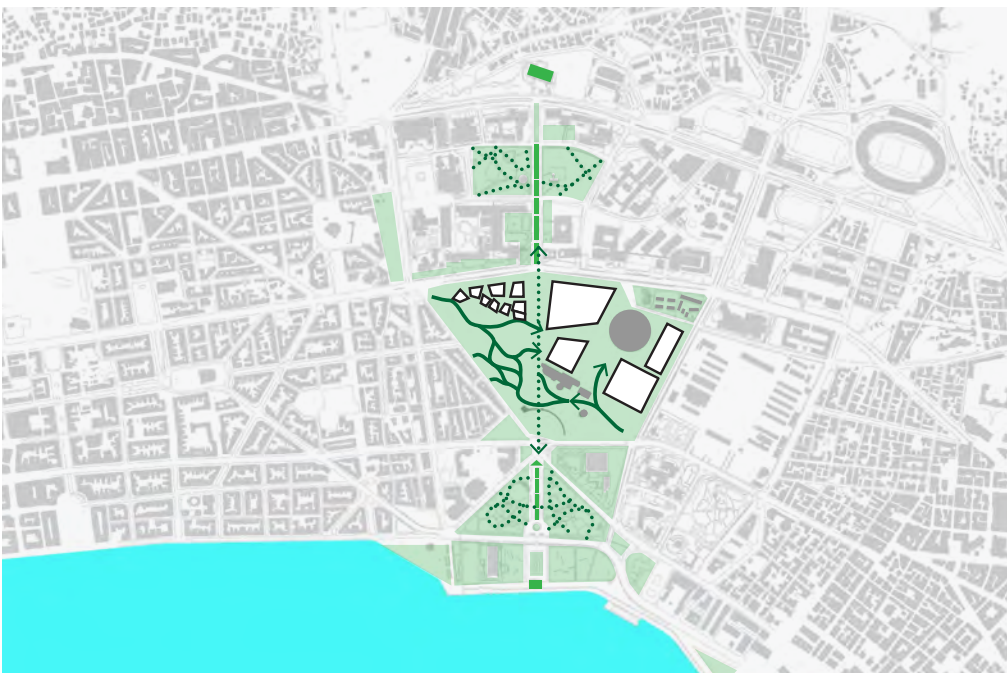
MAXIMISING GREEN SPACE
To maximise the potential for the new park, extending its reach between buildings, we have reduced the footprint of the built elements. By placing logistics and a portion of the public program below ground we liberate the ground plane for further landscaping opportunities.



STITCHING TOGETHER THE URBAN FABRIC
The transformation of the Confex Park will extend beyond its boundaries. We will create meaningful connections to the surrounding city and neighbourhoods throughout, expanding visual corridors and ensuring seamless integration with the urban fabric.



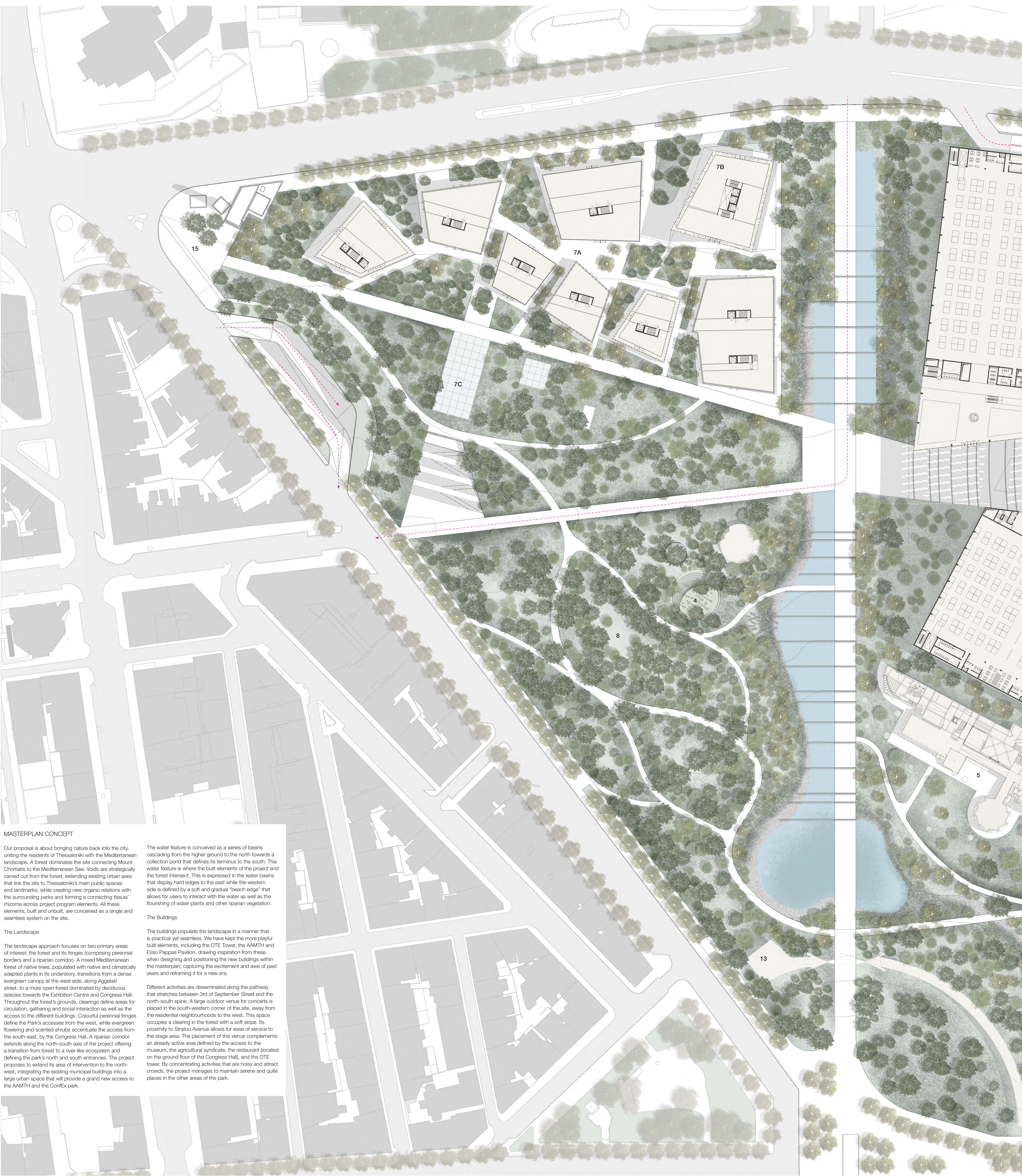
CLEAR AND INTUITIVE ARRIVALS
The building's massing and positioning are designed to maximise visual connections to key landmarks, drawing visitors in from afar and establishing clear routes to each space upon arrival. Legible paths make navigation of the park intuitive, comfortable and efficient.



NATURE TRAILS THROUGH THE CITY
The Park is not only a space for commerce, but a destination in itself; nature trails throughout deepen the connection between city and nature, drawing flora and fauna down from the mountains, and connecting the Park and sea with the Byzantine Walls.



SITE PLAN - SCALE 1:1500



MASTERPLAN CONCEPT

Our proposal is about bringing nature back into the city, uniting the residents of Thessaloniki with the Mediterranean landscape. A forest dominates the site connecting Mount Chortiatis to the Mediterranean Sea. Voids are strategically carved out from the forest, extending existing urban axes that link the site to Thessaloniki's main public spaces and landmarks, while creating new organic relations with the surrounding parks and forming a connecting tissue/ rhizome across project program elements. All these elements, built and unbuilt, are conceived as a single and seamless system on the site.

The Landscape

The landscape approach focuses on two primary areas of interest: the forest and its fringes (comprising perennial borders and a riparian corridor). A mixed Mediterranean forest of native trees, populated with native and climatically adapted plants in its understory, transitions from a dense evergreen canopy at the west side, along Aggelaki street, to a more open forest dominated by deciduous species towards the Exhibition Centre and Congress Hall. Throughout the forest's grounds, clearings define areas for circulation, gathering and social interaction as well as the access to the different buildings. Colourful perennial fringes define the Park's accesses from the west, while evergreen flowering and scented shrubs accentuate the access from the south-east, by the Congress Hall. A riparian corridor extends along the north-south axis of the project offering a transition from forest to a river-like ecosystem and defining the park's north and south entrances. The project proposes to extend its area of intervention to the north-west, integrating the existing municipal buildings into a large urban space that will provide a grand new access to the AAMTH and the ConfEx park.

The water feature is conceived as a series of basins cascading from the higher ground to the north towards a collection pond that defines its terminus to the south. This water feature is where the built elements of the project and the forest intersect. This is expressed in the water basins that display hard edges to the east while the western side is defined by a soft and gradual "beach edge" that allows for users to interact with the water as well as the flourishing of water plants and other riparian vegetation.

The Buildings

The buildings populate the landscape in a manner that is practical yet seamless. We have kept the more playful built elements, including the OTE Tower, the AAMTH and Esso Pappas Pavilion, drawing inspiration from these when designing and positioning the new buildings within the masterplan; capturing the excitement and awe of past years and reframing it for a new era.

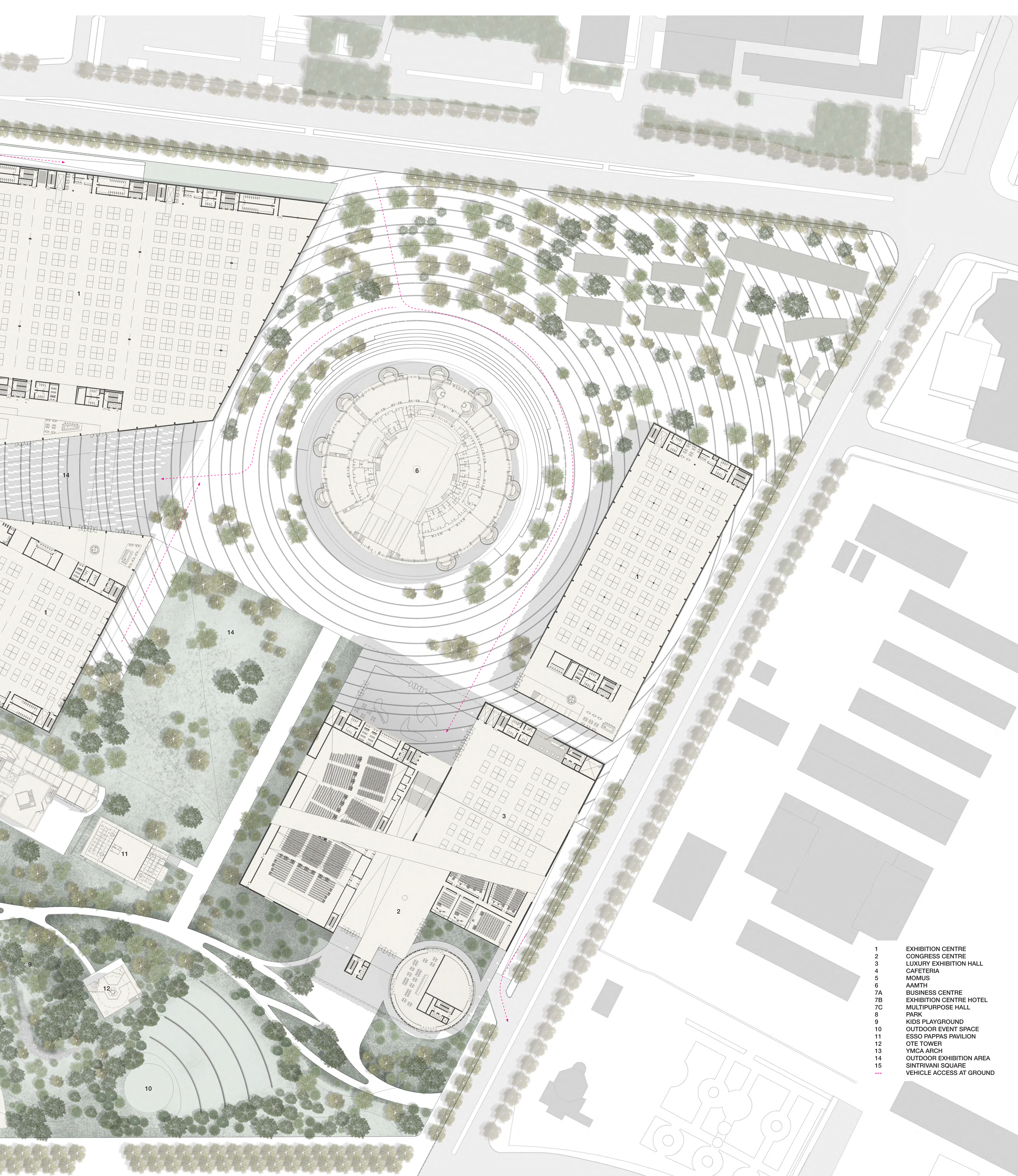
Different activities are disseminated along the pathway that stretches between 3rd of September Street and the north-south spine. A large outdoor venue for concerts is placed in the south-western corner of the site, away from the residential neighbourhoods to the west. This space occupies a clearing in the forest with a soft slope. Its proximity to Stratou Avenue allows for ease of service to the stage area. The placement of this venue complements an already active area defined by the access to the museum, the agricultural syndicate, the restaurant (located on the ground floor of the Congress Hall), and the OTE tower. By concentrating activities that are noisy and attract crowds, the project manages to maintain serene and quite places in the other areas of the park.



ARRIVAL TO THE CONGRESS CENTRE



OUTDOOR EVENTS SPACE SIGNALLED BY THE OTE TOWER



- 1 EXHIBITION CENTRE
- 2 CONGRESS CENTRE
- 3 LUXURY EXHIBITION HALL
- 4 CAFETERIA
- 5 MOMUS
- 6 AAMTH
- 7A BUSINESS CENTRE
- 7B EXHIBITION CENTRE HOTEL
- 7C MULTIPURPOSE HALL
- 8 PARK
- 9 KIDS PLAYGROUND
- 10 OUTDOOR EVENT SPACE
- 11 ESSO PAPPAS PAVILION
- 12 OTE TOWER
- 13 YMCA ARCH
- 14 OUTDOOR EXHIBITION AREA
- 15 SINTRIVANI SQUARE
- VEHICLE ACCESS AT GROUND



AXIS PROMENADE FROM THE OTE TOWER TO THE AAMHT



ARRIVING AT THE AAMHT FROM THE CITY



ANCIENT CITY AXIS REVIVED BY WATER



The forest is the connecting tissue linking the surrounding mountains to the sea, the project to the city, and the different project components within the site. It is a forest mesh that is multifunctional, providing an ecosystem of services and benefits. These benefits include the creation of places for recreation and contemplation, shaded areas protected from the Mediterranean sun that cool the site and its surroundings and which in turn reduce urban heating. Other important benefits are the increase in soil (pervious) surfaces and the provision of habitats for animal and plant species. The forest contributes to the wellbeing of site users, the city, and the region.

Water is an essential component of life that is becoming scarcer in the Mediterranean region. It is also an essential component of the landscape design. A water feature is proposed for recreation, passive climate control and sustainable/ecological management. Rain water is collected from building roofs and pathways and stored in an underground water tank for irrigation purposes. This water flows down a series of cascades planted with aquatic plants in order to be filtered and oxygenated. This feature defines the north-south axis of the project, accentuating the connection to the city and the natural landscape beyond.

Connectivity is essential for people's mobility, ecological viability, and urban integration. Through the extension and engagement with existing vistas and axes, formal linear pathways define the connection to the park's immediate context, while meandering pathways connect the different program activities across the forest landscape.

Habitats are a refuge for people, flora, and fauna. The proposed mix of habitats (forest, riparian corridor, and perennial fringes) compose a unique Mediterranean landscape, defined exclusively by native plants, that ensures the resilience and health of these ecological systems by promoting species diversity, water flow, and soil regeneration.



SECTION THROUGH THE WATER FEATURE
SCALE 1:250



SECTION THROUGH THE CHILDRENS' PLAYGROUND
SCALE 1:250



SECTION THROUGH THE EVENT SPACE
SCALE 1:500



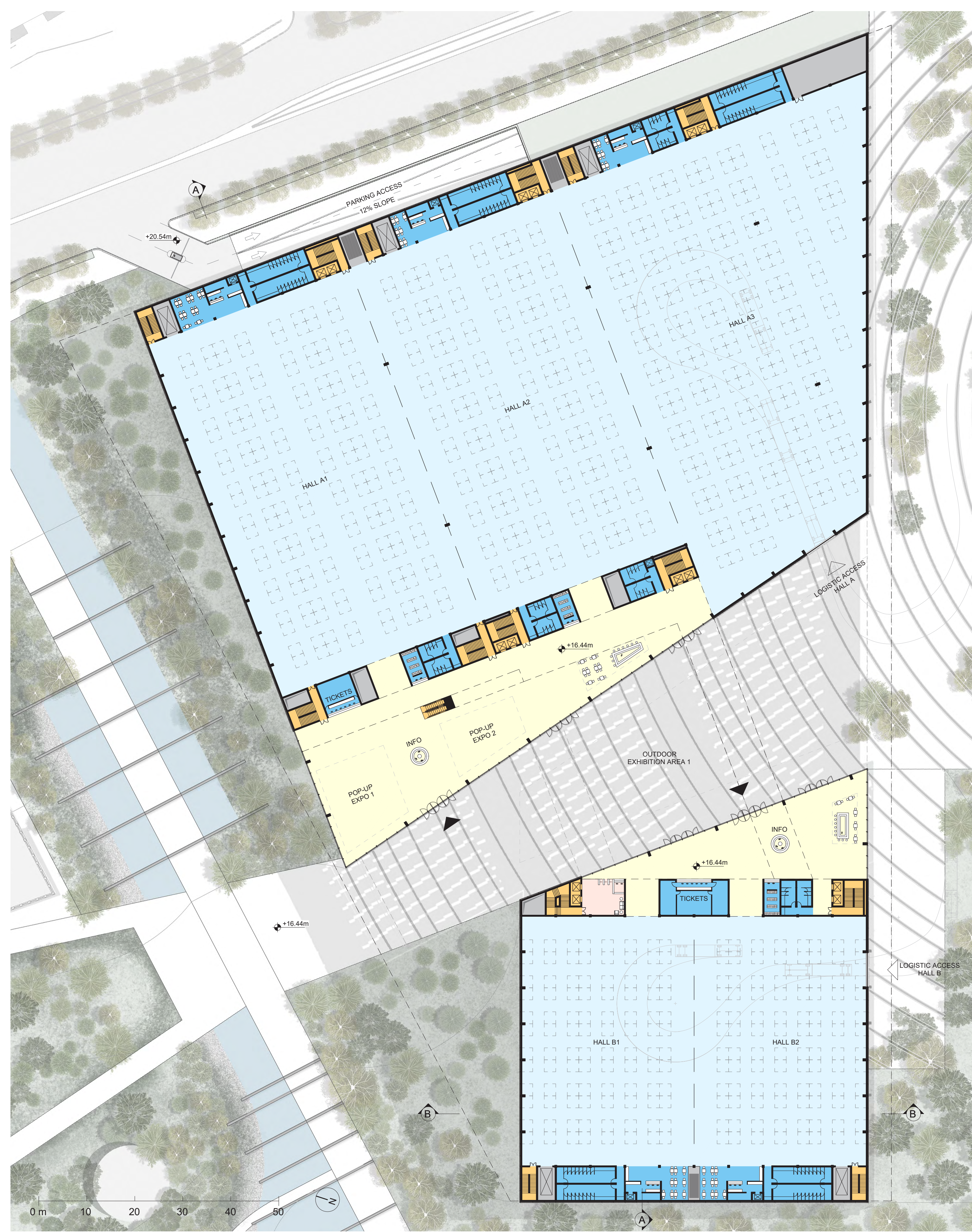
THE FOREST



PROMENADE ALONGSIDE THE BUSINESS CENTRE



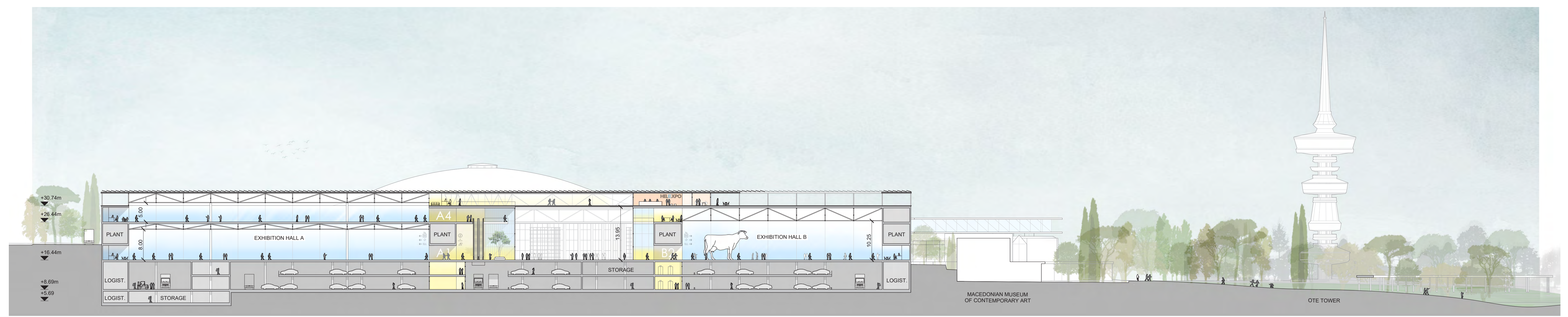
THE EXHIBITION CENTRE MAIN ARRIVAL



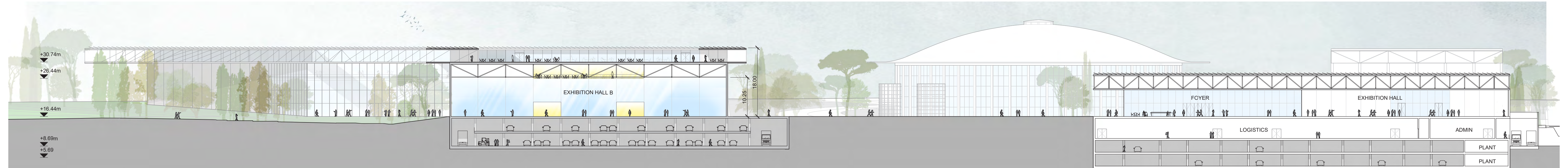
EXHIBITION CENTRE - GROUND FLOOR PLAN - SCALE 1:500



EXHIBITION CENTRE - LEVEL 1 PLAN - SCALE 1:500



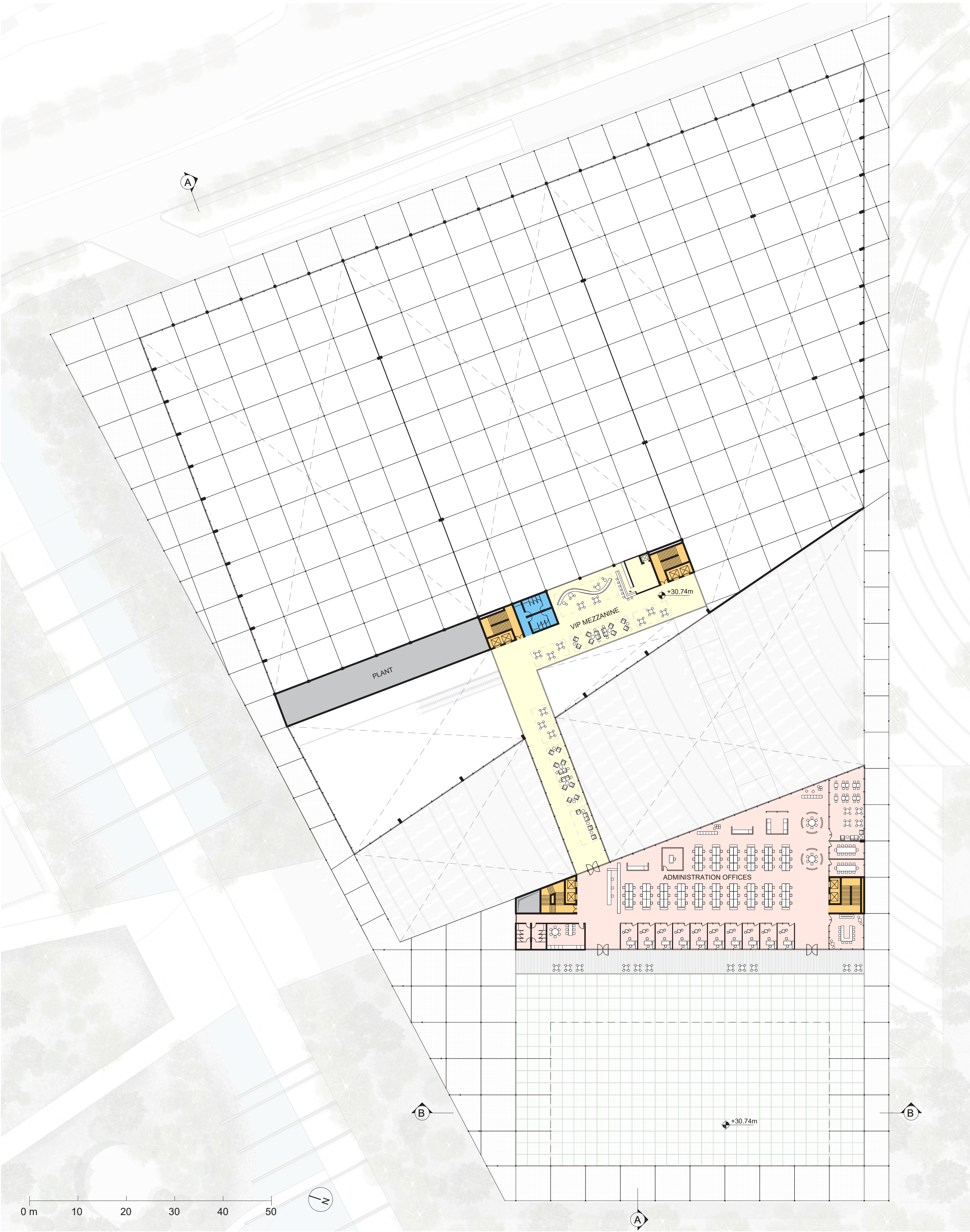
EXHIBITION CENTRE - SECTION AA - SCALE 1:500



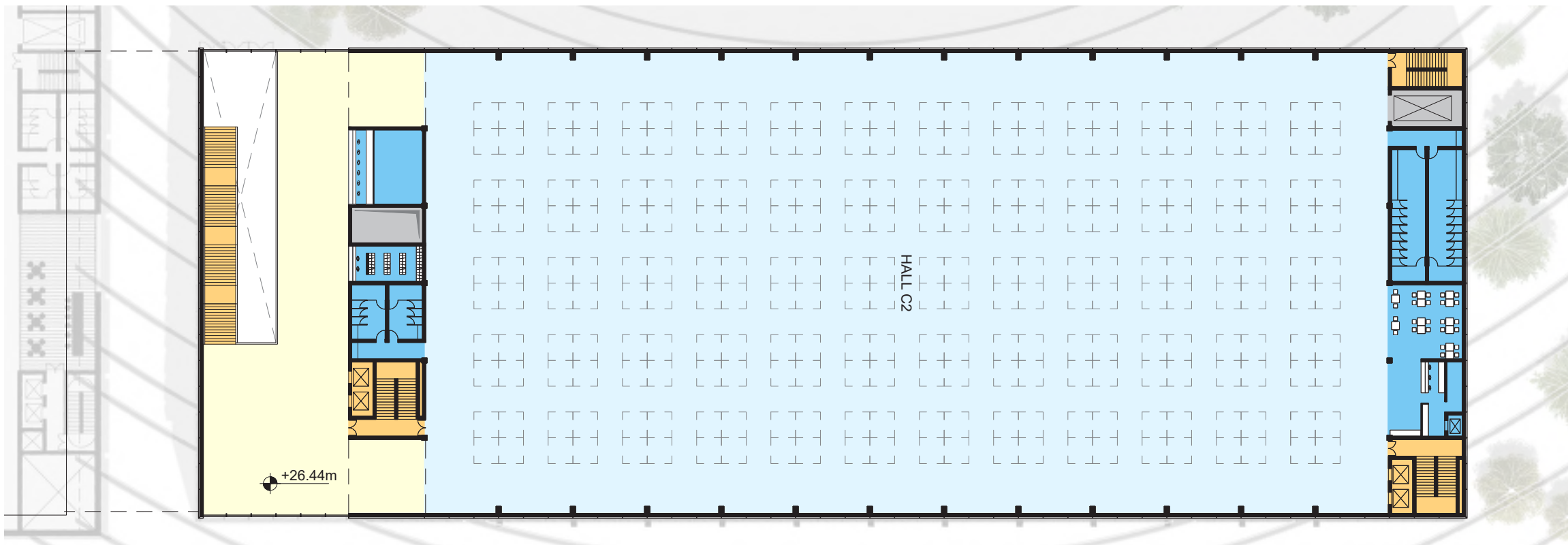
EXHIBITION CENTRE - SECTION BB - SCALE 1:500



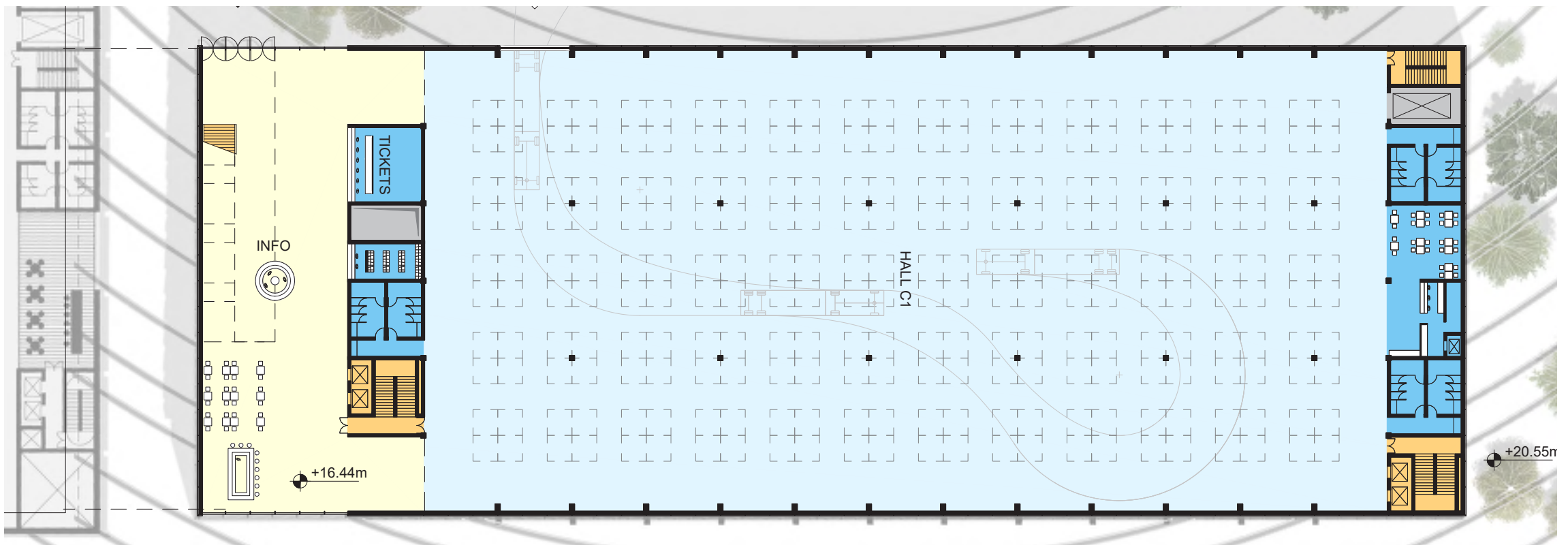
OUTDOOR EXHIBITION AREA BETWEEN EXHIBITION CENTRE AND AAMTH



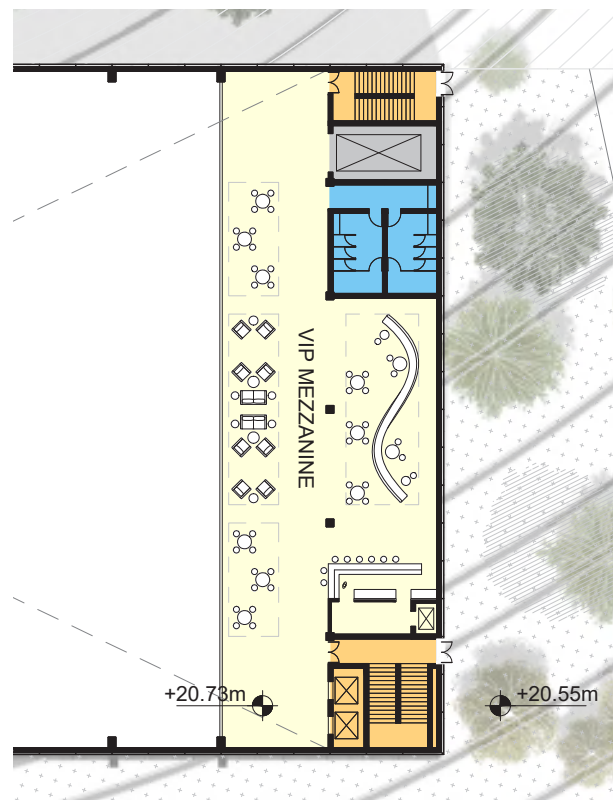
EXHIBITION CENTRE - BRIDGE LEVEL PLAN - SCALE 1:500



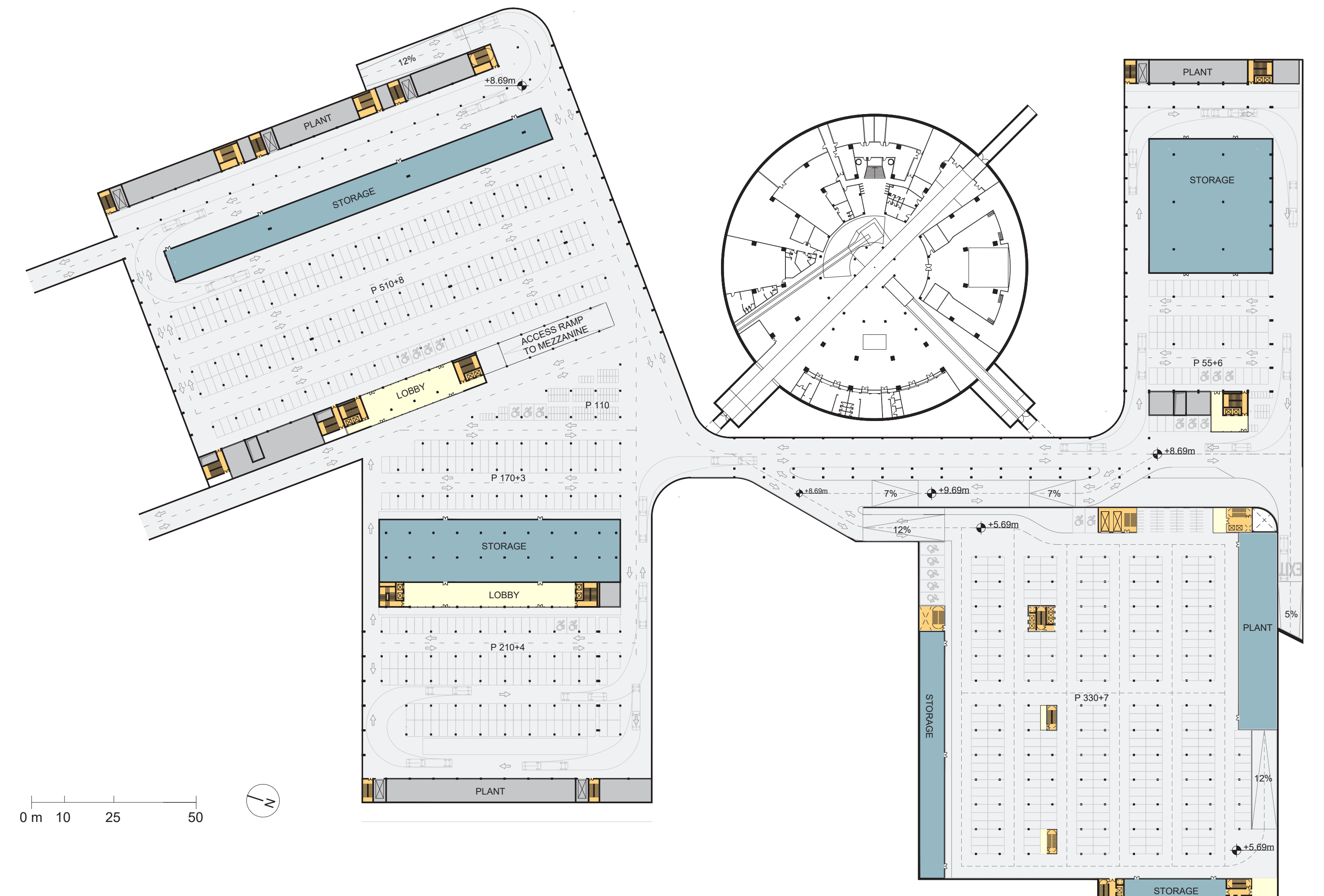
EXHIBITION CENTRE - LEVEL 1 PLAN - SCALE 1:500



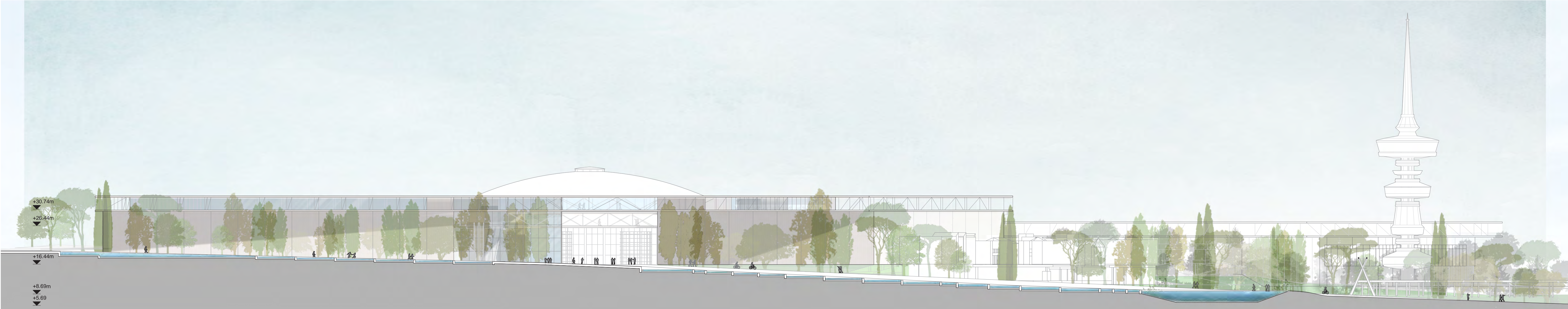
EXHIBITION CENTRE - GROUND FLOOR PLAN - SCALE 1:500



MEZZANINE PLAN - SCALE 1:500



EXHIBITION CENTRE - BASEMENT PLAN - SCALE 1:1000



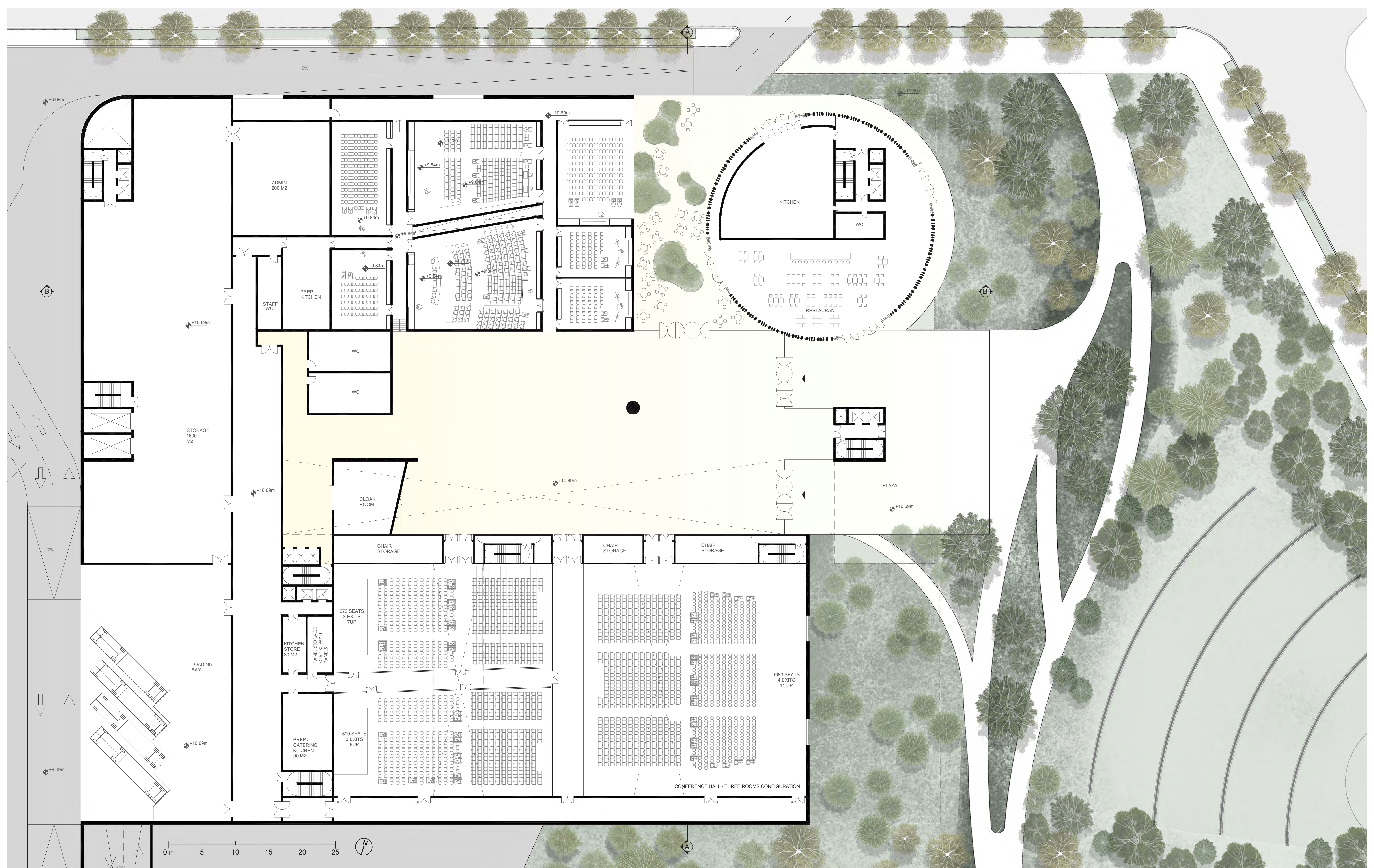
EXHIBITION CENTRE - NORTH FACADE - SCALE 1:500



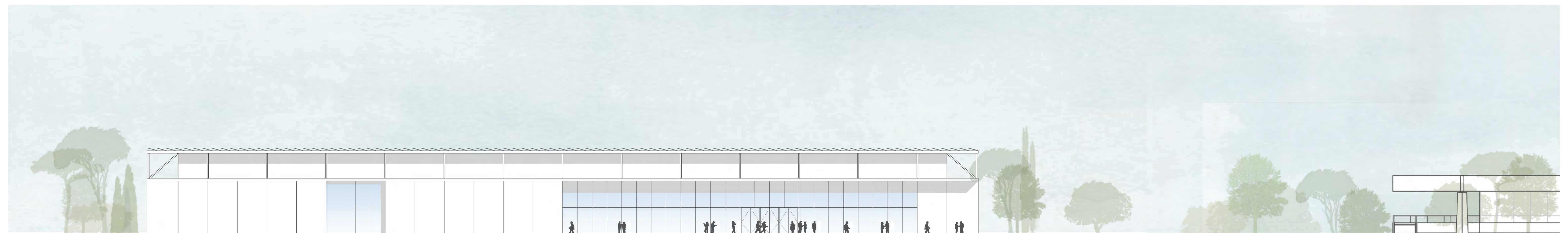
EXHIBITION CENTRE - WEST FACADE - SCALE 1:500



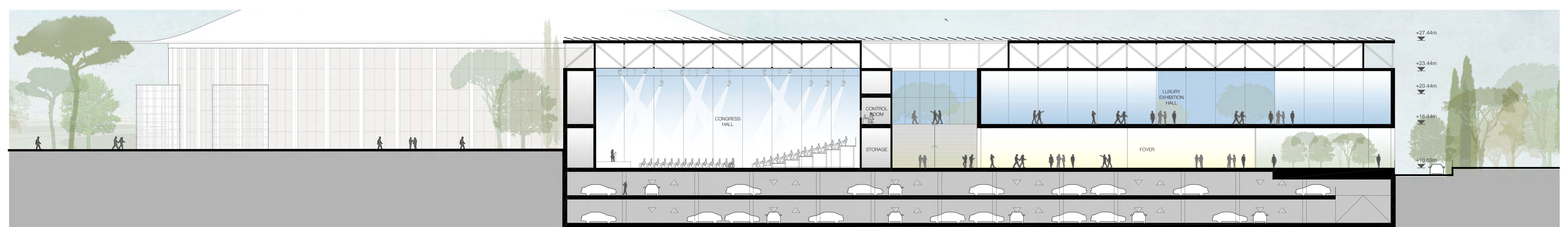
APPROACHING THE CONGRESS CENTRE



CONGRESS CENTRE - LOWER GROUND FLOOR PLAN - SCALE 1:250



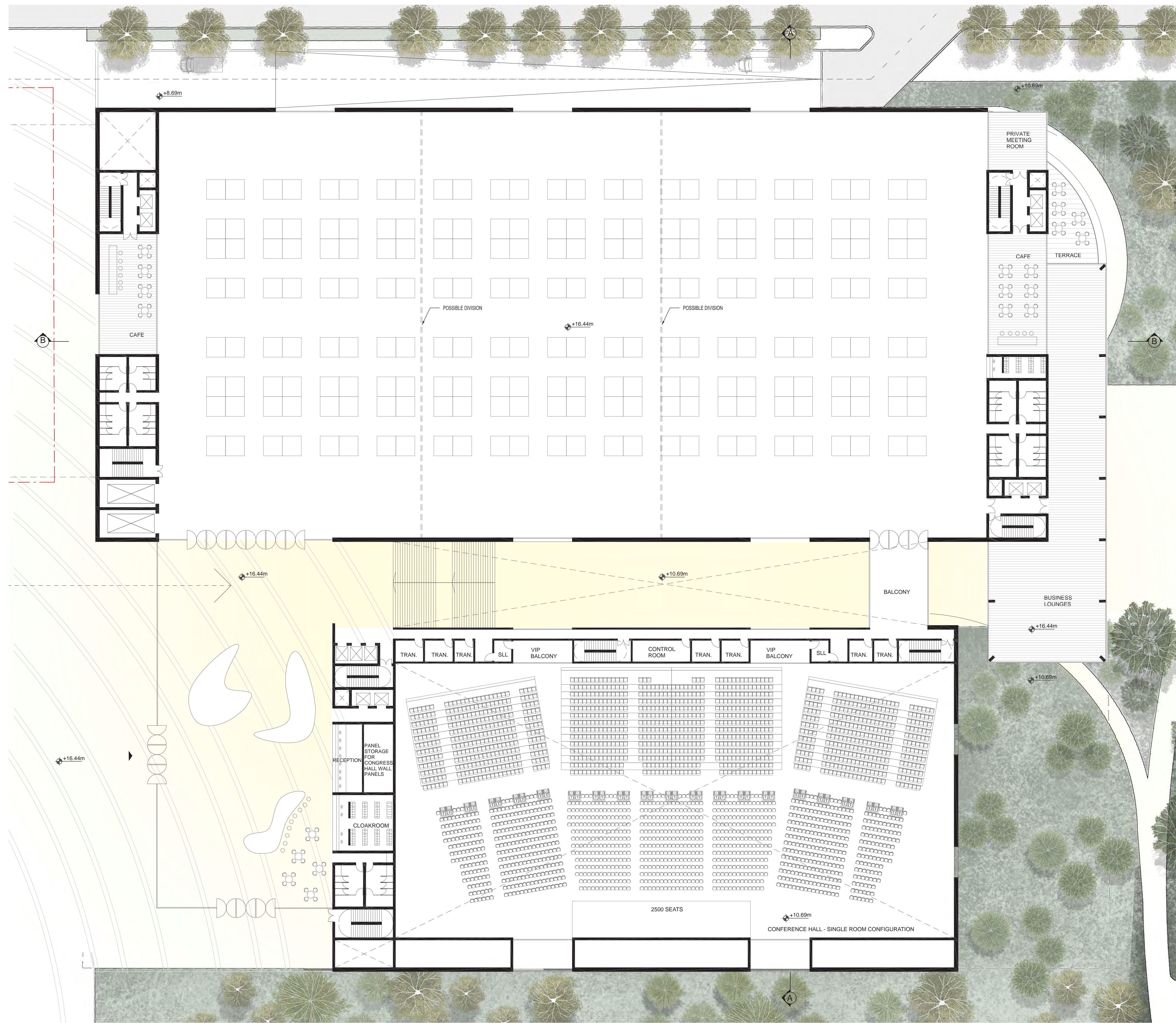
CONGRESS CENTRE - WEST ELEVATION - SCALE 1:250



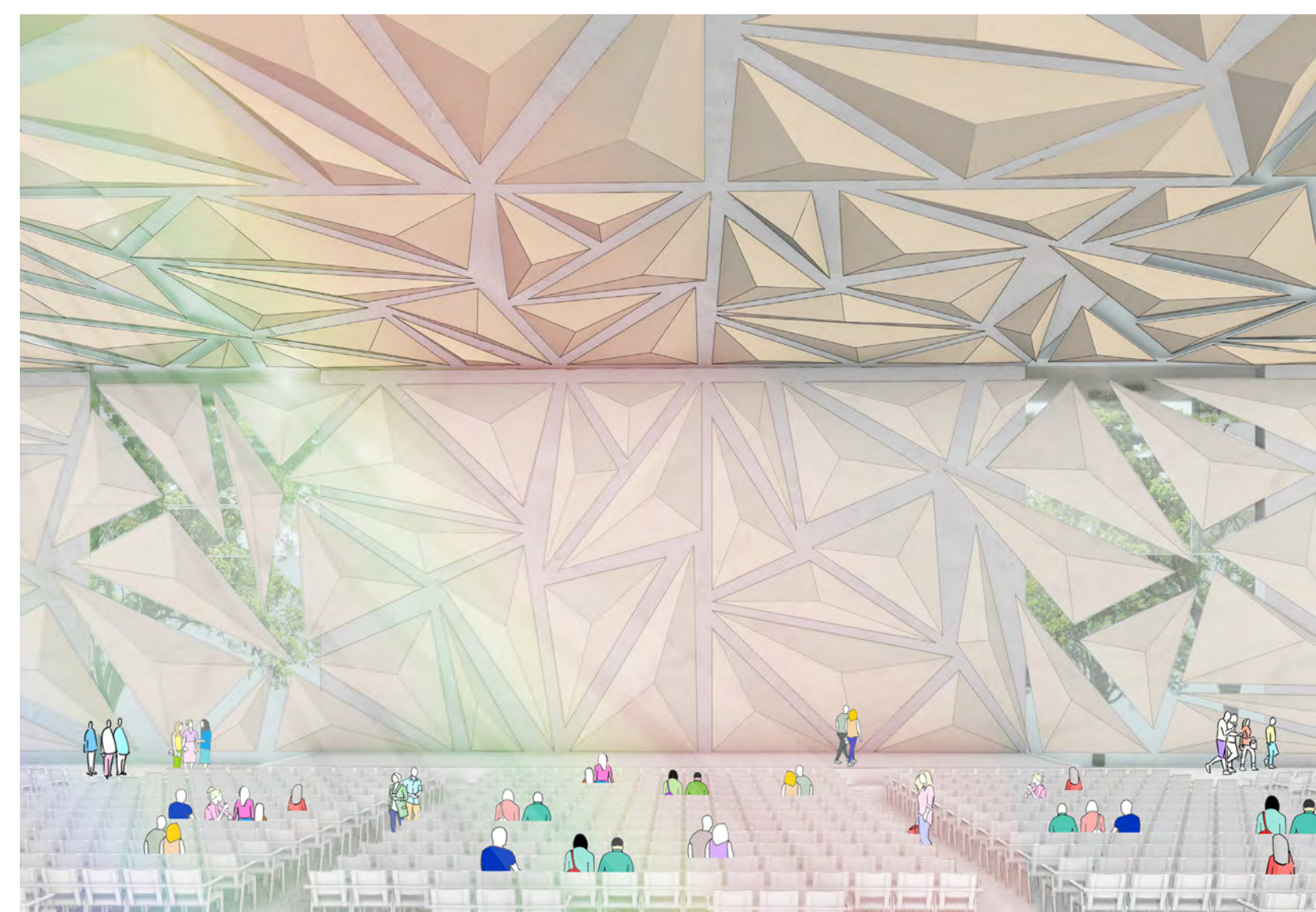
CONGRESS CENTRE - SECTION AA - SCALE 1:250



THE MAIN CONGRESS HALL



CONGRESS CENTRE - UPPER GROUND FLOOR PLAN - SCALE 1:250



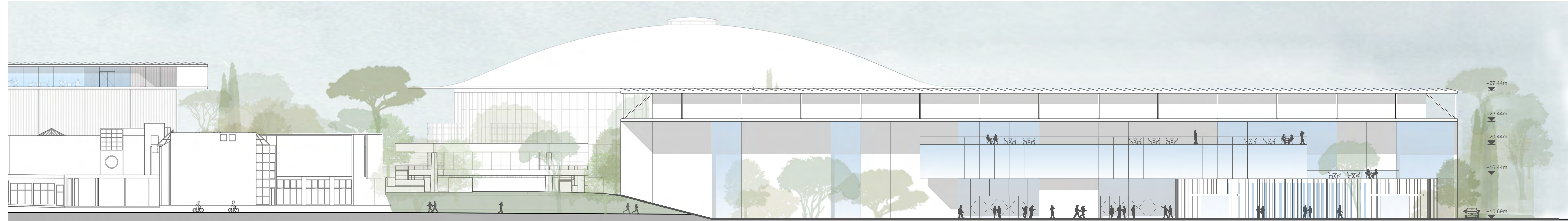
CONGRESS HALL



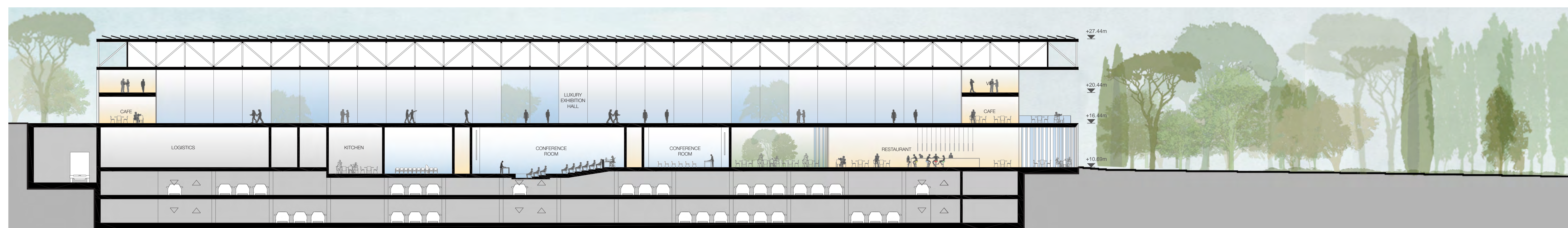
CONGRESS CENTRE - FOYER



CONGRESS CENTRE - EAST ENTRANCE



CONGRESS CENTRE - EAST ELEVATION - SCALE 1:250



CONGRESS CENTRE - SECTION BB - SCALE 1:250



BUSINESS AND COMMERCIAL AREA IN THE PARK



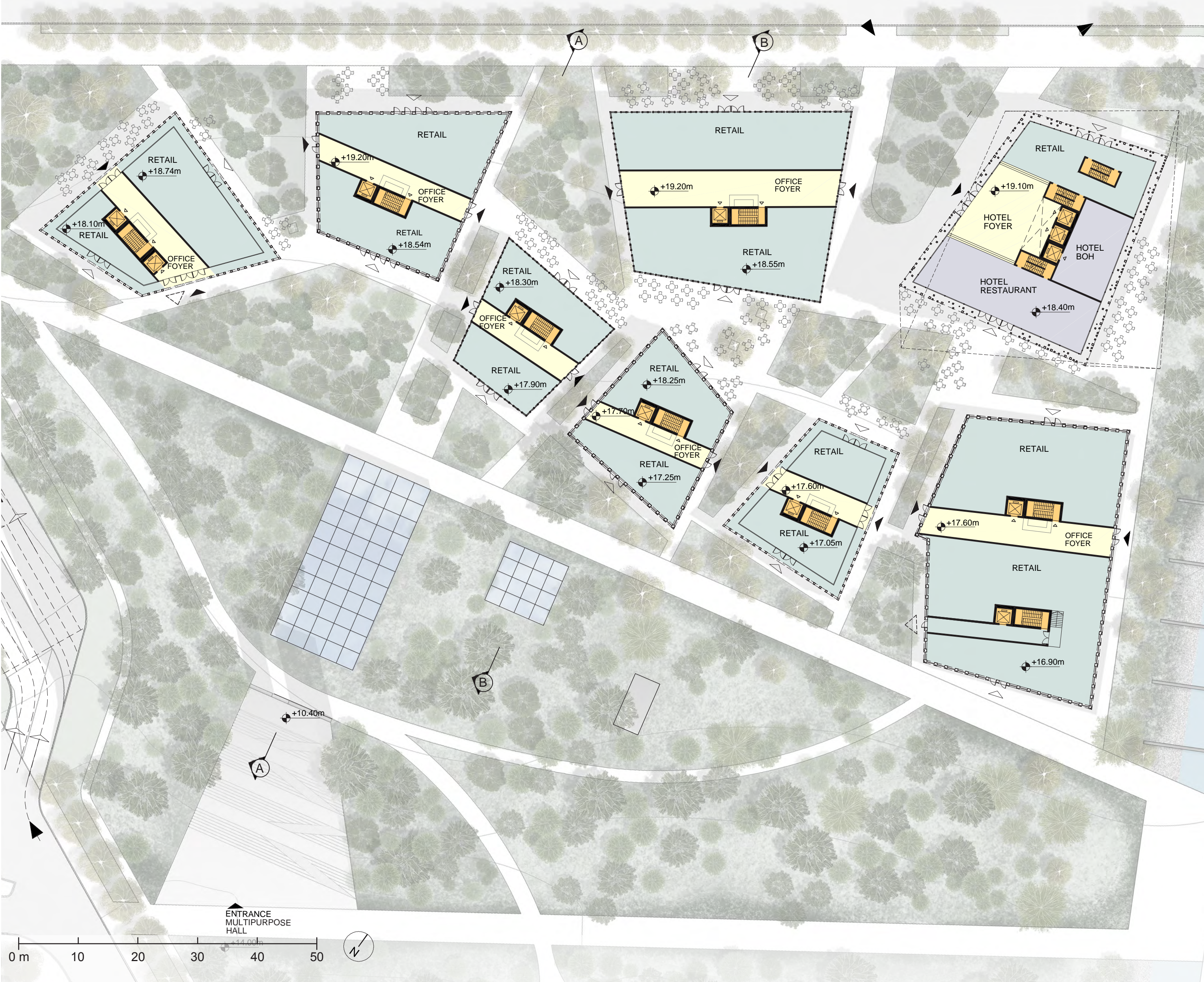
BUSINESS CENTRE - INTIMATE INBETWEEN SPACES



BUSINESS CENTRE - BRINGING THE FOREST TO EGNATIA STREET



BUSINESS CENTRE - VISUAL CORRIDOR TO THE FOREST



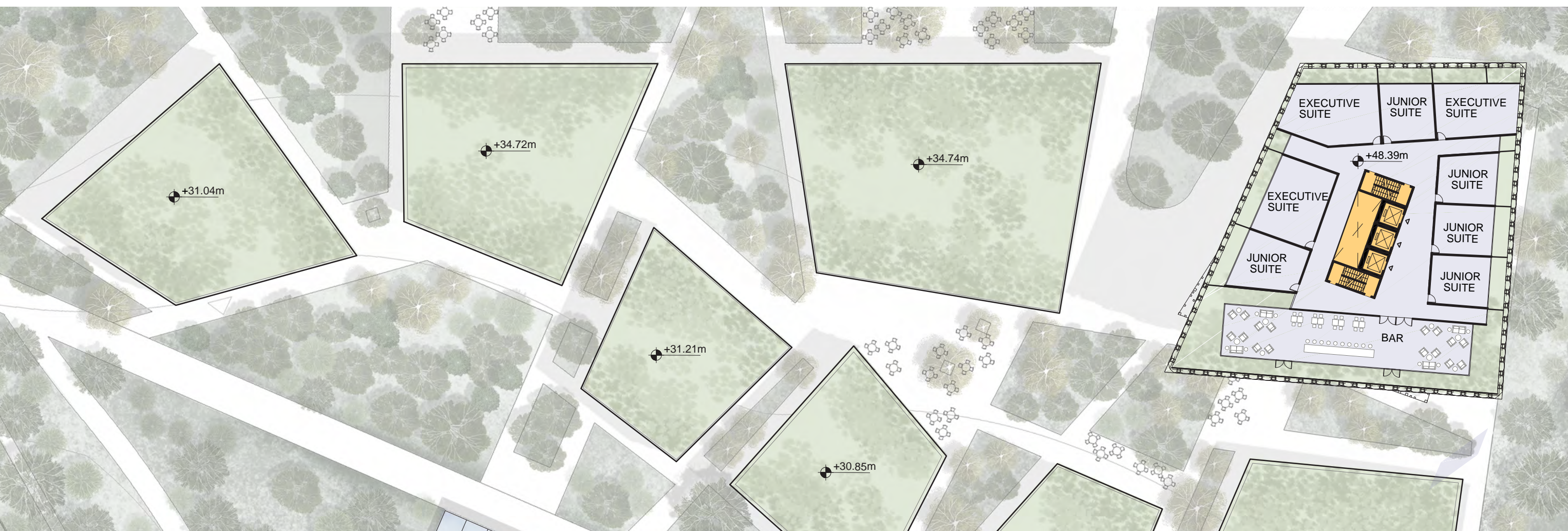
BUSINESS CENTRE - GROUND FLOOR PLAN - SCALE 1:500



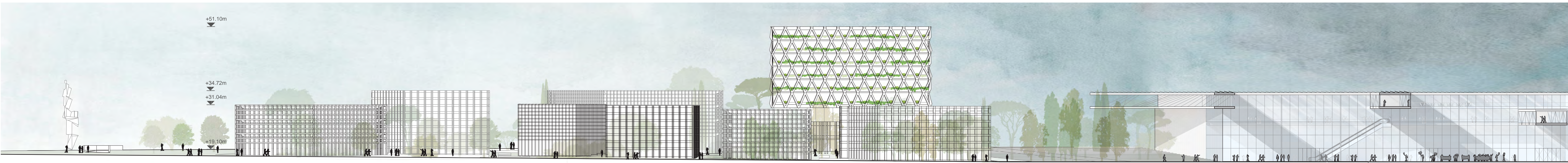
BUSINESS CENTRE - THIRD FLOOR PLAN - SCALE 1:500



BUSINESS CENTRE - BASEMENT 2 PARKING PLAN - SCALE 1:1000



BUSINESS CENTRE - ROOF PLAN - SCALE 1:500



BUSINESS CENTRE - SOUTH ELEVATION - SCALE 1:500



ARRIVING FROM SINTRIVANI SQUARE



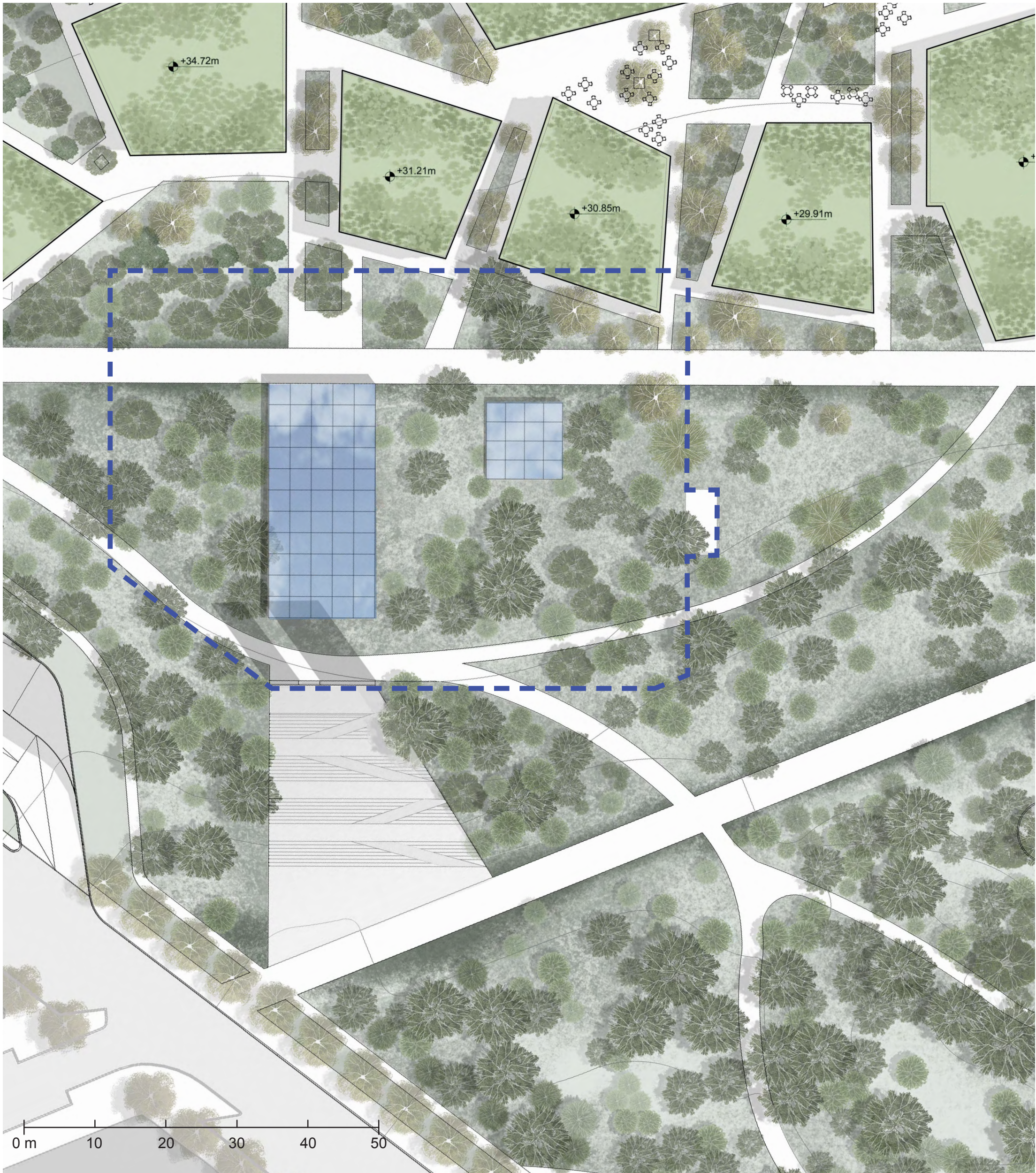
MULTIPURPOSE HALL - ENTRANCE FROM THE PARK VIEW



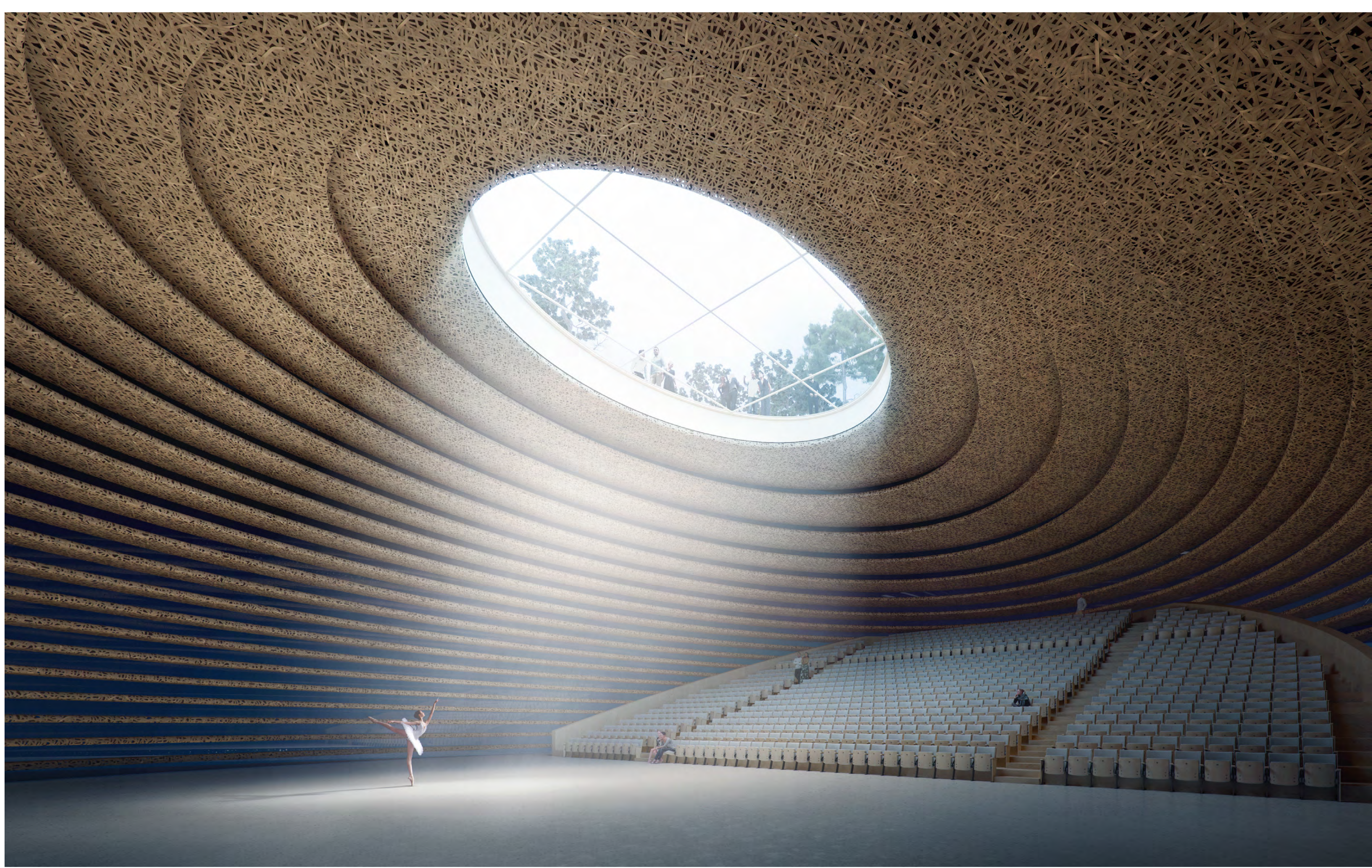
MULTIPURPOSE HALL - VIEW TOWARDS THE FOYER



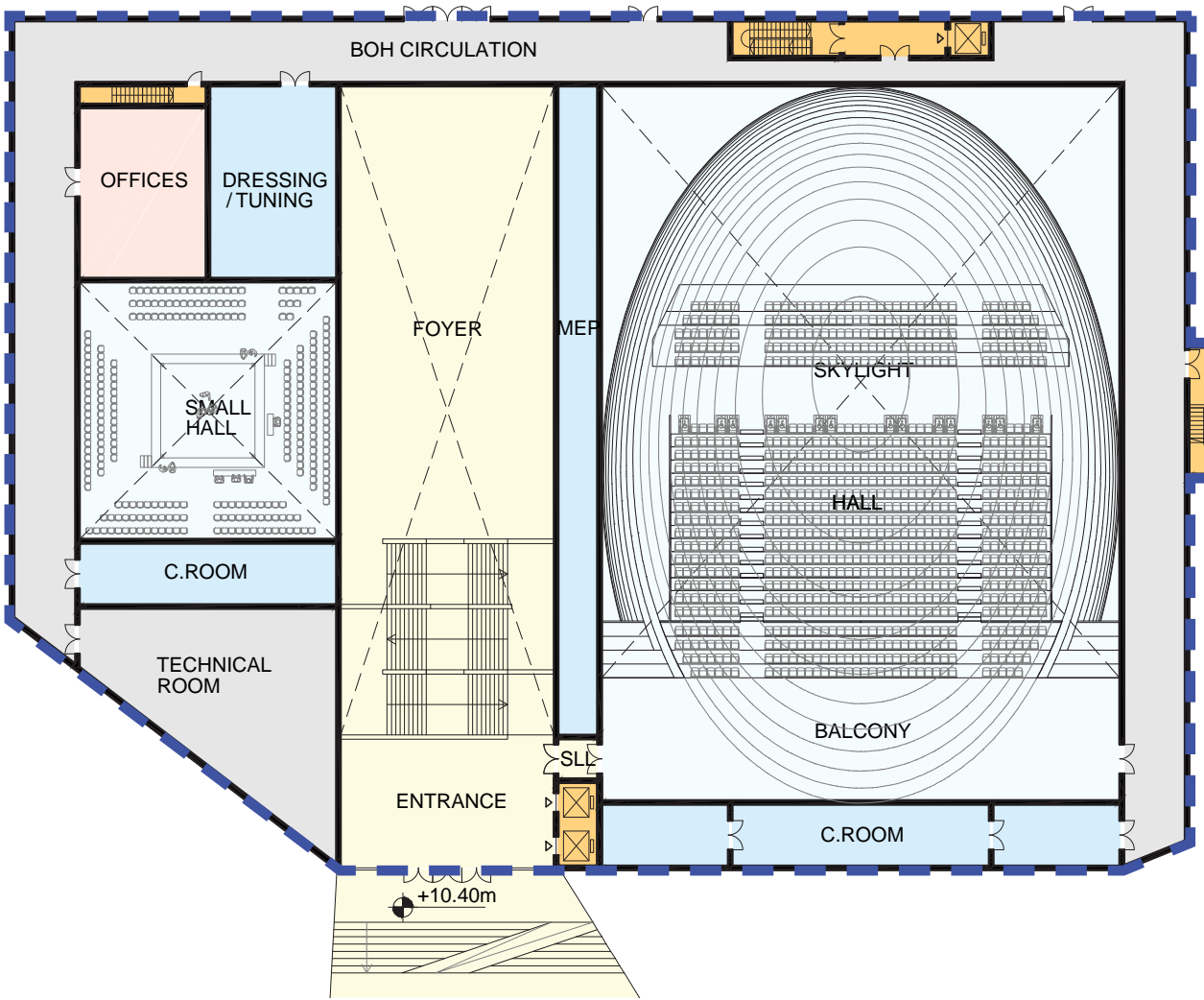
MULTIPURPOSE HALL - FOYER VIEW TOWARDS THE ENTRANCE FROM THE PARK



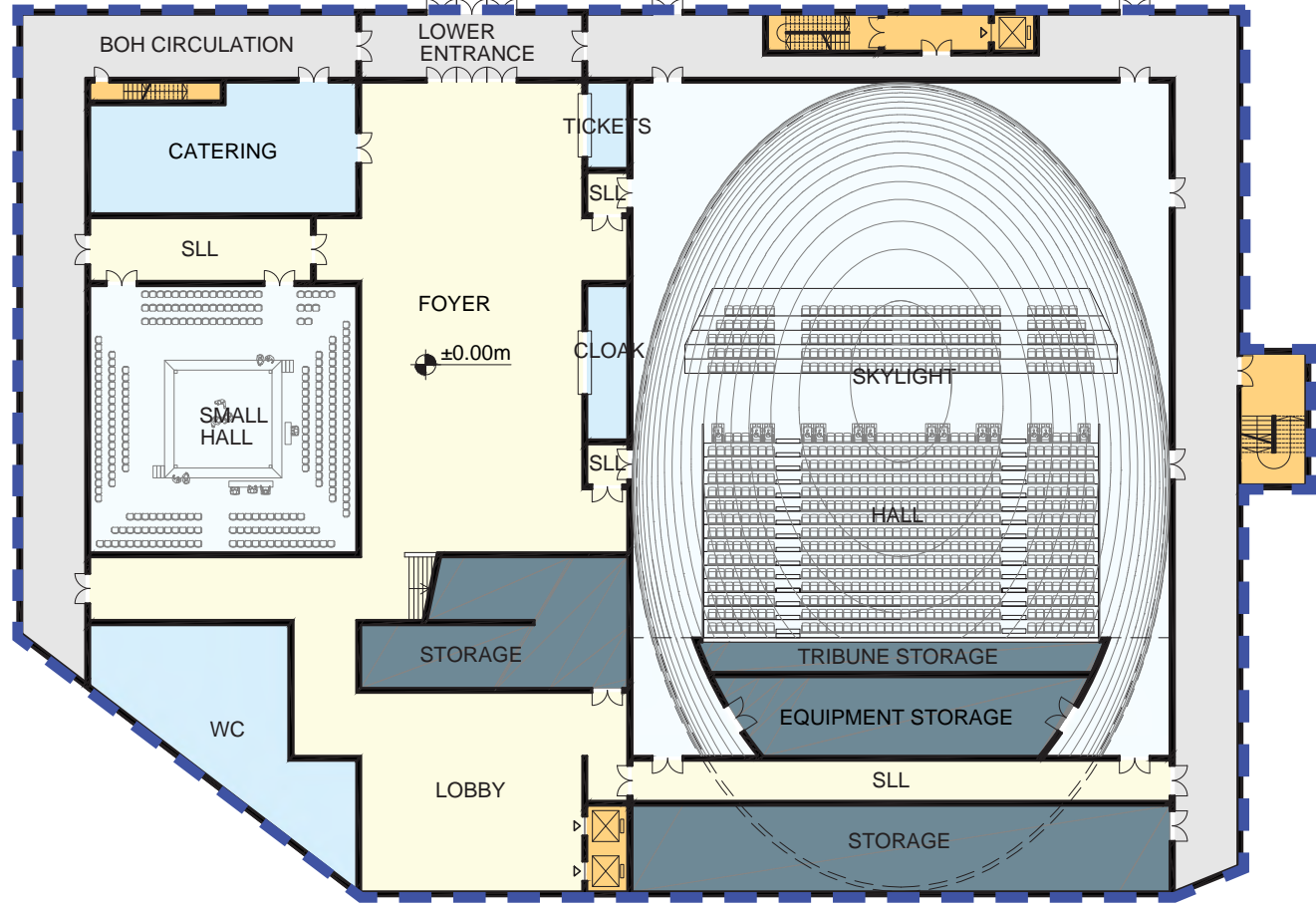
MULTIPURPOSE HALL - ENTRANCE FROM THE PARK PLAN - SCALE 1:500



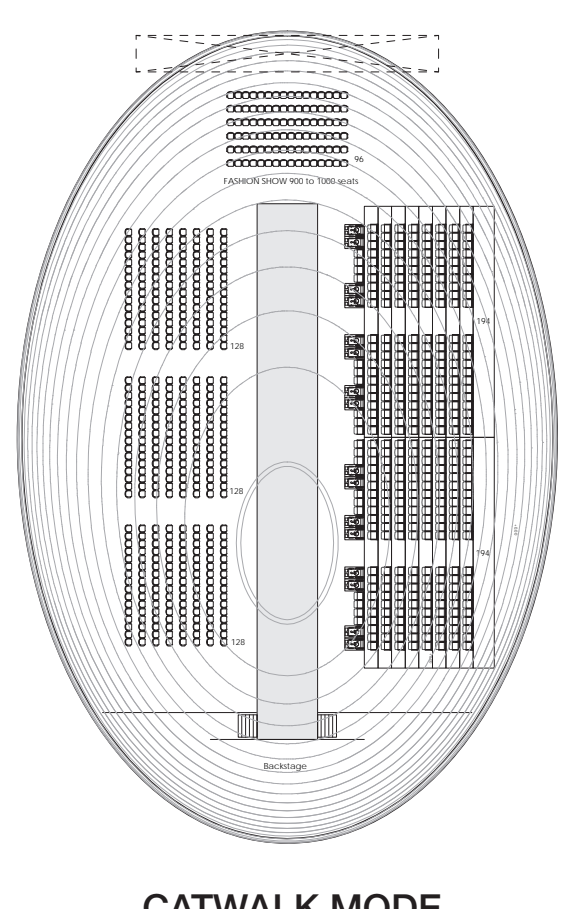
MULTIPURPOSE HALL - INTERIOR VIEW - PERFORMANCE ARTS IN DIALOGUE WITH PUBLIC SPACE



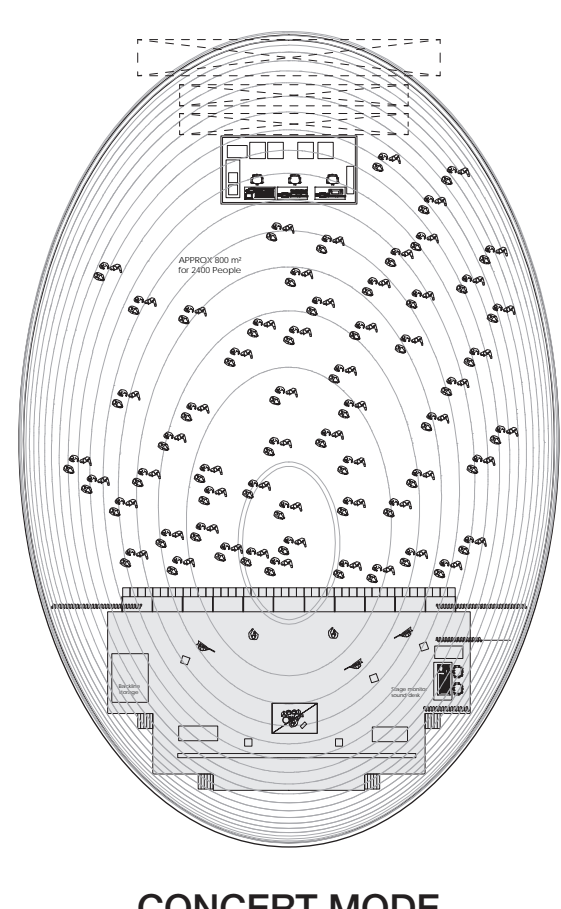
MULTIPURPOSE HALL - UPPER LEVEL PLAN - SCALE 1:500



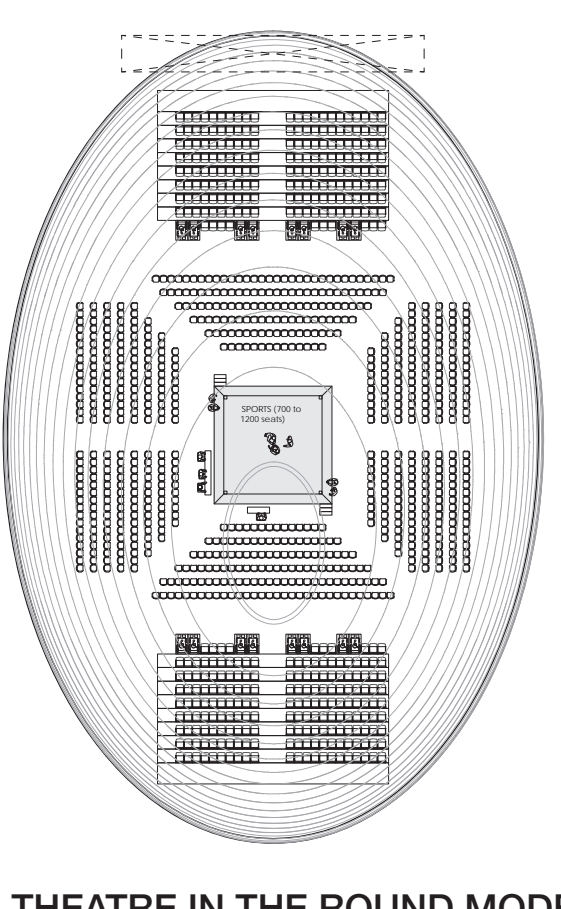
MULTIPURPOSE HALL - FOYER LEVEL PLAN, ENTRANCE FROM THE PARKING - SCALE 1:500



CATWALK MODE

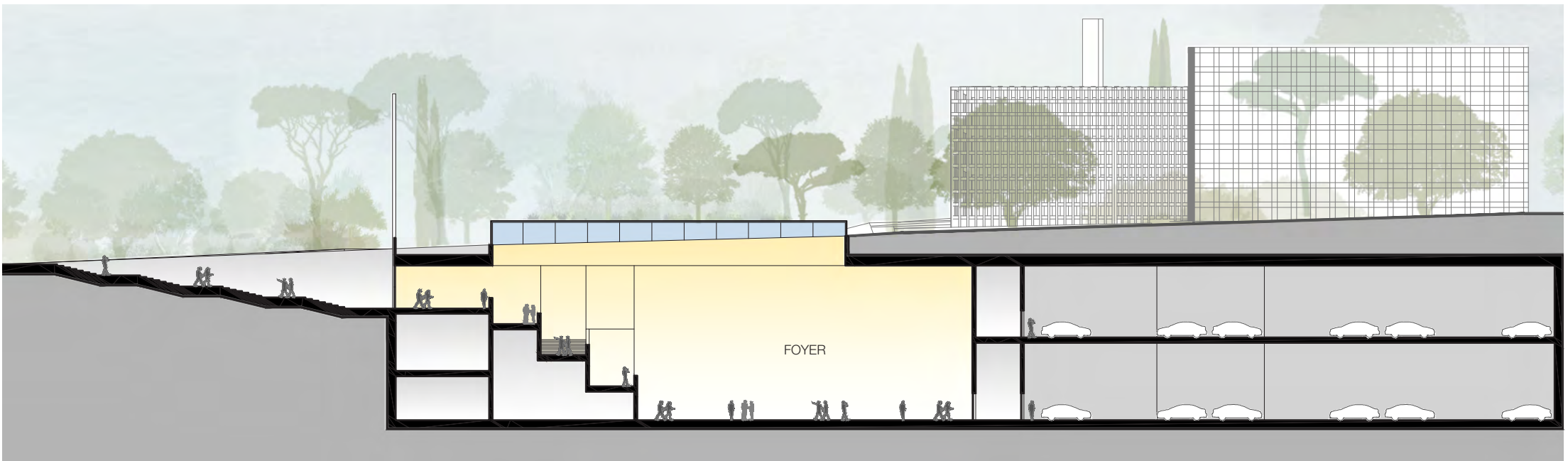


CONCERT MODE

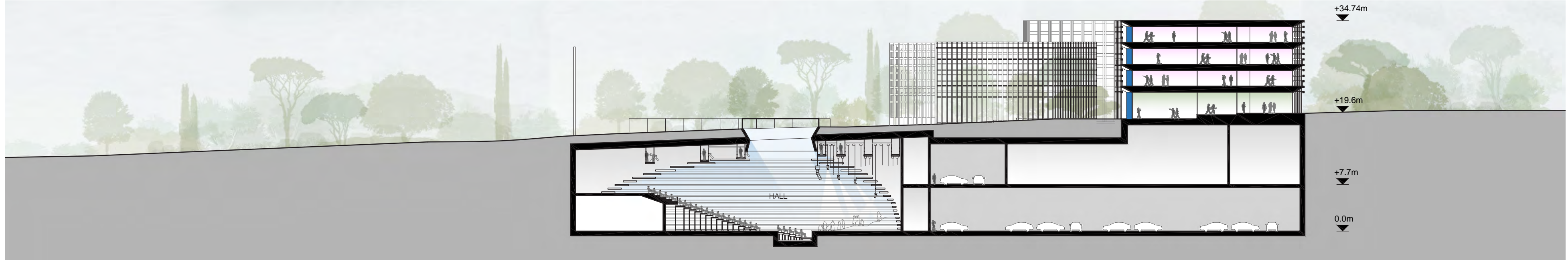


THEATRE IN THE ROUND MODE

MULTIPURPOSE HALL - DIFFERENT CONFIGURATIONS - SCALE 1:500



MULTIPURPOSE HALL & BUSINESS CENTRE - SECTION AA - SCALE 1:500



MULTIPURPOSE HALL & BUSINESS CENTRE - SECTION BB - SCALE 1:500